

Gary & Myrna Lehrer's

Quarterly Illustrated Vintage Pen Catalog

garylehrer@aol.com

Issue #82 - March 2017

See the Catalog in full color on the web site. For about a week you'll need a password for access (be sure to also see what's remaining from previous Catalogs).

WEBSITE PASSWORD FOR CATALOG #82: (www.gopens.com): FOOD

Catalog #81 Features:

- Featured: Parker; Parker Vacumatic; Parker Prototypes
- Featured: Salz Brothers "Peter Pan" Pens
- Waterman "20" & World's Smallest Safety & Eyedropper
- Over 25 Manufacturers; Salesman Sample Cases
- A Full "Point of Purchase" early Waterman 7 Tray!
- Over 265 Items

Contact Information:

- Tel: (203) 389-5295
- email: garylehrer@aol.com
- Fax: (419) 730-1479
- Call until 9:00 PM Eastern Time; Fax or email anytime
- We check our email often

Subscription Expired:

- A (1) on your mailing label means your subscription has expired. "Internet Only" renewal is \$10. "Hard Copy" Renewal is \$25 US and \$35 Foreign (see website for details). Received a sample copy? Don't forget to subscribe!

Please see inside front page for abbreviations and other important information!

Gary & Myrna Lehrer 16 Mulberry Road Woodbridge, CT 06525-1717



Here's Some Other Important Information:

GIFT CERTIFICATES: Available in any denomination. No extra cost! No expiration!

CONSIGNMENT - PEN PURCHASES: We usually accept a small number of consignments. Ask about consignment rates (we reserve the right to turn down consignments), or see the website for details. We are also always looking to purchase one pen or entire collections.

ABBREVIATIONS:

| | | | |
|-----------|---|------|--|
| Mint | - No sign of use | Fine | - Used, parts show wear |
| Near Mint | - Slightest signs of use | Good | - Well used, imprints may be almost gone, plating wear |
| Excellent | - Imprints good, writes well, looks great | Fair | - A parts pen |
| Fine+ | - One of the following: some brassing, some darkening, or some wear | | |

| | | | |
|-----|---------------------------------|------|---|
| LF | - Lever Filler | HR | - Hard Rubber |
| PF | - Plunger Filler (ie. Sheaffer) | BCHR | - Black Chased Hard Rubber |
| PIF | - Piston Filler (ie. Montblanc) | RMHR | - Red Mottled (Red & Black) Hard Rubber |
| PK | - Push Knob Filler (Montblanc) | CF | - Cartridge Filler |
| GPT | - Gold Plated Trim | ED | - Eyedropper Filler |
| GFT | - Gold Filled Trim | CPT | - Chrome Plated Trim |
| BF | - Button Filler | NPT | - Nickel Plated Trim |
| CRF | - Crescent Filler (ie. Conklin) | | |

RETURN PRIVILEGES, POSTAGE and WARRANTIES (see website for complete information):

You have five (5) days from receipt of a pen to return it for any reason. All pens are restored unless specifically noted in the description. **Postage & Insurance are additional.** All pens are shipped insured. For shipments in the US we prefer USPS, and outside the US we prefer Express Mail International. We will of course use other shippers at customer request.

Generally, our pens are warranted for 90 days. Unfortunately, we sometimes cannot restore some modern pens (post-1970) due to lack of parts or inaccessibility to the mechanisms (many modern pen companies manufacture their pens with the plan that no restoration will ever be done). If we can't restore the pen, you *may* still have some recourse through the manufacturer or distributor. We can provide contact information for you on request. Thank you for your understanding.

NIBS: Note: A Semi-Flex nib will flex with moderate pressure. A light hand will see no line variation.

When reading item descriptions, please assume each nib is original for its pen, and is 14K gold, unless otherwise noted.

Check out our Website - www.gopens.com

See our website for:

- ~Catalog photos in color, plus a downloadable color copy you can print at home.
- ~Information about our book "*Waterman Past & Present - The First Six Decades*"
- ~Protective Shipping & Storage tubes.
- ~White Slotted Storage boxes.
- ~Glass Covered Storage/Display Boxes.
- ~Slotted Trays for chests, boxes and drawers.
- ~Subscription information.
- ~Historical Catalogs for reference.
- ~Information on our Warranties.
- ~Our Privacy Policy.
- ~Secure Credit Card Submission.
- ~Customer Feedback.
- ~And more...



Extraordinary Pens

| | | | | |
|---|----------------|------|---|--------|
| 1 | AA Waterman | 1905 | #4 Twist-fill in BHR with High Floral Relief Repousse GF cap & barrel overlay (gorgeous!). Medium, triple-flexible nib. Near mint. | \$1500 |
| 2 | Astoria | 1933 | Model 1 Astoria octagonal Safety eyedropper-fill in 18KRG (gold-filled) on BHR. Cap and barrel both fully covered. Black & White inlaid enamel cap top in perfect condition. Alternating panels of engine-turned chasing and relief Floral & Vine repousse. Fine, flexible nib A few minor dings, otherwise near mint. Unrestored. | \$1000 |
| 3 | Conklin | 1907 | 4S Crescent-fill in Red Mottled Hard Rubber. GFT. The rounded lock ring, no engravings on cap or barrel, and the imprint on the crescent (Crescent Filler Trade Mark) date the pen to 1907. Very early "Upside-down tear drop" (pre-heart vent hole nib, used in the first Conklin production. The nib also has a very odd imprint, curved at the top and bottom, "Conklin X Toledo." Two minor stress cracks in the left side of the nib (fine, extra-flexible), otherwise near mint+ and very, very rare! | \$1000 |
| 4 | Montblanc | 1930 | L-30 Push-knob-fill in Black & Pearl. One of the rarest of the Montblanc celluloids, in a top-of-the-line model. The "high-top" model came with both a matching top and a BHR top. This one has the much rarer matching top! Extremely rare! GFT. Fine, flexible nib. Near mint. | \$3500 |
| 5 | Montblanc | 1935 | 128 PL Push knob-fill in Platinum. Perhaps Montblanc's most spectacular celluloid! GFT. Two-toned nib. Near mint+. Two available: (1) Fine nib; (2) Extra-fine, semi-flexible nib. | \$4250 |
| 6 | Montblanc | 1952 | 149 PIF in Celluloid. Earliest production, with long barrel window (perfect pinstripe lines) and flat "ski slope" feed. Prior to the introduction of injection molded 'Precious Resin'. Outer two cap bands are sterling silver, otherwise GFT. Visualated barrel window with perfect vertical lines. Near mint+ (could be new-old-stock). Three-tone 14K nib. Two available: (1) Medium, italic nib; (2) Medium/fine nib. | \$2500 |
| 7 | Parker | 1907 | 41 Oversize eyedropper-fill in Black Hard Rubber with GF "Filigree" overlay. Similar in design to the smaller Parker 16. Also came with sterling silver overlay. The only O/S Parker overlay, and extremely rare. Medium, extra-flexible nib. Near mint+ | \$2000 |
| 8 | Parker | 1910 | 45 Lucky Curve eyedropper-fill in BHR with Corrugated Abalone Barrel and White Pearl Crown. Crisp cap imprint. Keyhole nib (fine, flexible). Has been filled, otherwise near mint. | \$1500 |
| 9 | Parker | 1932 | Depression Era combination BF Pencil-Pen in Ivory and Bronze. Excruciatingly rare, and almost always found with damage and/or heavy ambering. This example is new-old-stock and mint. Broad nib. | \$1000 |



| | | | | |
|----------|----------|------|---|--------|
| 10 11 | Parker | 1929 | Duofold Sr. Streamlined Set in Jade. Perfect color (999 out of a thousand will have discolored)! In 1929 Parker introduced the switch from the straight-sided Duofold to the streamlined model, like this one. GFT. Medium/fine nib. Fitted with a silicon sac to preserve the color. Twist-activated pencil. | \$1000 |
| 12 13 | Parker | 1945 | Parker 51 Vacumatic-fill Set in Buckskin. 2-Toned, 14K "Empire" caps (rare). 14K tasse. Fine nib. Has been filled, otherwise near mint++. Twist-activated pencil. | \$2400 |
| 14 | Parker | 1947 | "Secretary" Imperial Vacumatic in Black. GFT. Red, ball-shaped, telephone dialer on very top of cap. Highly visualated barrel. Barrel threads are at the very top of the gripping section (as they are on all Imperial Vacs). Barrel is factory imprinted "SECRETARY." Extremely rare! Fine nib. Some imprint wear, otherwise near mint. | \$700 |
| 15 | Waterman | 1905 | 402 "Checkbook" eyedropper-fill pen in Black Hard Rubber with Sterling Silver "Filigree" overlay. Extremely rare. Made to be stored within the spiral holding the pages of your checkbook, with the flared top so it wouldn't fall down inside the checkbook and become hard to retrieve. Also came in cardinal hard rubber and in both colors without an overlay. Barrel indicia engraved "Beth." Extra-fine, flexible nib. Near mint+ | \$2500 |
| 16 | Waterman | 1908 | (4)12 eyedropper-fill in Cardinal Hard Rubber with Sterling Silver "Filigree" overlay. For every 100 of these found in BHR, one is found in CHR. Fine, flexible nib. Has original patina (will polish on request). No dents or dings. Near mint. | \$2000 |
| 17 | Waterman | 1920 | 02855 LF in Black Hard Rubber with MUSIC NIB. GFT. The pen itself is a rare model, with no cap band and a band at both the top of the cap and bottom of the barrel. The nib is from Waterman Canada. Near mint. | \$900 |
| 18 | Waterman | 1930 | Patrician LF in Moss Agate. The pride of the Waterman pen line! Waterman was late to the gate when it came to switching from rubber to plastic pens. They had invested a lot of time and money to develop colored ripple pens (olive, rose, blue-green) and wanted to recoup investment by producing in those materials. Eventually, they saw the handwriting on the wall and switched to plastic, introducing the now iconic Patrician. GFT. This model has Waterman's "Tip-Fill" feature, allowing the pen to be filled with only the tip of the nib in ink, eliminating the need to wipe off the gripping section after filling. Medium, extra-flexible nib with an italic flair. A little brassing to the lever box, otherwise near mint. | \$1400 |
| 19 20 | Waterman | 1927 | 42 Continental Overlay DOCTOR's SET in Yellow and White Gold-filled. Alternating wide White GF Filigree bands surrounded by narrower rings of Yellow GF filigree. Foliate cap top and clip. Together with an equally stunning matching thermometer and pencil holder with a foliate carrying handle. Fine nib. New-old-stock. Mint. Case with Thermometer and Twist-activated Pencil. | \$3100 |

21: Model #20 - the largest Waterman



22: World's Smallest Pen

23: World's Smallest Safety Pen



| | | | | |
|----|----------|------|---|--------|
| 21 | Waterman | 1914 | 20 POC in Smooth Black Hard Rubber. The largest pen Waterman produced. The POC model has a threaded cap. In 1913 Waterman introduced their first pen with a thread-on cap, the coin filler, with a "PSF" ("Pocket Self Filler") model designation. In 1914 they added the threaded cap to their eyedropper models, with a "POC" (meaning "POCKET" pen) designation, like this pen. In early 1915, with the introduction of the lever, Waterman returned to the "PSF" designation. Features a huge #10 nib, used only for the Model 20, this one fine. Holds an enormous amount of ink. Slight ambering of the cap and barrel, and barrel imprint wear (readable with a loop), otherwise near mint. A very hard to find pen! | \$1850 |
| 22 | Waterman | 1910 | "World's Smallest Pen" eyedropper-fill in Black Hard Rubber. Often called the "Doll Pen" because one rests in Queen Mary's doll house, on the King's Library Table. Just over 1.5" long and less than 1/8" in diameter, this pen was actually produced by Waterman as a way for their salesmen to spend time with potential new accounts. Their salesmen would visit a druggist, jeweler, shop owner, to try to open a new account. The buyer would inevitably say that they didn't need a new pen line and were happy with what they had. The salesman would now offer to show them the "World's Smallest Pen" as long as he was there (often alongside a Waterman 20!). This allowed more time and interaction together, and often resulted in a sale! Waterman then published in their in-house newspaper, Pen Prophet, that they would produce these for sale by their vendors as a special order item only. Near mint+, and extremely rare, especially in the original "coffin" box! | \$3500 |
| 23 | Waterman | 1910 | "World's Smallest SAFETY Pen" eyedropper-fill in Black Hard Rubber. Yes, it has an operating spiral, just like any of the larger size production models! See above for more information about Waterman's World's Smallest Pens. Near mint+, and extremely rare, especially in the original "coffin" box! | \$4250 |



| | | | | |
|----|----------|------|---|--------|
| 24 | Waterman | 1927 | <p>Point of Purchase Model 7 Counter Tray complete with the original 6 Red-Ripple pens, each color coded for it's particular slot in the tray. Waterman color-coded their caps and nibs for easy selection of the type of nib the user wanted. This was their answer to the Wahl Eversharp "Personal Point" pens. There are three other colors not represented in this tray: Black ("Stenographer's nib"); Brown (originally the same flexibility as Pink, but a shorter nib, later became a stiffer nib); and Grey (oblique, rigid). There may have been a "White" ("course," which was Waterman's term for Broad) but one has yet to be found.</p> <p>At this time other pen manufacturers were racing to the celluloid bandwagon to produce pens in colors which were in high demand by the public. Waterman had invested so much time and money in producing colored hard rubber pens that they waited until 1929 to introduce a celluloid pen (the Patrician).</p> <p>Left to Right (Waterman's catalog descriptions in quotes).</p> <p>Purple: "Fine and Stiff. Makes a thin clear line with utter accuracy."</p> <p>Pink: "Fine and Flexible." Actually, triple-flexible. Perhaps the most popular and sought after nib available today.</p> <p>Green: "Rigid. Tempered to armor-plate hardness. Excellent for carbon copies."</p> <p>Red: "Standard. Medium flexibility for general use." In actuality, the "Red" nibs vary in flexibility from "Flex" to "Triple-Flex." This one in medium, extra-flexible.</p> <p>Yellow: "Rounded. The tip is ball shaped to write smoothly in any direction. Suits southpaws."</p> <p>Blue: "Blunt. An improved stub point. Makes a broad line."</p> <p>This is perhaps a once-in-a lifetime opportunity to own a wonderful piece of Waterman history, along with six near mint pens, all operating perfectly. The pens are not available individually can select a different pen every day of the week (and have Sunday off!).</p> | \$4250 |
|----|----------|------|---|--------|



Soennecken Salesman Sample Case

| | | | | |
|----|------------|------|--|--------|
| 25 | Soennecken | 1950 | Salesman's Sample Case in Black. Hinged, 14.25" x 8.25" x 1.25" closed, with two latches. Contains 17 capped pens (no nibs or feeds) - none alike), a few pen barrels and 25 celluloid rod samples - none alike. The rod samples were originally tied together, but some of the string has not survived. A remarkable find, with some wonderful celluloid samples. A little wear to the inner fabric, otherwise near mint. | \$1500 |
|----|------------|------|--|--------|





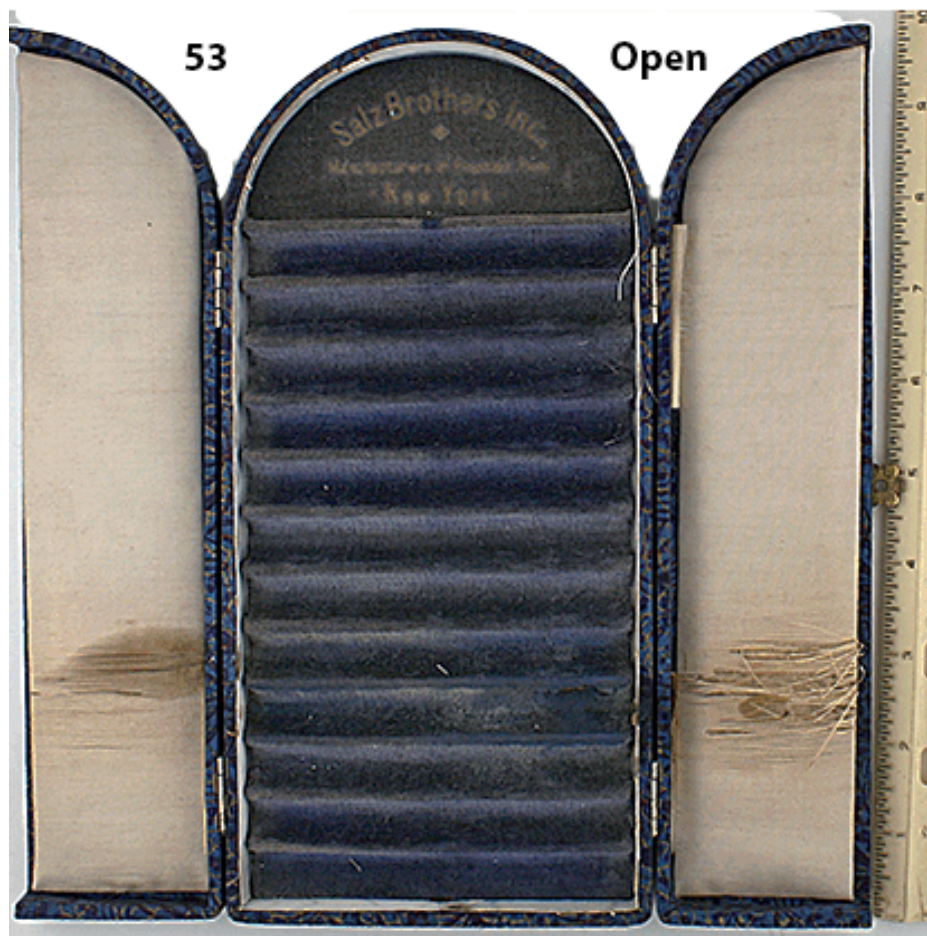
Salz Brothers Peter Pan Pens

The Salz Brothers Pen Company (ca. 1918 - 1950) was founded in NY by Ignatz and James Salz. Salz initially produced high quality pens, but over time their quality deteriorated. Around 1920 their *Peter Pan* model was introduced (named after the fictional character of the same name). Initially a very small eyedropper-fill pen (first hard rubber then celluloid), it became larger ca. 1925 when they introduced the lever. The final models (ca. 1935) were larger yet. Salz eventually morphed into the Stratford Pen Company after James died in the late 1920's. The greatest legacy of the Salz Brothers are their highly collectible Peter Pan pens in their fascinating array of colors and decorations. They often came with a tasse, for use with a dance card or a ribbon ring to be work around the neck. All the pre-1939 Peter Pan pens came a signed 14K "Peter Pan" nib, and all the 1939 pens with a "Warranted 14K" nib. Very few had barrel imprints (those which do are noted in the descriptions). Nib size information (F, M, B, etc., on request).

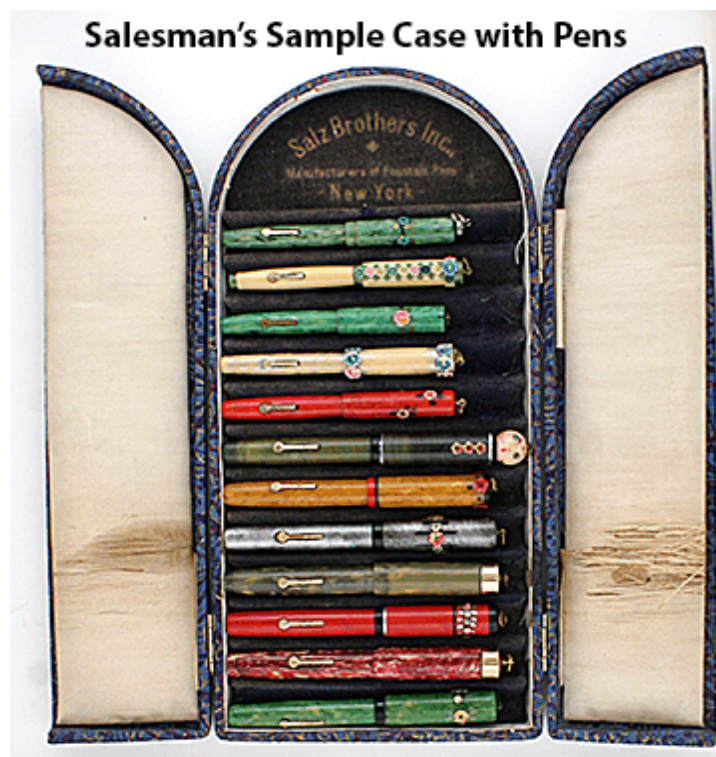
| | | | | |
|----|---------------|------|--|------|
| 26 | Salz Brothers | 1920 | Peter Pan eyedropper-fill in BHR. Early production with the ribbon ring not screwed into the cap but attached into a round globe integral to the cap-top. Wide knurling near cap-top. Some wear to the barrel imprint (fully readable), otherwise near mint. | \$65 |
| 27 | Salz Brothers | 1920 | Peter Pan eyedropper-fill in BHR. Early production with the ribbon ring not screwed into the cap but attached into a round globe integral to the cap-top. Wide knurling both near cap-top and barrel bottom. Wide G/F cap band, engraved in Olde English "M.P.H." It's remarkable that such a pen would have been personalized for it's owner! Near mint with original ribbon-ring. This is the only one of the hard-rubber examples with actually has a "Salz Bros (etc)" barrel imprint. Perhaps too expensive, or too cumbersome, to continue doing so. | \$85 |
| 28 | Salz Brothers | 1920 | Peter Pan eyedropper-fill in BHR with a Tan casein cap-top. Narrow knurling both near cap-top and barrel bottom. Near mint. | \$50 |
| 29 | Salz Brothers | 1920 | Peter Pan eyedropper-fill in BHR with a Ivory casein cap-top. Narrow knurling both near cap-top and barrel bottom. Near mint. | \$50 |
| 30 | Salz Brothers | 1920 | Peter Pan eyedropper-fill in BHR with a Ivory casein cap-top (narrower than the one on the pen above). Near mint. This model with no knurling, but has a very nice barrel imprint. | \$60 |
| 31 | Salz Brothers | 1920 | Peter Pan eyedropper-fill in BHR with a Blue casein cap-top. Narrow knurling both near cap-top and barrel bottom. Near mint. | \$50 |
| 32 | Salz Brothers | 1920 | Peter Pan eyedropper-fill in BHR with a Green casein cap-top. Narrow knurling both near cap-top and barrel bottom. Near mint. | \$50 |
| 33 | Salz Brothers | 1920 | Peter Pan eyedropper-fill in BHR with a White casein cap-top (narrower than the one on the pen above). Near mint. This model with no knurling and a very nice barrel imprint. With original ribbon. | \$70 |
| 34 | S' Brothers | 1925 | Peter Pan eyedropper-fill in Blue. Near mint. | \$65 |
| 35 | S' Brothers | 1925 | Peter Pan eyedropper-fill in Fire-Engine Red. Near mint. | \$85 |
| 36 | S' Brothers | 1925 | Peter Pan eyedropper-fill in Light Orange. Near mint. | \$65 |
| 37 | S' Brothers | 1925 | Peter Pan eyedropper-fill in Dark Orange. Near mint. | \$65 |
| 38 | S' Brothers | 1925 | Peter Pan eyedropper-fill in Tan with Brown Veins. Near mint. | \$65 |
| 39 | S' Brothers | 1925 | Peter Pan eyedropper-fill in Translucent Yellow. Near mint. | \$65 |



| | | | | |
|----|---------------|------|--|-------|
| 40 | S' Brothers | 1925 | Peter Pan LF in 1/10 18K Gold-filled "Hand Engraved Vine." Near mint+. Comes with original ribbon. | \$175 |
| 41 | S' Brothers | 1925 | Peter Pan LF in Dark Blue. GFT. Near mint. | \$65 |
| 42 | S' Brothers | 1925 | Peter Pan LF in Coco-Bolo. GFT. Near mint. | \$95 |
| 43 | S' Brothers | 1925 | Peter Pan LF in Translucent Green Pearl. GFT. Near mint. Comes with original ribbon ring. | \$75 |
| 44 | S' Brothers | 1925 | Peter Pan LF in Green & Ivory Striped. GFT. Near mint. | \$100 |
| 45 | S' Brothers | 1925 | Peter Pan LF in Orange Pearl. GFT. Near mint. | \$65 |
| 46 | S' Brothers | 1925 | Peter Pan LF in Tan Pearl. GFT. Near mint. Comes with original ribbon ring. | \$75 |
| 47 | S' Brothers | 1925 | Peter Pan LF in Green & Dark Bronze. GFT. Near mint. | \$65 |
| 48 | S' Brothers | 1925 | Peter Pan LF in Green Pearl. GFT. Near mint. | \$65 |
| 49 | Salz Brothers | 1925 | Peter Pan LF in Translucent Ivory & Bronze. The cap adorned with two Blue Flowers with hand-painted Bronze leaves. GFT. Near mint. Comes with original ribbon. | \$110 |
| 50 | Salz Brothers | 1925 | Peter Pan LF in Translucent Tan Pearl. The cap adorned with two offset Blue Flowers with hand-painted Black stems and Green leaves. GFT. Near mint. Comes with original ribbon ring. | \$110 |
| 51 | Salz Brothers | 1925 | Peter Pan LF in Green Pearl. The cap adorned with four Blue Flowers in a circle, with hand-painted Black stems and Bronze leaves. GFT. Near mint. | \$110 |
| 52 | Salz Brothers | 1925 | Peter Pan LF in Orange with Red Swirl. The cap adorned with eight White flowers in a circle, each flower then hand painted with yellow, black & Red details. GFT. Near mint. Comes with original ribbon ring | \$125 |



| | | | | |
|----|---------------|------|--|-------|
| 53 | Salz Brothers | 1935 | Salesman's Sample Case in Cathedral Shape, signed on the inside top "Salz Brothers Inc. Manufacturers of Fountain Pens New York." Measures 4 1/2" x 9 1/2" closed and 9 1/4" x 9 1/2" open. Contains slots for 12 pens (the original pens which were in the case are #s 54 to 65 below). I date the case at around 1935, as it was sized to easily accommodate both the smaller and larger size pens. Some of the silk lining on the inner doors is worn and threadbare, otherwise the case is in wonderful condition. | \$275 |
|----|---------------|------|--|-------|





| | | | | |
|----|---------------|------|---|-------|
| 54 | Salz Brothers | 1925 | Peter Pan LF in Green Pearl. The cap adorned with four Blue Flowers in a Circle, with hand-painted Black stems and Bronze leaves. GFT. New-old-stock. Mint. | \$100 |
| 55 | Salz Brothers | 1925 | Peter Pan LF in Ivory Pearl. The cap adorned with eight multi-color flowers at the top, 2 vertical rows of eight flowers each down the front and back, a painted blue cap top and lip. Barrel bottom also painted Blue. GFT. New-old-stock. Mint. | \$175 |
| 56 | Salz Brothers | 1925 | Peter Pan LF in Green Pearl. The cap adorned with two Pink Flowers with hand-painted Black stems and Bronze leaves. GFT. New-old-stock. Mint. | \$100 |
| 57 | Salz Brothers | 1925 | Peter Pan LF in Ivory Pearl with painted Silver swirl. The cap top and band each adorned with eight multi-color painted flowers. Barrel bottom also painted Blue. GFT. New-old-stock. Mint. | \$150 |
| 58 | Salz Brothers | 1925 | Peter Pan LF in Orange Pearl. The cap adorned with four offset Pink flowers with hand painted Black petals. GFT. Nib cracked, otherwise new-old-stock. Mint. | \$125 |
| 59 | Salz Brothers | 1939 | Peter Pan LF in Green Pearl. GFT. Cap top with hand painted girls' head with inlaid green jewel eyes. Cap top adorned with three hand-painted flowers. With Black & Silver bands at cap top (just below the head) and cap lip. New-old-stock. Mint. | \$200 |
| 60 | Salz Brothers | 1939 | Peter Pan LF in Tan Pearl. GFT. Top of cap adorned with four red flowers with Black petals. Cap-top painted black. Red Cap lip. New-old-stock. Mint. | \$150 |
| 61 | Salz Brothers | 1939 | Peter Pan LF in Hand Painted Silver Swirl. GFT. Cap adorned with eight hand painted flowers with Black pedals. Black painted cap band. New-old-stock. Mint. | \$175 |
| 62 | Salz Brothers | 1939 | Peter Pan LF in Green with Lighter Green Swirl. Very unique celluloid. GFT and cap derby. Correct warranted 14K nib. New-old-stock. Mint. | \$125 |
| 63 | Salz Brothers | 1939 | Peter Pan LF in Red. GFT. Cap adorned with thirteen jeweled flowers in a circle with painted silver pedals. Black painted cap-top and cap band. New-old-stock. Mint. | \$175 |
| 64 | Salz Brothers | 1939 | Peter Pan LF in Red Pearl with White Veins. Very unique celluloid. GFT and cap derby. New-old-stock. Mint. | \$125 |
| 65 | Salz Brothers | 1939 | Peter Pan LF in Green Pearl. GFT. Cap adorned with six flowers in a circle (every other flower jeweled) with painted Black stem and silver pedals. Black painted cap band. New-old-stock. Mint. | \$150 |



Modern Pens (no boxes or papers)

| | | | | |
|----|-------------------|------|--|--------|
| 66 | Conway Stewart | 2005 | Silver Duro I BF in "Green Whirl" (Blue Pearl with Green Veins) LE # 370/011. Sterling Silver trim. Two-toned 18K extra-fine nib. New-old-stock. Mint. List \$940. | \$500 |
| 67 | Kaweco | 2000 | Sport cartridge/converter-fill in Blue Swirl. Round barrel & 8-sided cap. Factory provided CP accommodation clip. 14K medium/broad nib. New-old-stock. Mint. Cartridge included. | \$75 |
| 68 | Guiliano Mazzuoli | 2012 | 365 Officina Micrometer Rollerball in Solid Aluminum matte finish. Italian manufacturer. Very respectable quality. Refill included. | \$50 |
| 69 | Guiliano Mazzuoli | 2012 | 365 Officina Micrometer Rollerball in Solid Aluminum matte finish. Italian manufacturer. Very respectable quality. Refill included. | \$50 |
| 70 | Guiliano Mazzuoli | 2012 | 365 Officina Tap Rollerball in Solid Aluminum matte finish. Italian manufacturer. Very respectable quality. Refill included. | \$50 |
| 71 | Guiliano Mazzuoli | 2012 | 365 Officina Marker Rollerball in Solid Aluminum matte finish. Italian manufacturer. Very respectable quality. Refill included. | \$50 |
| 72 | Montblanc | 1990 | 146R LeGrande PIF in Burgundy (rare). GFT. Visualated Barrel. Extra-fine nib. New-old-stock. Mint with original barrel label. | \$475 |
| 73 | Montblanc | 1990 | 149 PIF in Black "Precious Resin." GPT. Two-toned, wet medium nib. New-old-stock. Mint. | \$450 |
| 74 | Montblanc | 1992 | Hemingway PIF Limited Edition in Cardinal with Black Cap. GPT. Visualated Barrel. Three-toned, medium nib. New-old-stock. Mint. Comes with Service Booklet. | \$1900 |
| 75 | Montblanc | 1992 | Hemingway Limited Edition Ball Pen in Cardinal with Black Cap. GPT. New-old-stock. Mint. | \$700 |



| | | | | |
|----|-------------|------|---|-------|
| 76 | Monteverde | 2010 | Arista "Shaker" Demonstrator Ballpen in Transparent Acrylic. Propel and repel the refill by slicking (shaking) your wrist upwards. Chrome-plate trim. (Also accepts highlighter refills). Retired model. Refills readily available . New-old-stock. Mint. Converter included. | \$35 |
| 77 | Montegrappa | 2010 | "Cortina" Mountains of the World (retired collection) cartridge/converter-fill set in Ivory with Black Veins. Cortina (Italy) hosted the 1956 Winter Olympics and is one of the most famous mountain localities in the world. CPT. Medium, alloy nib marked "Iridium Point Germany." New-old-stock. Mint. Converter included. | \$75 |
| 78 | Montegrappa | 2010 | Twist-activated ball pen for above set. | Set |
| 79 | Monteverde | 2010 | Monteverde Jewelria Ball Pen in Palladium-plated Sterling Silver (with 12 grams of silver). Date approximate. Refill included. | \$35 |
| 80 | Omas | 2000 | Rebecca Moss PIF equipoised set in Fire Engine Red. CPT. 18K White Gold extra-fine nib. New-old-stock. Mint. | \$150 |
| 81 | Omas | 2000 | Rollerball for above set. | Set |
| 82 | Omas | 2000 | Rebecca Moss PIF equipoised set in Blue. CPT. 18K White Gold extra-fine nib. New-old-stock. Mint. | \$150 |
| 83 | Omas | 2000 | Rollerball for above set. | Set |
| 84 | Parker | 2006 | Duofold Centennial cartridge/converter-fill in Black & Pearl. GPT. 2-tone 18K medium nib. New-old-stock. Mint. Converter included. | \$350 |
| 85 | Underwood | 2015 | Piccadilly Ebonite cartridge/converter-fill set in Black Hard Rubber with Blue Veins. Palladium-plate trim (on brass). Spring loaded clip. Medium (wet) nib. Manufactured in France. 2-tone 18K nib. List \$595. | \$250 |
| 86 | Underwood | 2015 | Rollerball for above set. Refill included. | Set |



Rare & Beautiful Early Black Hard Rubber Eyedropper-fill Pens

| | | | | |
|----|------------|------|---|-------|
| 87 | Lancaster | 1882 | #7 "Government Pen" eyedropper-fill in Black Chased Hard Rubber. Warren Lancaster started in 1879, and many say his was the first successful fountain pen, a claim more commonly associated with LE Waterman. Interestingly, Lancaster blames the demise of his business on LE, following Waterman's contracting with the Day Rubber Co for all its production. Early on his biggest customers were J.P Morgan Co. And the Federal Government, hence the "Government Pen." Large #7 medium, triple-flexible nib. Near mint+ | \$350 |
| 88 | Anonymous | 1900 | Stylographic eyedropper-fill in Black Smooth Hard Rubber. No identification markings anywhere. Near mint+ | \$100 |
| 89 | Aurora | 1928 | R. A. 5 Safety eyedropper-fill in Black Hard Rubber. Extremely rare and early. GFT, including the floral design clip washer. Fine nib. The largest size in which the R. A. Safety was manufactured. Slight ambering, otherwise near mint. Incredibly hard to find. | \$350 |
| 90 | Mabie Todd | 1905 | #2 eyedropper-fill in Black Chased Hard Rubber. Barrel factory imprinted with the manufacturer's information on one side and, on the other side, "Property of the N.Y. Telephone Co." Black accommodation clip signed "Clipper" M. T. & Co. Made in England." Fine nib. Near mint+ | \$125 |
| 91 | Mabie Todd | 1910 | #2 eyedropper-fill in Black Chased HR (large "V" pattern). GFT (two 5/16" plain barrel bands, each with 2 chased rings). Double-broad, oblique nib with early overfeed. New-old-stock. Mint. | \$250 |
| 92 | Montblanc | 1920 | 2M Safety eyedropper-fill set in Octagonal Black Smooth Hard Rubber. Very rare! Broad, flexible nib. Near mint+ (could be new-old-stock). Unrestored. Shown with nib propelled. | \$900 |
| 93 | Montblanc | 1920 | Model #10 Octagonal Smooth Hard Rubber Twist-activated Pencil for above set. Buy just the pencil for \$150. | Set |
| 94 | Moore | 1908 | #6 Safety eyedropper-fill in Black Smooth HR. Medium, extra-flexible, italic nib. Near mint+ | \$350 |
| 95 | Parker | 1916 | 33 Lucky Curve eyedropper-fill in BHR with Chased Filigree barrel and Cap crown. Barrel indicia engraved in script, "Eva." Keyhole-vent nib (fine, flexible). Crisp imprint. Has been filled, otherwise, near mint. | \$500 |
| 96 | Waterman | 1923 | Model 41 Safety eyedropper-fill in Black Chased Hard Rubber. The "1" size Safety pen, with it's "1" size nib, is extremely rare! Fine nib. Even oxidation, otherwise near mint+. Shown with nib propelled. | \$250 |
| 97 | Wirt, Paul | 1900 | #2 Taper-cap eyedropper-fill in Black Chased Hard Rubber (kind of a rocket ship shaped design). Unusually long pen. Extra-fine nib with early overfeed. New-old-stock. Mint. | \$350 |



Beautiful Early Black Hard Rubber Self-Filler Pens

| | | | | |
|-----|------------------|------|---|-------|
| 98 | A.A. Waterman | 1905 | #21 (2 size) Twist-fill in Black Chased Hard Rubber. Double-broad, semi-flex nib. Near mint. | \$300 |
| 99 | A.A. Waterman | 1905 | #61 (6 size) Twist-fill in Black Chased Hard Rubber. GFT. Extremely attractive, with its repousse cap band at the top of the cap rather than at the cap lip and early clip. Fine nib. Near mint. | \$600 |
| 100 | Conklin | 1903 | #2 Crescent-fill in Black Chased Hard Rubber. Early, Taper-cap model. Fine, triple-flexible nib. Near mint. | \$750 |
| 101 | Crocker | 1917 | Unusual Filling Mechanism. #6 Hatchet-fill in Black Chased Hard Rubber. GFT. Unusually wide cap band, with advertising: Engraved image of a "Dutch Boy" plus engraving, "Holland's Far East Tea and Coffee." Holland's was actually out of Massachusetts. Medium, extra-flexible nib. Near mint+ (could be new-old-stock). | \$375 |
| 102 | Crocker | 1917 | Unusual Filling Mechanism. Model 33 #3 Hatchet Fill in Black Chased Hard Rubber. GFT. Fine, flexible nib. New-old-stock. Mint. | \$275 |
| 103 | Mabie Todd | 1928 | "230C S-F" LF in Black Smooth Hard Rubber with red ripple cap-top. GFT, including two barrel bands and cap-top band. Broad nib. Trim brassing, otherwise near mint | \$175 |
| 104 | Sheaffer | 1920 | #3 LF in Black Chased Hard Rubber. NPT. Fine, extra-flexible nib. New-old-stock. Mint. | \$225 |
| 105 | Sheaffer | 1922 | #2A LF in Black Chased Hard Rubber. NPT (lever). Fine, flexible nib. Near mint. | \$150 |
| 106 | Wahl Eversharp | 1925 | #2 Signature LF in Black Chased Hard Rubber. GFT, including the roller-ball clip. Wonderful, medium, triple-flexible nib. A few mars to the cap band at the cap top, otherwise near mint. | \$175 |
| 107 | Webster | 1925 | #2 LF in Black Smooth Hard Rubber. GFT, with no cap band and a band at both the top of the cap and bottom of the barrel (note the similarity to the Waterman, item #17 above). Medium/broad "Warranted 14K" nib. A tad of band brassing, otherwise near mint. | \$125 |
| 108 | Whitney-Richards | 1908 | Unusual Filling Mechanism. #2 slide-fill in Black Chased Hard Rubber. NPT. The lever is hinged in the middle. Raising the front of the lever causes its hinged back half to depress the bladder (mechanism patented by Schnell shortly later). W-R lasted from 1910 to 1927 in Ohio. Fine, extra-flexible nib. Near mint+. | \$175 |
| 109 | Waterman | 1924 | 56 LF in Black Smooth Hard Rubber. GFT. Medium, extra-flexible nib (very expressive). New-old-stock. Mint. | \$400 |



A Page of Vintage Italian Pens

| | | | | |
|-----|--------|------|--|--------|
| 110 | Aurora | 1933 | Novum Faceted Large LF in Golden Pearl with Black Veins (beautiful). The largest size in which this model was made. GFT. Rare, first model, with spring loaded "Safety Clip." Aurora Platiridio #5 fine nib. The Novum is the famous Aurora model with the lever mounted on the very bottom of the barrel. Near mint+ | \$1750 |
| 111 | Aurora | 1942 | Novum Faccettata Large LF in Red Pearl with Black Veins. GFT. The model came in three sizes, large, medium and small. This is the large. The Novum is the rare Aurora with the filling lever located on the very bottom of the barrel. Medium, italic, triple flexible nib! Just a touch of high-point cap band brassing, otherwise near mint. | \$1250 |
| 112 | Aurora | 1949 | 88 PIF in Black. Famous NIKARGENTA cap, made of an alloy of nickle and silver. This was Aurora's answer to the Parker 51, with it's slip cap and hooded nib. CP crown and solid clip. Visualated barrel. Fine, flexible nib. New-old-stock. Mint. [Two available] | \$300 |
| 113 | Aurora | 1951 | 88 PIF set in Black. Gold-filled cap with dense pinstriping. This was Aurora's answer to the Parker 51, with it's slip cap and hooded nib. CP crown and solid clip. Visualated barrel. Medium, flexible nib. New-old-stock. Near mint+ in original blue aluminum tube with polishing cloth. | \$400 |
| 114 | Aurora | 1951 | Cap-activated pencil for above set. | Set |
| 115 | Omas | 1937 | Lucens Round Plunger-fill Large in Black. This model was made in three sizes – this is the largest. Visualated barrel with wide spiral lines. GFT with wide "Greek-Key" center cap band. Rollerball clip. Fine nib. Near mint. | \$1500 |
| 116 | Omas | 1937 | Lucens Round Plunger-fill Large in Silver Laminated. Visualated barrel. GFT. Rollerball clip. Fine, flexible nib. Near mint. | \$900 |
| 117 | Omas | 1939 | Lucens Plunger-fill Medium in Black. Highly visualated barrel, with black horizontal rings. GFT. Roller-ball clip. The Lucens was the flagship of the Omas line. Fine, extra-flexible nib. Near mint, | \$800 |
| 118 | Omas | 1939 | Extra twist-activated Pencil in Red Pearl. GFT. Roller-ball clip. Near mint+ | \$125 |
| 119 | Omas | 1961 | "Fera VS" Ball Pen in Silver Laminated (looks like a Parker Vacumatic). Highly modernistic design, with 6-sided cap morphing into a round pen by the time it reaches the very wide cap band. GFT. Uses a Pelikan refill (readily available). Refill accessed by unscrewing the barrel nozzle. Very rare and beautiful! Near Mint+. | \$175 |



Vintage Pens - Alphabetical

| | | | | |
|------------|---------|------|---|-------|
| 120 | Carters | 1929 | #4 size LF set in Green Pearllex. GFT. Medium, semi-flexible nib. Near mint. | \$250 |
| 121 | Carters | 1929 | Twist-activated pencil for above set. Has different clip than the pen. | Set |
| 122 | Carters | 1929 | #6 size LF in Red & Black Mottled. GFT. Medium/fine nib. A touch of brassing to the clip ball, lever brassing, slight wear to the top line of the barrel imprint. Excellent+. | \$200 |
| 123 | Chilton | 1925 | #6 pneumatic-fill ring-top in ELEPHANT SKIN on BHR. GFT. Two sets of bands on the cap, three at the top and one the lip, both with BHR inserts. Fine nib. Near mint. Excruciatingly rare! | \$600 |
| 124 | Conklin | 1918 | 4 Crescent-fill ring-top in Red Hard Rubber (extremely rare). GFT. Medium nib. Wear and minor distress to the cap band (no brassing). A tad of imprint wear (still deep and crisp) and a slight color shift where the barrel was protected by the cap. Otherwise near mint. | \$500 |
| 125 | Conklin | 1920 | #2 Crescent-fill in BHR with Art Nouveau Floral overlay. Looks very pretty, but I need to call it user grade due to all the brassing you can see when looking closely. The saving grace is the wonderful fine, triple-flexible nib . Excellent. | \$275 |
| 126 | Conklin | 1922 | 4 Crescent-fill in Red Hard Rubber. GFT. Medium, semi-flexible nib. Brassing to the clip and to the top and bottom edges of the cap band. Some imprint wear (fully readable). | \$750 |
| 127 | Conklin | 1927 | Endura Sr. LF in Sapphire Blue. Set off beautifully with inlaid red bands. GFT. Fine, semi-flexible nib. A little trim brassing, otherwise near mint. | \$550 |
| 128 129 | Conklin | 1931 | Nozac Standard 5M 12-sided Word Gauge PF set in Red and Silver herringbone. The most highly desired color of the Nozacs, perhaps because it is the most attractive. GFT. Medium, semi-flexible nib. Some surface scratches and brassing to the top and bottom edges of the cap band and the very top and bottom of the clip. Otherwise near mint. Twist-activated pencil. | \$900 |



| | | | | |
|-----|----------------|------|---|-------|
| 130 | Conway Stewart | 1938 | LeTigre #86 LF in Blue Pearl with Bronze Veins. Rare model. GFT, including the over-the-top "Soldier Clip." Fine, semi-flexible nib. Near mint. | \$175 |
| 131 | Conway Stewart | 1951 | Model 58 LF in Blue Pearl Marble. GF cap bands. GP lever and clip. Medium/broad, flexible nib. A bit of plating wear (clip and lever), otherwise near mint. | \$175 |
| 132 | Crocker | 1905 | Unusual filling mechanism. #3 Blow-fill in Red Mottled HR. The user blew through a hole in the barrel bottom to pneumatically depress the bladder. Then, with the nib in the ink bottle, the pneumatic pressure was released and ink drawn into the bladder. Eventually, Crocker supplied a rubber syringe (bulb) which fit over the end of the pen to replace the (unsanitary) use of the mouth. Fine, triple flexible "Warranted" nib. Near mint. | \$350 |
| 133 | Eberhard Faber | 1940 | "Permapoint" #2 size LF in Black, set off nicely with Yellow bands at both ends. NPT. GP nib (medium/fine), signed, "E.Faber Iridium Tipped Made in U.S.A." A bit of cap band and clip brassing (otherwise near mint), so I'll call this user grade. | \$50 |
| 134 | Faultless | 1907 | Unusual filling mechanism. #2 "Thumb-filler" cone-cap pen with rotating barrel in Red Mottled HR. There is an oval shaped hole in the barrel. Once rotated, the thumb operates a press bar which fills the pen. Lakeside and Aiken Lambert pens used the same filler. These pens were probably actually manufactured by CE Barrett and sold to several companies. Warranted nib (fine). The barrel imprint indicates a 1909 patent. Near mint. | \$175 |
| 135 | LeBoeuf | 1927 | #4 half-sleeve-fill in Ivory Pearl with Green Veins. GFT. Medium/fine, semi-flexible nib. Just a touch of cap & barrel ambering, except where the barrel is covered by the cap, where the ambering is greater. Some surface scratches. Excellent+. Strikingly beautiful! | \$200 |
| 136 | Mabie Todd | 1905 | #2 size eyedropper-fill in High Relief Repousse GF cap & barrel "Chased & Diamonds" pattern. Indicia eng., "A.D. Frupp." Patent dates on posting knob. Fine, extra-flexible nib. Has been filled, otherwise near mint. | \$950 |
| 137 | Mabie Todd | 1927 | L200/60 (#2 size) Swan Leverless twist-fill in Burgundy with Bronze Pearl & Silver Pearl. GFT. Medium, semi-flexible nib. New-old-stock. Mint. | \$300 |
| 138 | Moore | 1925 | L-96 LF in Black. GFT, including the 4 cap bands; three at the top and one at the lip. Broad, italic, maniflex (stiff) nib. A tad of clip brassing (primarily the ball), otherwise near mint. | \$375 |
| 139 | Moore | 1925 | L-93 LF in Tuscan (Burgundy). GFT, including the 4 cap bands; three at the top (black in-between) and one at the lip. Fine, flexible nib. A touch of clip ball brassing, otherwise near mint+. | \$250 |



| | | | | |
|-----|------------|------|---|-------|
| 140 | Morrison's | 1925 | #4 size LF set in Gold Filled "Wave Chased" pattern. Fine nib. New-old-stock. Mint in original box with original label. | \$175 |
| 141 | Morrison's | 1925 | Twist-activated Pencil for above set. With original label at top. | Set |
| 142 | Osmia | 1939 | 64 PIF in Black. GFT. Visualated barrel. Medium, wartime alloy nib. New-old-stock. Mint in original box with papers. | \$100 |
| 143 | Osmia | 1950 | 0224 BF in Ivory with Black Veins. GFT. Fine, semi-flexible, alloy nib. Owner's name on barrel, "Adolf Schweitzer Aachen." Near mint+. | \$150 |
| 144 | Osmia | 1950 | 0222 BF in Ivory with Black Veins. GFT. 14K, fine, extra-flexible nib. Near mint+. | \$150 |
| 145 | Osmia | 1957 | 8843 PIF in Green Pearl Striped. GFT. Visualated barrel. Two-toned, medium, extra-flexible nib. Near mint+ (could be new-old-stock). | \$250 |
| 146 | Pilot | 1955 | Unusual filling mechanism. "Super 200 Switch-fill" in Light Grey. The filling mechanism is very simple. A cam at the bottom of the filling mechanism is moved 90 degrees, like switching a wall light switch, to force a pressure bar against the bladder, and then switched back to release the pressure bar. GFT. Fine nib. New-old-stock. Mint. | \$125 |
| 147 | Pilot | 1981 | "Tsuru" (Crane) Pilot Deluxe cartridge/converter-fill in Hiramakie over metal cap and barrel. The "Deluxe" is a rarer, higher end, difficult to find series, with fluted clip. 14K, fine nib. Artist signed. New-old-stock. Mint. Converter included. Pilot nibs are date coded – this one is 12/81. | \$250 |
| 148 | Security | 1928 | Security #5 Twist-fill in Red Mottled Hard Rubber. Inside the light yellow Bakelite cap-top is the check protector with it's rotating blades used to perforate the check so it could not be altered. GFT, including the spring loaded clip. Medium, extra-flexible nib. New-old-stock. Mint. Shown with cap on top of cap removed so you can see the check protector mechanism. | \$600 |
| 149 | Soennecken | 1952 | 103 PIF in Green Pearl with Black Pinstriping. GFT. Visualated barrel. Medium/fine, semi-flexible nib. New-old-stock. Mint. | \$250 |
| 150 | Tiffany | 1980 | Ball Pen in Sterling Silver with 14K solid gold band. "T" clip. Uses Cross refill (included). Some surface scratches and minor mars noticeable with a loop, otherwise near mint. | \$150 |



A Page of Vintage Montblanc Pens

| | | | | |
|-----|-----------|------|--|--------|
| 151 | Montblanc | 1935 | 333½ PIF Set in Green Pearl. Rare color, and early version with the two piece filler unit. Visualated barrel. Medium, semi-flexible nib. Near mint+ | \$2000 |
| 152 | Montblanc | 1935 | Pix button-activated Pencil for above set. | Set |
| 153 | Montblanc | 1935 | 234½ Luxury PIF in Black. GFT. Visualated barrel. Medium/fine nib. Near mint+. | \$500 |
| 154 | Montblanc | 1935 | 20 Masterpiece Push Knob-fill in Coral Red. Rare. GFT. Fine nib. Near mint+ | \$700 |
| 155 | Montblanc | 1936 | 124G Meisterstuck Push Knob-fill in Black. GFT. A rare top-of-the-line model. Fine nib. Near mint. | \$1200 |
| 156 | Montblanc | 1939 | 232 PIF in Black. GFT. Wartime, fine, flexible alloy nib (the alloy is iridium, gold and ruthenium). Near mint. | \$300 |
| 157 | Montblanc | 1950 | 142 Masterpiece PIF in Silver Striped. GFT. Visualated barrel. Some barrel ambering (otherwise near mint), but a wonderful medium, extra-flexible nib. | \$900 |
| 158 | Montblanc | 1950 | Model 615 Clip-activated Ball Pen in Green Stripe (rare). GFT. Near mint. | \$400 |
| 159 | Montblanc | 1955 | 124 PIF in Fluted Gold-filled. Visualated barrel. 18K OBB nib. Near mint. | \$550 |
| 160 | Montblanc | 1955 | 142 Masterpiece PIF in Black Celluloid (when these were made by hand, pre-injection molded "Precious Resin.") GFT. Medium/broad, flexible nib. Wear to the visualated barrel pinstriping, otherwise near mint. | \$375 |
| 161 | Montblanc | 1960 | 221 PIF in Burgundy. GFT. Visualated barrel. Fine nib. New-old-stock. Mint with original labels. | \$300 |



Three Pages of Vintage Parker Pens

| | | | | |
|------|--------|------|---|-------|
| 162 | Parker | 1920 | 25 Jack Knife Safety BF in Black Smooth Hard Rubber. Before the button-fill, the 25 was sold as both as a "click-fill" pen and an eyedropper-fill "Trench Pen" with a compartment on the bottom for ink tablets. A larger, hard to find size. Fine, flexible nib (rare to find a flexible nib). Some imprint wear (almost all readable), otherwise near mint. | \$500 |
| 163 | Parker | 1927 | Duofold Jr. BF in Mandarin Yellow. GFT. Fine nib. Near mint+ | \$450 |
| 164 | Parker | 1928 | True Blue BF set. Designed as a lower cost market entry than the Duofold, initially named "Three Fifty" and the color called "Modernistic Blue and White," production lasted only two years. GFT. Almost always found with heavy ambering, mint sets, such as this one, are extremely hard to find and highly desirable. Extra-fine/fine nib. A hint of ambering where the barrel is protected by the cap, otherwise near mint+ (could be new-old-stock). | \$475 |
| 165 | Parker | 1928 | Twist-activated pencil for above set. | Set |
| 166 | Parker | 1928 | True Blue BF. See above for some historical information. Mint color. Medium/fine nib. Mint. New-old-stock in period Parker leather "Penvelope." | \$525 |
| 167 | Parker | 1928 | Twist-activated pencil for above set. | Set |
| 168 | Parker | 1928 | Duofold Jr. BF in Cardinal. GFT. Medium nib. Deep, crisp imprint, but barrel has two small gouges, one by the imprint and the other by the blind cap, otherwise near mint. | \$100 |
| 169 | Parker | 1928 | Lady Duofold BF in Mandarin Yellow. GFT. Medium nib. Near mint+ | \$350 |
| 170 | Parker | 1928 | Duofold Sr. BF "Big Red" in Cardinal. Medium nib. Near mint+. See matching pencil below. | \$450 |
| 171 | Parker | 1929 | Duofold Jr. BF in Black. GFT. Wet writing STUB nib (extremely rare). A tiny bit of wear to the upper line of the barrel imprint (fully readable), otherwise near mint. | \$200 |
| 171A | Parker | 1929 | Duofold Jr. Twist-activated pencil in Black. GFT. Near mint. Matched pen above and below. Buy for \$50 with purchase of either pen. | \$85 |
| 172 | Parker | 1929 | Duofold Jr. BF in Black. GFT. Medium nib. Near mint. See matching pencil above. | \$125 |



| | | | | |
|-----|--------|------|---|-------|
| 173 | Parker | 1929 | Duofold Jr. BF in Black. GFT. Broad, flexible nib (very rare). New-old-stock. Mint with original cap and barrel labels. UK manufacture. | \$425 |
| 174 | Parker | 1929 | Duofold Jr. BF set in Black & Pearl. Normally found with moderate to very heavy darkening, this set has outstanding color without a hint of ambering. Medium nib. Fitted with a silicon sac to preserve the color. New-old-stock. Mint. | \$500 |
| 175 | Parker | 1929 | Twist-activated pencil for above set. | Set |
| 176 | Parker | 1929 | Duofold Sr. BF in Black. Fine, triple-flexible nib (outstandingly rare). Near mint. | \$500 |
| 177 | Parker | 1929 | Duofold Sr. Streamline BF in Mandarin Yellow. Rare color, as it wasn't very popular in the marketplace at the time. GFT. Medium, semi-flexible nib. New-old-stock. Mint with part of the original label (on the bottom of the blind cap). | \$900 |
| 178 | Parker | 1929 | Duofold Sr. Streamline BF in Mandarin Yellow. Rare color, as it wasn't very popular in the marketplace at the time. GFT. Medium nib. New-old-stock. Mint with original label (on the bottom of the blind cap). | \$900 |
| 179 | Parker | 1929 | Pastel Moire BF in Coral. The "Pastel" was introduced in 1927 as a lower cost alternate to the Duofold, and produced in 6 colors, both solid and "lined" the latter called "Moire." Production stopped by 1932 and they are rare today, especially the models with clips (more ring-tops were made, as the pen was designed to appeal to the ladies). GFT. Medium/fine nib. A touch of imprint wear (fully readable) otherwise near mint. | \$225 |
| 180 | Parker | 1929 | Pastel Moire BF ring-top in Naples Blue. See above for historical information. Medium/fine, extra-flexible nib (rare). Near mint+. | \$175 |
| 181 | Parker | 1930 | Duofold Sr. In Burgundy. GFT. Medium/broad nib. A tad of imprint wear (fully and easily readable) and minor surface scratches noticeable with a loop, otherwise near mint. | \$350 |
| 182 | Parker | 1932 | Duofold Sr. BF in Sea Green Pearl (Green Marble). GFT. Broad nib. The last Duofold color added, with few made (Depression years) and therefore rare today. Canadian manufacture. Near mint. | \$700 |



| | | | | |
|-----|--------|------|--|-------|
| 183 | Parker | 1979 | 105 cartridge/converter-fill rolled-gold (gold-filled) "Bark." Medium nib. Spring loaded clip (new design for this model). UK manufacture. Near mint+ Converter included. | \$200 |
| 184 | Parker | 1937 | Deluxe Challenger BF in Grey Marble. The "Challenger" was introduced in 1934, using the same celluloids as were used on the Vacumatics. A year later the "Deluxe Challenger" was introduced as a higher level live with different trim and a slightly different shape. 1937 introduced the Royal Challenger, the high end of the line. NPT. Medium/fine, semi-flexible nib. Near mint. | \$150 |
| 185 | Parker | 1937 | Deluxe Challenger BF in Red Marble. See above for some model history. GFT. Fine nib. Near mint. | \$150 |
| 186 | Parker | 1936 | Deluxe Challenger BF in Green Marble. See above for some model history. GFT. Fine nib. Near mint+ | \$150 |
| 187 | Parker | 1938 | Royal Challenger BF in Red Herringbone. GFT, including the wide chased cap band. Visualated barrel. Fine nib. A minor surface scratch here and there, otherwise near mint. | \$275 |
| 188 | Parker | 1965 | 65 "Flighter De Luxe" cartridge/converter-fill brushed Stainless Steel. GFT. Black gripping section. Medium nib. Converter included. New-old-stock. Mint with original clip label. | \$175 |
| 189 | Parker | 1967 | 45 "Happy Pen" cartridge/converter-fill set in Mandarin Yellow. A rare model and rare color! Medium nib. New-old-stock. Mint. Converter included. | \$200 |
| 190 | Parker | 1967 | Button-activated Ball Pen for above set. | Set |
| 191 | Parker | 1972 | 61 cartridge/converter-fill (NOT capillary-fill) in Grey with 2-tone Pink and Yellow Gold-filled "Rainbow" cap. Because of issues with the capillary fill system, Parker re-tooled the pen as a cartridge/converter fill model. It was short lived and soon replaced with the very successful Parker 75. Double-broad, italic nib. Converter included. | \$175 |
| 192 | Parker | 1976 | 61 "Stratus" cartridge-converter-fill in Gold electroplate. Part of Parker's "Cloud" series, this one fully pinstriped over a cloud background. The other two models in the series are the Cumulus and the Cirrus. New-old-stock. Medium nib. Mint with original clip label. Converter included. | \$275 |



A Page of Parker Prototype Pens

| | | | | |
|-----|--------|------|---|-------|
| 193 | Parker | 1956 | Prototype 61 Capillary-fill set in Blood Red. When Mrs. Parker saw the shop prototype she didn't like the color, so it was never produced. This example was obtained from a Parker prototype shop employee. Fine nib. Has been filled, otherwise new-old-stock, near mint+. Buy with prototype ball pen below at \$800. | \$500 |
| 194 | Parker | 1956 | Prototype 61 cap-activated Ball Pen for above set. Sells independently from pen at \$400. Refill included. | \$300 |
| 195 | Parker | 1956 | Prototype 61 cap-activated Pencil in Blue. Both a prototype color and a prototype design. These were designed to be part of the set with the prototype 61 which has the die cut "61" in the bottom tasse through which the ink is drawn up into the pen. See, for example, Catalog #71, item #200. Just like the fountain pen, the ball pen was never put into production and is very rare today. Refill included. | \$200 |
| 196 | Parker | 1956 | Prototype 61 cap-activated Pencil in Blood Red. See above for information. | \$200 |
| 197 | Parker | 1996 | Prototype Duofold Centennial cartridge/converter-fill in Black with rare Brass Overlay with "Grapes on Vine." Charles Heidsieck Winery (UK) wanted a pen to give to their customers and asked Parker to produce several samples from which they could choose. This is one of the prototypes they did not select. GPT. 18K, fine nib. New-old-stock. Mint. While the date code on the pen is 1987, the prototype is from 1996. Converter included. | \$550 |
| 198 | Parker | 1996 | Prototype Duofold International cartridge/converter-fill in Matte Red Epoxy (a color Parker only otherwise used only for Japan). "Charles Heidsieck" on the cap in gold, inside a gold rectangle. "Grapes on Vines" on barrel in gold. See above for additional descriptive information. GPT. Two-tone 18K, fine nib. New-old-stock. Mint. | \$450 |
| 199 | Parker | 1996 | Prototype 88 cartridge/converter-fill in Matte Red Epoxy (a color Parker only otherwise used at the time for Japan) over brass. "Charles Heidsieck" on the cap in gold, inside a gold rectangle. "Grapes on Vines" on barrel in gold. See above for additional descriptive information. GPT. 23K gold-plate nib (medium). Blue gripping section. New-old-stock. Mint. Converter included. | \$200 |
| 200 | Parker | 1996 | Prototype 88 cartridge/converter-fill in Matte Red Epoxy (a color Parker only otherwise used at the time for Japan). Pinstriped gold-electroplated cap. "Grapes on Vines" on barrel in gold. See above for additional descriptive information. GPT. 23K gold-plate nib (medium). Blue gripping section. New-old-stock. Mint. | \$150 |
| 201 | Parker | 1996 | Prototype 88 cartridge/converter-fill in Brass. Both cap & barrel with relief Vines. See above for additional descriptive information. GPT. 23K gold-plate nib (medium). Blue gripping section. New-old-stock. Mint. | \$350 |



A Page of Vintage Parker 51 Pens

| | | | | |
|------------|--------|------|---|-------|
| 202 | Parker | 1943 | 51 Vacumatic in Midnight Blue. Brushed Lustraloy (stainless steel) cap. The rarest year of manufacture, especially in the fourth quarter, such as this one. Almost all of Parker's manufacturing capacity was being used for the war effort (bomb sights, etc.), with what few pens being made all going to the armed services for soldiers and officers. On top of all this, the pen is fitted with a double-broad "Ball" nib, designed for left handed writers (although right handed writers could certainly use it as well). New-old-stock. Mint. | \$300 |
| 203 | Parker | 1945 | 51 Vacumatic in Black. Double-jeweled. 1/10 16K "Custom" cap (pinstriped with chevron band). Near mint. Two available: (1) Extra smooth, medium/fine nib: (1) Fine nib @ \$350. | \$375 |
| 204 | Parker | 1948 | 51 Vacumatic in Dove Grey. Rare, brushed Lustraloy (stainless steel) "Stacked Coin" cap. Fine nib. New-old-stock. Mint. | \$175 |
| 205 | Parker | 1947 | 51 Vacumatic in Midnight Blue. 1/10 14K GF cap in alternating (2) pinstripes, (2) wavy lines, and plain panels (rare). Medium nib. New-old-stock. Mint. | \$225 |
| 206 | Parker | 1948 | 51 Aerometric Demonstrator in Clear Acrylic. Fine nib. Brushed Lustraloy cap. New-old-stock. Mint with original nib size label. | \$450 |
| 207 | Parker | 1949 | 51 Aerometric in Burgundy. UK manufacture. Rolled Silver cap in the "5-converging line" pattern (rare). Broad nib (also rare). Cap with some surface scratches in the silver plating (noticeable with a loop), otherwise new-old-stock, mint with perfectly clear plyglass.. | \$150 |
| 208 | Parker | 1951 | 51 Aerometric in Forrest Green. 1/10 12K GF Cap in the 5-Converging Lines pattern. Extra-fine nib. Near mint. | \$200 |
| 209 | Parker | 1951 | 51 Aerometric Set in Navy Grey. Brushed Lustraloy (stainless steel) caps. Medium nib. New-old-stock. Mint with perfectly clear plyglass. | \$150 |
| 210 | Parker | 1951 | Cap-activated Pencil for above set. | Set |
| 211 212 | Parker | 1969 | 51 Aerometric Mark III Set in Midnight Blue. 1/10 12K GF Caps in alternating 9 pinstripes and plain panels. Late 51 design, now looking more like the 1956 introduced Parker 61. Medium nib. New-old-stock. Mint with clean plyglass. Cap-activated Ball Pen. | \$250 |



A Page of Vintage Parker Vacumatic Pens

| | | | | |
|------|--------|------|---|-------|
| 213 | Parker | 1935 | Vacumatic "Oversize" in Black. GFT. Canadian manufacture. Double-jeweled. Visualated barrel. Two-tone fine, semi-flexible nib. Near mint. | \$450 |
| 214 | Parker | 1937 | Vacumatic "Oversize" in Silver Laminated. NPT. Double-jeweled. Visualated barrel. Two-tone medium nib. Some trim brassing, otherwise near mint. | \$400 |
| 214A | Parker | 1937 | Vacumatic Oversize twist-operated Pencil. Very rare. Matches pen above. Buy with pen above at \$125. | \$175 |
| 215 | Parker | 1938 | Vacumatic Jr. in Red Shadow-wave (a rare, short-lived model). GFT. Double-jeweled. Visualated barrel. Aluminum "lock-down" filler. Medium/fine nib. A touch of imprint wear (fully readable), otherwise near mint. | \$275 |
| 216 | Parker | 1938 | Vacumatic Jr. in Green Shadow-wave (a rare, short-lived model). GFT. Double-jeweled. Visualated barrel. Aluminum "lock-down" filler. Medium/fine nib. Near mint. | \$275 |
| 217 | Parker | 1938 | Vacumatic Jr. in Golden Shadow-wave (a rare, short-lived model). GFT. Double-jeweled. Visualated barrel. Aluminum "lock-down" filler. Fine nib. Near mint. | \$250 |
| 218 | Parker | 1939 | Vacumatic "Junior" in Red Shadow-wave. Second-year model with the longer "Speed-line" filler unit plunger. GFT. Visualated barrel. Rare, fine-extra-flexible nib. Near mint. | \$275 |
| 219 | Parker | 1940 | Vacumatic "Sr. Maxima" in Silver Laminated. Double-jeweled. NPT. Two-tone medium nib. A touch of trim wear, otherwise near mint. | \$450 |
| 220 | Parker | 1940 | Vacumatic "Sr. Maxima" in Green Laminated. Double-jeweled. GFT. Two-tone fine nib. Near mint+ (could be new-old-stock). | \$550 |
| 221 | Parker | 1942 | Duofold Vacumatic "Major" in Blue/Silver/Black Striped. GFT, including the wide chased cap band, indicative of the Major. This is the first model of the striped Vacumatic (introduced in 1940), which has the long aluminum "Speedline" plunger. Visualated barrel. Medium nib. A touch of imprint wear (fully readable), otherwise near mint. | \$175 |
| 222 | Parker | 1941 | Duofold Vacumatic "Junior" in Green/Bronze/Black Striped. GFT. Visualated barrel. Medium nib. Near mint. | \$125 |
| 223 | Parker | 1948 | Vacumatic "Sub-Debutante" in Golden Laminated. GFT. Visualated barrel. Medium/fine nib. Near mint. | \$100 |



A Page of Vintage Pelikan Pens

| | | | | |
|-----|---------|------|--|-------|
| 224 | Pelikan | 1931 | 100 PIF in Grey Pearl (rare color). Rare, early production (remember, the 100 was only introduced in 1929). Amber celluloid barrel. Has the very early long, tapered gripping section and the cap with four vent holes. Medium, extra-flexible nib. A wonderful near mint+ example of this pen! | \$750 |
| 225 | Pelikan | 1936 | 100 PIF in Green Pearl. Amber celluloid barrel. GFT. Fine, flexible nib. Near mint+ | \$350 |
| 226 | Pelikan | 1937 | 100N PIF in Black. Rare model from Pelikan's Italian plant, with the black binde integrated into the acrylic barrel rather than applied over the barrel. GFT. Visualated barrel. Fine nib. Near mint. A very rare pen, indeed! | \$525 |
| 227 | Pelikan | 1947 | 100N PIF in Grey Pearl (rare color). GFT. Green celluloid barrel. Fine, flexible nib. Near mint+ | \$600 |
| 228 | Pelikan | 1950 | 400N PIF set in Brown Striped. GFT. Visualated barrel. Fine nib. User grade with brassing of the back bottom edge of the clip and the lower edge of the cap band. Some ink stains in the visualated barrel and surface scratches on the cap. Excellent+ | \$150 |
| 229 | Pelikan | 1950 | Button-activated repeater Pencil for above set. Trim brassing. | Set |
| 230 | Pelikan | 1950 | 400 PIF in Brown Striped. GFT. Visualated barrel. Medium, flexible nib. Near mint+ | \$225 |
| 231 | Pelikan | 1952 | 140 PIF in Green. Rare color (most 140s are striped green with a black cap). Visualated barrel. Medium nib. Near mint+. | \$300 |
| 232 | Pelikan | 1956 | 400NN PIF in Green Striped. GFT. Fine nib. Has the "Click Cap." which locked when turned so it can't open in your pocket. Visualated barrel. Near mint. | \$200 |
| 233 | Pelikan | 1956 | 400NN PIF in Brown Striped. GFT. Fine nib. Fine nib. Has the "Click Cap." which locked when turned so it can't open in your pocket. Visualated barrel. Near mint. | \$225 |
| 234 | Pelikan | 1973 | 400NN Merz & Krell PIF in Green Striped. GFT. Pelikan commissioned this German company to make these pens for them. While they are equal quality to the Pelikan made pens, there are slight design differences and most parts are not interchangeable. M&K also made Senator, Melbi and Diplomat pens. Visualated barrel. Fine, flexible nib. Near mint+ | \$275 |



A Page of Vintage Sheaffer Pens

| | | | | |
|-----|----------|------|---|-------|
| 235 | Sheaffer | 1922 | #2 LF in Smooth Sterling Silver with Hand Painted Geometric Design in Blue, Green and Red. Near mint. 99% of the paint is intact. Extra-fine nib. Will polish on request. Near mint. Unrestored. | \$250 |
| 236 | Sheaffer | 1922 | #2 LF set in Smooth Gold-filled with Hand Painted Geometric Design in Blue, Green, Black and Purple. 90%+ of paint intact. Fine, flexible nib. Near mint. Unrestored. | \$250 |
| 237 | Sheaffer | 1922 | Twist-activated Pencil for above set. 99% of paint intact. | Set |
| 238 | Sheaffer | 1915 | 46 Special Demonstrator LF in Black "Wavy Line" chased hard rubber. The cap has two portholes, one showing the securing of the clip, the other showing the seal between the inner cap and gripping section. The barrel has four portholes showing the operation of the lever against the bladder. Factory produced and provided to dealers to show how the pen operates. Very rare today. Nib (fine) imprinted "Sheaffer's 46 Special." Near mint+. | \$275 |
| 239 | Sheaffer | 1933 | #3-25 Balance LF ring-top in Blue, Black & White. Beautiful celluloid – and the only model in which Sheaffer used it. GFT. Medium nib. Near mint. | \$175 |
| 240 | Sheaffer | 1935 | #5 Feather-touch LF in Ebonized Pearl. GFT. Medium/fine nib. Near mint+. | \$175 |
| 241 | Sheaffer | 1935 | #3 Balance LF in Brown Striped. GFT. Fine nib. Near mint. | \$125 |
| 242 | Sheaffer | 1937 | Lifetime Balance Deluxe LF in Green Striped. Full length, thinner model, with the wide fully pinstriped cap band made for Jewelry Stores (so they had different pens than the pen shop down the street). GFT. Visualated section. Fine, italic nib. Near mint. | \$200 |
| 243 | Sheaffer | 1937 | Lifetime Balance Large LF in Carmine Red. One of the hardest colors to find. GFT. Visualated section. Medium nib. Near mint. | \$750 |
| 244 | Sheaffer | 1942 | Tuckaway Triumph Touchdown-fill in Dark Blue with Chrome caps (engine-turned wavy lines) with GF bands and clip. Wrap-around fine nib. Near mint+. | \$175 |
| 245 | Sheaffer | 1942 | Twist-activated pencil for above set. | Set |



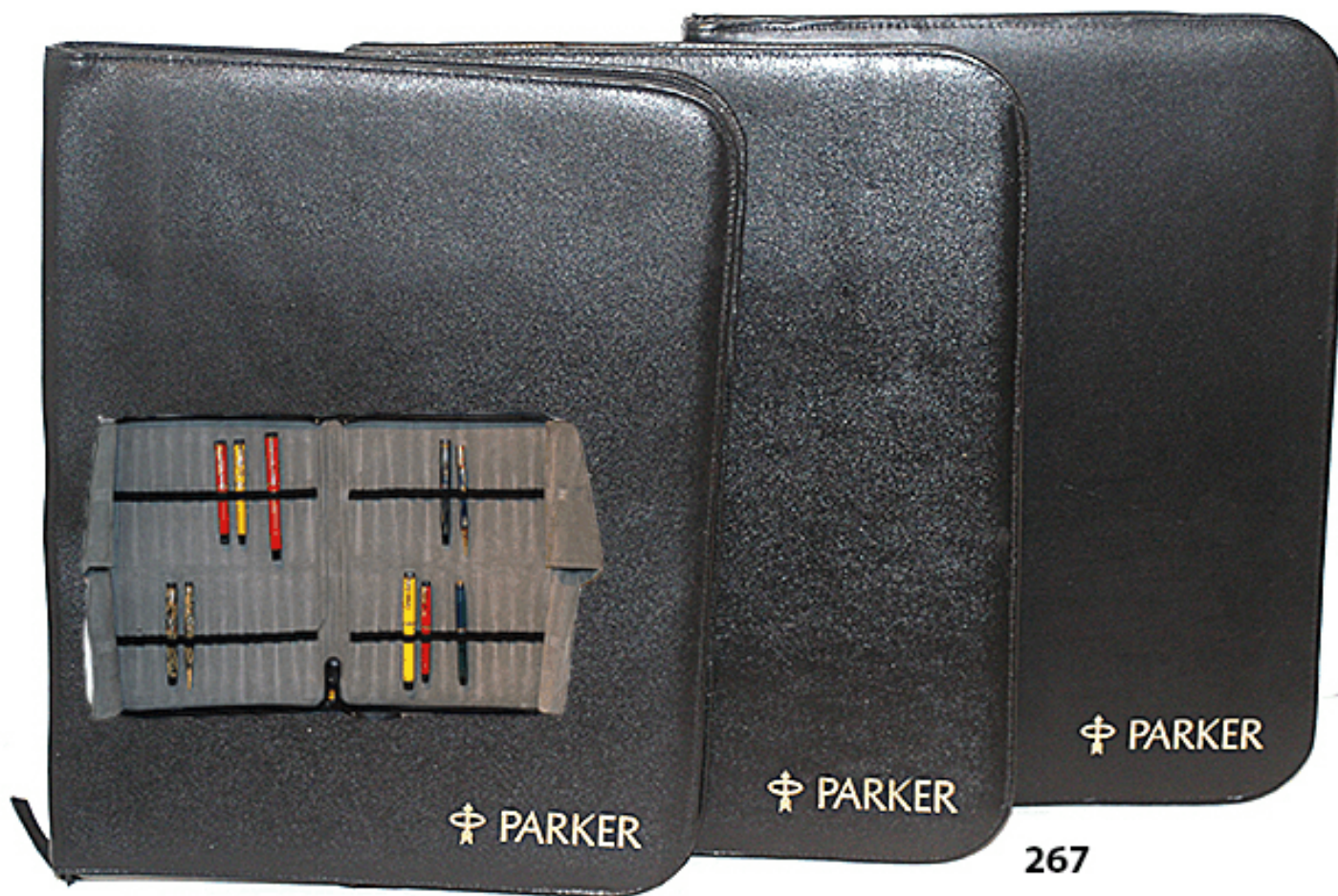
A Page of Vintage Wahl Eversharp Pens

| | | | | |
|------------|----------------|------|---|--------|
| 246 | Wahl Eversharp | 1925 | #2 Signature LF in Cardinal Smooth Hard Rubber (rare). GFT, including the roller-ball clip. The fine, extra-flexible nib is signed "Flexible." Near mint. | \$375 |
| 247 248 | Wahl Eversharp | 1925 | #4 Collonaide All Metal LF Set in Gold-filled engine-turned wave-chased circles with contrasting rectangular panels, with black enamel inlaid into the panels. A very rare pattern, and several times rarer with the enamel inlay intact, as is this example. Extra-fine/needle-point nib. Near mint+. Twist-activated pencil. | \$600 |
| 249 | Wahl Eversharp | 1927 | #6 size Gold Seal Personal Point LF in Lapis. GFT, including the roller-ball clip. The "Gold Seal" were Wahl's lifetime guaranteed models. The "Personal Point" nibs screwed in and out, so the dealer could fit the pen with the nib style of your choice, without having to stock extra pens (like they did with Waterman's color coded system). This medium, extra-flexible nib is signed "Flexible." Near mint+ | \$400 |
| 250 | Wahl Eversharp | 1929 | Oversize Deco Band Gold Seal Personal Point LF in Black. GFT, including the roller-ball clip. See pen #249 above for some explanations. This medium/fine, semi-flexible nib is signed "Signature." Near mint. | \$550 |
| 251 | Wahl Eversharp | 1929 | Oversize Deco Band Gold Seal Personal Point LF in Green & Bronze. GFT, including the roller-ball clip. See pen #249 above for some explanations. This medium/fine, semi-flexible nib is signed "Signature." Near mint. | \$650 |
| 252 | Wahl Eversharp | 1931 | Doric Oversize Gold Seal Adjustable Personal Point LF in Burma (smoke grey). GFT, including the roller-ball clip. See pen #249 above for some explanations. #9 Adjustable nib: fine to medium, extra-flexible. Some wear to the high points of the cap band, otherwise near mint. | \$1500 |
| 253 | Wahl Eversharp | 1931 | Doric Oversize Gold Seal Adjustable Personal Point LF in Black. GFT, including the roller-ball clip. See pen #249 above for some explanations. #10 Adjustable nib: fine, stiff, to fine, extra-flexible. Near mint+. | \$750 |
| 254 | Wahl Eversharp | 1936 | "Coronet" Adjustable nib LF in Gold Filled with inlaid black "Pyralin" windows in both the cap and barrel. Wahl's most highly Art-Deco pen design. Visualated barrel. Adjustable nib: fine, stiff, to fine, extra-flexible. A tad of brassing and a slight cap posting mark, otherwise near mint. | \$700 |
| 255 | W'Eversharp | 1943 | Skyline LF Set in Burgundy with 14K Smooth Solid Gold Caps. Medium nib. Near mint. | \$350 |
| 256 | W'Eversharp | 1943 | Button-activated Pencil for above set. | Set |



A Page of Vintage Waterman Pens

| | | | | |
|-----|----------|------|---|-------|
| 257 | Waterman | 1924 | Model 452 LF in BHR with Sterling Silver Overlay in the "Basket-weave" pattern. Beautiful! Medium, flexible nib. A few surface scratches noticeable with a loop, otherwise near mint. | \$400 |
| 258 | Waterman | 1930 | Lady Patricia LF in Turquoise (Blue & Bronze). GFT. Fine, extra-flexible, italic nib. A few surface scratches and a micro-ding in the cap band, noticeable with a loop, otherwise near mint. | \$250 |
| 259 | Waterman | 1930 | Lady Patricia LF in Moss Agate (Green & Bronze). GFT. Medium, stiff nib (signed "Manifold.") Near Mint+. | \$300 |
| 260 | Waterman | 1930 | Model 94 LF in Silver Pearl with Red Specks. NPT. I'll call this user grade because of trim wear (more to the cap band than to the clip), otherwise near mint, but an absolutely wonderful fine, extra-flexible nib. | \$200 |
| 261 | Waterman | 1930 | Model 94 LF in Brown Cream. GFT. Fine nib. Near mint. | \$250 |
| 262 | Waterman | 1939 | 100 Year LF in Black. First year model with the over-the-top "soldier" clip and the bands on only the barrel. Ribbed cap and barrel. GFT. Fine, flexible nib. New-old-stock. Mint. You'll never find a nicer example!. | \$750 |
| 263 | Waterman | 1939 | Model 5116 LF in Green Pearl with Blue Stripes. GFT. The only Waterman model with a die stamped design at the top of the clip. Medium, semi-flexible nib. Near mint. | \$275 |
| 264 | Waterman | 1940 | 100 Year LF Doctor's Set in White. GFT. Fine nib. New-old-stock. Mint with original barrel label. | \$500 |
| 265 | Waterman | 1940 | Thermometer for above set, | Set |
| 266 | Waterman | 1949 | Lady Garland 1357V Taperite LF in Black with 1/10 14K GF cap with short clip and wide engraved "flourish" chasing at the bottom of cap. The Taperite, with it's semi-hooded nib, was Waterman's answer to the Parker 51. It didn't succeed in the marketplace and is rare today. Fine, semi-flexible nib. New-old-stock. Mint with original barrel label. | \$125 |



267

| | | | | |
|-----|--------|------|---|------|
| 267 | Parker | 1975 | Three (3) Salesman Zipper Sample Cases in Black Leather (perhaps vinyl) for 48 pens. . Date approximate. Each with "Parker" and logo in Gold Leaf on bottom right hand corner of the case. Inside in Grey with 4 integral flaps, each protecting 12 pens (inside of two of the cases in light grey, the third in dark grey). Four sewn strips of Black Elastic to accommodate 12 pens each. Pens in photo not included. All gently used but in near mint condition with minor scuffs but no tears or ink stains. Price is for each. Three available. Please indicate the quantity you would like. | \$95 |
|-----|--------|------|---|------|



WATERMAN

PAST AND PRESENT

THE FIRST SIX DECADES



MAX DAVIS AND GARY LEHRER

Taper cap pens



| | | | | |
|-----|----------|------|--|------|
| 268 | Waterman | 2008 | <p><i>Waterman Past and Present - The First Six Generations</i> by Gary Lehrer and Max Davis.</p> <p>Note: Only 37 copies left, then we're sold out! Regular Hard Cover Edition, Coffee Table Size: 11" x 8.25".</p> <p>A comprehensive look at the first 60 years of Waterman Pen Company pens, advertising, and ephemera. With thousands of superb color reproductions, this is the definitive picture book for fountain pen collectors, ink bottle enthusiasts, ephemera lovers, and those interested in the history of writing instruments.</p> <p>A huge number of the items pictured have never before been photographed and published for collectors and historians.</p> <p>Established in 1883, Waterman is one of the few fountain pen manufacturers that still exists today.</p> | \$99 |
|-----|----------|------|--|------|

Sample
Pages

Thimble cap pen



Desk top bottles

