

Gary & Myrna Lehrer's

Quarterly Illustrated Vintage Pen Catalog

garylehrer@aol.com

Issue #76 - September 2015

See the Catalog in full color on the web site. For about a week you'll need a password for access (be sure to also see what's remaining from previous Catalogs).

WEBSITE PASSWORD FOR CATALOG #76: (www.gopens.com): ROSE

- Catalog #76 Features:**
- Lots of Vintage Montblanc, Waterman, Soennecken
 - Rare Montblanc 126E "Rose," 1935 Pelikan T111 Toledo
 - A rare Pullman, W'man 458 & "World's Smallest Safety"
 - 25+ Manufacturers Represented
 - Rare Astoria; Century; vintage Desk Sets
 - Over 260 Items

- Contact Information:**
- Tel: (203) 389-5295
 - email: garylehrer@aol.com
 - Fax: (859) 909-1882
 - Call until 9:00 PM Eastern Time; Fax or email anytime
 - We check our email often

Subscription Expired: ● A (3) on your mailing label means your subscription has expired. "Internet Only" renewal is \$10. "Hard Copy" Renewal is \$25 US and \$35 Foreign (see website for details). Received a sample copy? Don't forget to subscribe!

Please see inside front page for abbreviations and other important information!

Gary & Myrna Lehrer 16 Mulberry Road Woodbridge, CT 06525-1717



Here's Some Other Important Information:

GIFT CERTIFICATES: Available in any denomination. No extra cost! No expiration!

CONSIGNMENT - PEN PURCHASES: We usually accept a small number of consignments. Ask about consignment rates (we reserve the right to turn down consignments), or see the website for details. We are also always looking to purchase one pen or entire collections.

ABBREVIATIONS:

Mint - No sign of use	Fine - Used, parts show wear
Near Mint - Slightest signs of use	Good - Well used, imprints may be almost gone, plating wear
Excellent - Imprints good, writes well, looks great	Fair - A parts pen
Fine+ - One of the following: some brassing, some darkening, or some wear	

LF - Lever Filler	HR - Hard Rubber
PF - Plunger Filler (ie. Sheaffer)	BCHR - Black Chased Hard Rubber
PIF - Piston Filler (ie. Montblanc)	RMHR - Red Mottled (Red & Black) Hard Rubber
PK - Push Knob Filler (Montblanc)	CF - Cartridge Filler
GPT - Gold Plated Trim	ED - Eyedropper Filler
GFT - Gold Filled Trim	CPT - Chrome Plated Trim
BF - Button Filler	NPT - Nickel Plated Trim
CRF - Crescent Filler (ie. Conklin)	

RETURN PRIVILEGES, POSTAGE and WARRANTIES (see website for complete information):

You have five (5) days from receipt of a pen to return it for any reason. All pens are restored unless specifically noted in the description. **Postage & Insurance are additional.** All pens are shipped insured. For shipments in the US we prefer USPS, and outside the US we prefer Express Mail International. We will of course use other shippers at customer request.

Generally, our pens are warranted for 90 days. Unfortunately, we sometimes cannot restore some modern pens (post-1970) due to lack of parts or inaccessibility to the mechanisms (many modern pen companies manufacturer their pens with the plan that no restoration will ever be done). If we can't restore the pen, you *may* still have some recourse through the manufacturer or distributor. We can provide contact information for you on request. Thank you for your understanding.

NIBS:

When reading item descriptions, please assume each nib is original for its pen, and is 14K gold, unless otherwise noted.

Check out our Website - www.gopens.com

See our website for our Blog, and the following:

- ~Catalog photos in color, plus a downloadable color copy you can print at home.
- ~Information about our book "*Waterman Past & Present - The First Six Decades*"
- ~Protective Shipping & Storage tubes.
- ~White Slotted Storage boxes.
- ~Glass Covered Storage/Display Boxes.
- ~Slotted Trays for chests, boxes and drawers.
- ~Subscription information.
- ~Historical Catalogs for reference.
- ~Information on our Warrantees.
- ~Our Privacy Policy.
- ~Secure Credit Card Submission.
- ~Customer Feedback.
- ~And more...



Extraordinary Vintage Pens

1	Ancora	1940	"Large" LF in Black. And "Large" it is, both in height and girth. GFT, including the three cap bands and "claw foot" clip. A rare and beautiful model Medium/fine nib. New-old-stock. Mint.	\$1000
2	Astoria	1933	Model 1 Astoria octagonal Safety eyedropper-fill in 18K RG (gold-filled) on BHR. Cap and barrel both fully covered. Black & White inlaid enamel cap top in perfect condition. Alternating panels of engine-turned chasing and relief Floral & Vine repousse. Fine, flexible nib. A few minor dings, otherwise near mint. Unrestored.	\$1750
3	Century	1908	#2 "Cable-Twist" eyedropper-fill Red Mottled Hard Rubber. Very early, very rare, very beautiful! George Parker and William Palmer were both investors and executives in the Century Pen Company. Uses the "over-under" double feed. The patent date factory engraved on the pen, "Pat Dec 12 '93" is actually issued to George Parker who contributed the patent to Century (the Parker Pen Company never made a pen with an over-under feed). Broad, flexible nib. Near mint. http://www.google.com/patents/US510439?dq=parker+1893+pen#v=onepage&q=parker%201893%20pen&f=false	\$850
4	Mabie Todd	1920	#2 Blackbird "Toledo" lever-fill in Damascened-inlay. Damascening is the art of hand inlaying different metals into one another, typically, 24K gold or fine silver hammered into a darkly oxidized steel background, to produce intricate patterns and designs. The English term comes from a perceived resemblance to the rich tapestry patterns of damask silk. Often called "Toledo" because much of the art comes from Toledo, Spain, a steel working center since about 500 BC (still doing damascening today). The "Toledo" design on this particular pen uses hammered 24K gold to produce four dragons on each of the cap and barrel (8 in total), each dragon within a multi-edged and decorated tall golden triangle. The cap top with golden arches. Both the cap and barrel lower 1/2" edges with matching bands and golden leaves formed within circles of golden arches. Incredibly fine and beautiful work! Fine, extra-flexible nib. Near mint+.	\$1295
5	Montblanc	1920	Model 0 Baby Safety eyedropper-fill in RED MOTTLED HARD RUBBER (unbelievably rare). "Montblanc 0 14ct" nib (fine, flex). Crisp imprint. New-old-stock. Mint in original box, signed on top "Montblanc - Baby" (box a bit threadbare). Shown open.	\$5000
6	Montblanc	1933	Model 15 Push-knob fill in BHR with 14K "Sarastro" octagonal overlay. Alternating panels of fine pinstriping, and "Z"s formed within fine pinstriping. Correct "Montblanc 4 14C" nib (broad, flexible). The cap is hallmarked "S585." The "585" of course is the 14K solid gold mark. The "S" stands for "Sarastro," the Pforzheim, Germany master goldsmith famous for fabricating overlays for Montblanc. As opposed to "jeweler's overlays" added by third parties, Sarastro overlays are considered licensed factory original to Montblanc and have far greater value and collectibility. A few minor surface scratches and minor dings. The enamel star in the cap top has been replaced with enamel paint which has some pockmarks.	\$5000
7	Montblanc	1936	Model 124E "Rose" in BHR. Certainly a holy grail for Montblanc collectors! GFT. Complete with its unique "pedal" clip! Two-toned, KF "Kugel Fine" nib (Montblanc's "Kugel" nibs are ball-point nibs with flexibility). Slightest signs of ink in the cap, otherwise near mint+. To fully enjoy the beauty and rarity of this pen, please see the close-up photos on our website. Back cover is original Catalog page.	\$10000
8	Montblanc	1946	L-139 PIF in Black. GFT, with outer cap bands in Sterling Silver. Visualated barrel with perfect vertical lines. 3-tone, fine, extra-flexible nib. New-old-stock. Mint.	\$3500



9	Parker	1910	Model 47 Eyedropper-fill. One of the most beautiful of the early Parker pens. Nicknamed the "Pregnant Parker," because of the bulbous design of the alternating pearl and abalone slabs (which are soaked until soft so they can be so shaped). Gold-filled high relief repousse floral cap and barrel bands. Indicia engraved in beautiful Script lettering "L.K." or "L.H." Fine nib. Incredibly beautiful! Has been used, as there is some signs of old ink in the barrel, otherwise near mint+	\$5500
10	Parker	1915	Model 15 eyedropper-fill in Corrugated Abalone barrel and Gold-filled Filigree cap. A rare example, not only because of the corrugated barrel, but also because the barrel is all Abalone and is not alternating with pearl slabs. Medium/fine, triple-flexible nib. An outstanding pen in wonderful condition. Near mint.	\$2750
11	Pelikan	1931	T111 Toledo PIF in 24K gold-plated sleeve with etched pelicans surrounded by fine tooling. This is the ORIGINAL, not the modern reproduction! Martin Lehman (author of the Pelikan book) describes the process of making the binde: the motifs of the body are carved into a relief by using a corrosive, deep parts are then burnished, distinguished motifs were gold-plated and parts of the line drawings then re-engraved by hand. The black hard rubber cap with etched clip (used only on this model) and knurled cap bands (also unique to this model). Amber celluloid barrel. The pen has it's proper unique cap; the clip engraved with a Pelikan motif Fine nib (other nibs available). One minute depression in the metal barrel at the bottom lip (which is so small you probably wouldn't notice unless it's pointed out), otherwise new-old-stock, near mint+.	\$5500
12	Pelikan	1942	Ibis PIF in Lavender Marble. So rare, most folks don't even realize that the IBIS was made in any color except Black! GFT. Amber celluloid visualated barrel. Rare broad, flexible, 14K nib "IBIS." Near mint. A must for any serious Pelikan collector.	\$1500
13	Pelikan	1948	101N PIF in Tortoise with matching cap, barrel and cap top, and contrasting red turning knob. GFT. Green, acrylic, visualated barrel. Fine nib (other nibs available). New-old-stock. Mint.	\$1300
14	Pullman	1932	#2 BF in Grey Pearl Marble. Extremely rare English made pen. The Pullman opens by pushing up the barrel. The hinged crown on the non-removable cap opens and closes automatically. Very high quality. Few were made, fewer survived as folks broke them trying to unscrew the cap! Nib signed "Pullman Made in England 14 CT" (medium, flexible). Shown closed. Near mint+ (could be new-old-stock). Shown both closed and open.	\$3000
15	Waterman	1910	"World's Smallest Safety Pen" eyedropper-fill in Black Hard Rubber. The spiral propelling/repelling unit is operating perfectly! Often called the "Doll Pen" because one rests in Queen Mary's doll house (albeit in the "Cone Cap" rather than the "Safety" model), on the King's Library Table. Just 2" long and less than 3/16" in diameter, this pen was actually produced by Waterman as a way for their salesmen to spend time with potential new accounts. Their salesmen would visit a druggist, jeweler, shop owner, to try to open a new account. The buyer would inevitably say that they didn't need a new pen line and were happy with what they had. The salesman would now offer to show them the "World's Smallest Pen," as long as he was there. This allowed more time and interaction, often resulting in a sale! Waterman then published in their in-house newspaper, <i>Pen Prophet</i> , that they would produce these for sale by their vendors as a special order item only. New-old-stock. Near mint+, and extremely rare, especially in the original "coffin" box! Shown open.	\$5000
16	Waterman	1920	458 lever-fill in BHR with Sterling Silver "Basket-Weave" overlay. A Waterman Holy Grail! Broad/double-broad nib. "J.F.G." lightly engraved into the barrel indicia. Will polish on request. Has been used (signs of ink in the cap), otherwise near mint+.	\$4500
17	Waterman	1920	Model (4)46 Safety eyedropper-fill in BHR with Sterling Silver "Filigree" overlay. Will polish on request. Extra-fine/needle-point nib. Slightest dings to the outer edge of the cap top and has been filled, otherwise near mint+. Unrestored.	\$2500



Vintage Pens - Extraordinary Parker 51

18	Parker	1941	51 Vacumatic-fill Blue Diamond in Cedar Blue. Rare first-year model. Even rarer is the first-year smooth Sterling Silver cap, with the imprints at the cap. Aluminum jewels. Medium nib. A tad of wear to the imprint on the bottom of the blind cap (almost fully readable), otherwise near mint, with no signs of use.	\$900
19 20	Parker	1941	51 Vacumatic-fill Blue Diamond first-year set in Black. First-year Pinstriped sterling silver caps. Almost impossible to find without wear to the rhodium plating on the sterling caps. Aluminum jewels. Medium/fine nib. A tad of wear to the imprint, otherwise new-old-stock. Mint, with no signs of use. Twist-activated pencil.	\$750
21 22	Parker	1944	51 Vacumatic-fill Blue Diamond set in Yellowstone (mustard). 1/8 14K Gold-filled caps in the "Signet" design (panels of 9 pinstriped lines and chevrons on cap band). Double-jeweled. Crisp barrel imprint. Fine nib. No signs of use. Near mint+. Has original patina – will polish on request. Twist-activated pencil.	\$650
23 24	Parker	1946	51 Vacumatic-fill Blue Diamond set in Cordovan Brown. 1/10 14K Gold-filled "Custom" caps in the rare "alternating 2 pinstripes and 2 wavy line" pattern. Double-jeweled. Medium nib. New-old-stock. Mint with crisp imprint. Pencil with original label. Has original patina – will polish on request. Twist-activated pencil.	\$500
25	Parker	1946	51 Vacumatic-fill Blue Diamond in Black. 1/10 16K Gold-filled "Heritage" cap (panels of 9 pinstriped lines and chevrons on cap band) with 14K solid gold clip and bottom jewel. Medium nib. Deep, crisp barrel imprint. Perhaps a surface mar or two viable with a loop, otherwise near mint+.	\$450
26	Parker	1949	51 Aerometric-fill in Sterling Silver Scalloped (Fish Scale) cap & barrel. Excruciatingly rare and strikingly beautiful! Hallmarked: "Parker Argent 1er T." (designating 950 Sterling Silver). Argent was the factory jeweler commissioned jewelry house for overlays produced in France. Medium nib. Near mint+ with no signs of use and a perfectly clear plyglass.	\$4300
27	Parker	1949	51 Aerometric-fill in Burgundy with 18K Scalloped (Fish Scale) "Heirloom" cap. French Hallmarks. Extremely rare to find in 18K. Medium/broad nib. Pen made in England. Slightest imprint wear (fully readable), otherwise near mint+ with no signs of use and a perfectly clear plyglass.	\$2000
28	Parker	1950	51 "Presidential" Aerometric-fill in smooth 14K gold. Rear of cap lip engraved, "LWM." Medium nib. New-old-stock. Mint with perfectly clear plyglass.	\$2000
29	Parker	1950	51 Princess Demi Aerometric-fill in smooth gold-filled. Cap with 12 Rectangular clear glass Crystals. Rare!!! According to Zazove & Shepherd in <i>Parker 51</i> (2004, p. 71), "The rarest Demi in existence...was designed by Don Doman and introduced in the mid west USA. Only a limited number were made and it never went into full production. Furthermore, it did not feature in Parker Advertisements." Different size, shape and color jewels were used, and a sample bag of other of these original jewels are included. Correct with no clip. Fine nib. New-old-stock, complete with the (even rarer) original purple velvet inner and white outer box.	\$2600



30



31



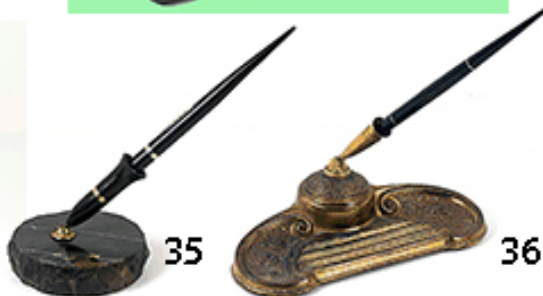
32



33



34

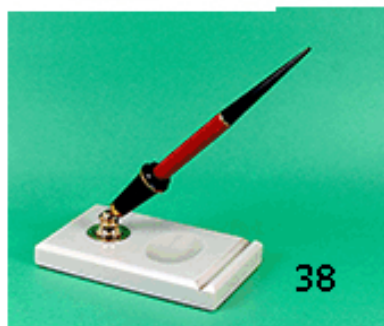


35

36



37



38



39

Vintage Desk Sets - The Perfect Desk Accessory

30	Sheaffer	1929	Lifetime Balance LF Pen - Pencil Desk Set. 10" x 5 1/2" x 1/2" black onyx base with grey & bronze veins. A very substantial base, weighing almost 7 lbs (2.8 kg), with beveled edges, single groove & concave oval recess for storage of paper clips and the like. BHR trumpets with GFT. Matching pen & pencil. The pen trumpet with a red upper edge, to distinguish it from the pencil trumpet. Medium nib. A tad of surface wear and one very tiny edge flake (none of which can be seen when the base is on the desk), otherwise nr mint.	\$275
31	Sheaffer	1956	23 Touchdown-fill Desk Set in Black Glass. 4" x 4" x 3/4" base with rounded sides and edges. Black pen and matching black trumpet. GFT. Brass plaque reading: "Top Sales Award Sheaffer Back to School Merchandising Contest 1956." Medium/broad nib. Some surface wear the the plaque, otherwise near mint.	\$95
32	Parker	1929	Duofold BF Pen - Pencil Desk Set in bronzed metal. 13" x 7" x 2" with slanted face and ornate die stamped floral design and surface storage compartments. Originally with a daily calendar, now re-purposed with note paper. Supplied with about 500 sheets, along with contact information for obtaining refills. BHR trumpets. Burgundy Duofold Jr. pen and pencil. Med nib. Slight wear to the base here and there, otherwise near mint.	\$450
33	Mabie Todd	1927	#4 LF Desk Set in Green & Yellow Onyx. 4 1/2" x 6" x 3/4" rectangular shaped, with rounded edges and a single groove. BHR trumpet with GFT. Black pen with fine, extra-flexible nib. Near mint.	\$150
34	Parker	1927	Duofold Jr. BF Desk Set in Black Glass. 6" x 3 1/2" x 3/4" rectangular shaped, with beveled edges and a single groove.. BHR trumpet. GFT. Mandarin Yellow pen with a medium/broad nib & black taper. Nr mint+	\$200
35	Sheaffer	1929	3 Balance LF Desk Set in Black Onyx with Bronze Veins. Ca. 3 1/4" x 7/8" round base, with deliberately rough edges. An unusual finish. Black trumpet with matching pen and GFT. Medium/fine nib. Near mint+	\$125
36	Waterman	1935	Desk Set in semi-circular fancy repousse gold-plate die-stamped metal with intricate scroll work and three recessed pen storage grooves with "rope" borders. #2 LF Black Desk Pen with NPT. Fine Flexible nib.	\$250
37	Sheaffer	1944	1050 Lifetime Triumph Vac-fill Desk Set in Black Hard Rubber. 8 1/2" x 5 1/4" x 1 1/4", with rounded sides and a center compartment for note paper. Chrome plaque reading: "Sheaffer's Lifetime Desk Sets." Brown striped trumpet & pen. GFT. Medium nib. A small chip in the rubber at the front left, otherwise near mint.	\$150
38	Parker	1925	Duofold Sr. "Big Red" BF Desk Set in White Glass. 6" x 3 1/2" x 3/4" rectangular shaped, with beveled edges, single groove and concave oval recess for storage of paper clips and the like. BHR trumpet with GFT. Cardinal desk pen with "banner" imprint, black taper. Medium/broad nib with a slight italic flair. Near mint+.	\$300
39	Wahl Eversharp	1939	Doric LF Gold Seal Desk Set in Bronze Onyx. 7 1/2" x 4 1/2" x 7/8" Oval ivory base with bronze veins, beveled edge and two grooves. 12 facets on the base and pen and GFT. Fine, extra-flexible nib (which is actually factory engraved: "flexible"). Wahl's "Gold Seal" line was their highest quality. Near mint+.	\$250



Modern Pelikan Pens

Modern Pelikan Pens				
40	Pelikan	1985	M200 Demonstrator PIF in Green Transparent. GPT. Gold-plated fine nib. New-old-stock. Mint	\$200
41	Pelikan	1985	M250 PIF in Black. GPT. 14K, medium nib. New-old-stock. Mint with original label.	\$175
42	Pelikan	1998	1935 Originals of Their Time LE #1676/4000 PIF in Jade. GPT. 18K fine nib. New-old-stock. Mint.	\$575
43	Pelikan	1998	1935 Originals of Their Time LE #1676/4000 PIF in Lapis. GPT. 18K medium nib. New-old-stock. Mint.	\$775
44	Pelikan	2000	M200 PIF in Red Translucent. GPT. Gold-plated nib. New-old-stock. Mint. Two available: (1) Extra-fine nib; (1) Fine nib.	\$125
45	Pelikan	2000	M200 PIF in Green Translucent. GPT. Gold-plated nib. New-old-stock. Mint. Three available: (1) Medium nib; (2) Fine nib.	\$125
46	Pelikan	2000	M200 PIF in Anthracite Translucent. GPT. Gold-plated, fine nib. New-old-stock. Mint.	\$125
47	Pelikan	2000	M200 PIF in Blue Translucent. GPT. Gold-plated, extra-fine nib. New-old-stock. Mint.	\$125
48	Pelikan	2001	M620 PIF "Stockholm City Line Special Edition" in Translucent Blue Marble. Gold-plated trim, including the bands on the cap and barrel. Two-toned 18C, fine nib. New-old-stock. Mint.	\$400
49	Pelikan	2003	M620 PIF "New York City Line Special Edition" in semi-translucent Black & White Marble. Rhodium-plated trim, including the bands on the cap, barrel, and upper lip of the gripping section. Two-toned 18C, fine nib. New-old-stock. Mint.	\$400
50	Pelikan	2004	M620 PIF "Shanghai City Line Special Edition" in Yellow/orange translucent pearl. Gold-plated trim, including the bands on the cap, barrel, and upper lip of the gripping section. Two-toned 18C, fine nib. New-old-stock. Mint.	\$400



51	Pelikan	2004	M620 PIF "Athens City Line Special Edition" in Translucent Blue, Yellow and Gray Pearl. Rhodium-plated trim, including the bands on the cap, barrel, and upper lip of the gripping section. Two-toned 18C, fine nib. New-old-stock. Mint.	\$400
52	Pelikan	2005	M620 PIF "Piazza Navona Famous Places Special Edition" in semi-transparent Amber with Bronze elements. Gold-plated trim, including the bands on the cap, barrel, and upper lip of the gripping section. New-old-stock. Mint. Two available: (1) Two-toned 18C, fine nib; (2) Two-toned 14C, fine nib.	\$400
53	Pelikan	2006	Epoch cartridge-fill in bi-color Titan Silver (anodized aluminum). Silver varnished resin cap. Palladium finished stainless steel nib (extra-fine). Uses two regular or one high-capacity cartridge. Two available: (1) Mint; (1) With a barrel scuff @ \$50. Cartridge included.	\$75
54	Pelikan	2007	M640 "Niagara Falls Wonder of Nations Special Edition" in "Water Blue" with varied Silver stripes. Rhodium-plated trim, including the bands on the cap, barrel, and upper lip of the gripping section. Two-toned 18C, fine nib. New-old-stock. Mint.	\$400
55	Pelikan	2010	M805 PIF in Black. CPT, including the bands on the cap, barrel, and upper lip of the gripping section. Two-toned 18C nib. New-old-stock. Mint. Two available: (1) Fine nib; (1) Extra-fine nib.	\$300
56	Pelikan	2010	M800 PIF Souveran in Blue Striped. Gold-plated trim, including the bands on the cap, barrel, and upper lip of the gripping section. Two-toned 18C, extra-fine nib. New-old-stock. Mint.	\$300
57	Pelikan	2010	M1000 PIF Souveran in Green Striped. Gold-plated trim, including the bands on the cap, barrel, and upper lip of the gripping section. Two-toned 18C, extra-fine nib. New-old-stock. Mint.	\$475
58	Pelikan	2010	M1000 PIF Souveran in Green Striped. Gold-plated trim, including the bands on the cap, barrel, and upper lip of the gripping section. Two-toned 18C nib. New-old-stock. Mint with original label. Two available: (1) Fine nib; (2) Medium nib.	\$475
59	Pelikan	2010	M800 PIF Souveran in Red Striped. Gold-plated trim, including the bands on the cap, barrel, and upper lip of the gripping section. Two-toned 18C, extra-fine nib. New-old-stock. Mint.	\$350



An Array of Modern Pens

60	Aurora	1996	Optima Piston-fill in Auroloide Lapis Blue. GPT, including the wide, Greek Key, cap band. 18K, extra-file nib. New-old-stock. Mint. Long sold out.	\$400
61	Aurora	2001	88 Demonstrator Piston-fill in Clear Resin. LE #1485/1888. Gold-plated trim. 18K, extra-fine nib. New-old-stock. Mint.	\$400
62	Aurora	2001	88 Demonstrator Piston-fill in Clear Resin. LE #0590/1888. Chrome-plated trim. Palladium plated 18K extra-fine nib. New-old-stock. Mint. [Three available: LE #0590/; #1604/; #1394/1888	\$400
63	Aurora	2007	Europa Piston-fill in Yellow and Black Resin. LE#2294. Part of the Aurora LE Continents series (the outline of the particular continent is engraved in the clip top). Visualated barrel. List \$900. GPT. Platinum-plated trim. Blue cabochon in cap top. 8K extra-fine nib. New-old-stock. Mint.	\$450
64	Aurora	2007	Europa PIF in Marbled Resin. LE#5065. Part of the LE Continents series (the outline of the continent is engraved in the clip top). Palladium-plated trim. Visualated barrel. Platinum-plated trim. Blue cabochon in cap top. 18K extra-fine nib. List \$900. New-old-stock. Mint.	\$450
65	Conklin	2002	Nozak Word Gauge Demonstrator 7-M Plunger-fill LE in clear acrylic resin. The Word Gauge allows the user to see how many words he can write with the remaining ink. Limited to 150 pieces. Sterling silver trim. Two-tone 14K fine nib. New-old-stock. Mint. Very hard to find.	\$200
66	Delta	2002	Corona de Aragon LE #125/864 cartridge/converter-fill in Terracotta with Blue Pearl cap. Sterling silver trim (original patina - will polish on request). 18K fine nib. New-old-stock. Mint. Converter included.	\$350
67	Delta	2010	Lucky Special Edition #0596 cartridge/converter-fill in Red with Black cap. GPT. Offers the promise of good fortune. 14K extra-fine nib. New-old-stock. Mint. Converter included.	\$250
68	Delta	2008	Dolcevita Piston-fill in Yellow Pearl with Black cap. CPT. Sterling silver band at the bottom of the pen barrel. The cap screws onto the bottom of the pen for posting. 14K extra-fine nib. New-old-stock. Mint. Buy with matching rollerball below @ \$400.	\$250
69	Delta	2008	Dolcevita Rollerball in Yellow Pearl with Black cap. CPT. Sterling silver band at the bottom of the pen barrel. The cap screws onto the bottom of the pen for posting. New-old-stock. Mint. Buy with matching fountain pen above at \$400.	\$175



70	Lamy	2015	2000 PIF in Black fibreglass reinforced Makrolon. Visualated barrel. Stainless Steel clip. New-old-stock. Mint. Two available: (1) Medium nib; (2) Double-broad nib.	\$100
71	Lamy	1952	Model 27 PIF Demonstrator in clear acrylic. This really doesn't belong in the "modern pen" section, but I put it here because the Model 27 was the predecessor to the Model 2000 (the 2000 was introduced in 1966). The Model 27 is also famous because it was the first hooded-nib pen produced in Germany. GFT. 14K, fine nib. No signs of even being inked. Near mint.	\$325
72 73	Levenger	2005	Sir Isaac Newton cartridge/converter-fill FTN-RBL set in Brass with a fluted, brushed chrome finish. Styled after Newton's cane, the cap tops even have a repousse rosette design emulating the top of the cane. Platinum plated nib (fine). Near mint. Date approximate. Out of production. Converter included. Rollerball for above set.	\$100
74	Monteverde	2010	Monteverde Jewelria Ball Pen in Palladium-plated Sterling Silver (with 12 grams of silver). Date approximate.	\$50
75	Rotring	1995	600 hexagonal cartridge/converter-fill in Matte Chrome. This is the earlier, highly desirable version with the knurled gripping section, cap top and barrel end. The cap top has a built in "nib indicator" (later eliminated), which turns to show the nib size in a window!. The heft and feel is wonderful! Alloy nib (fine). Near mint+. Converter included	\$200
76 77 78	Rotring	2010	Calligraphy "Artpen" set of three cartridge-fill in Black. Each cap marked for the stainless steel nib in the particular pen: M - "1.1" MM - "2.7 MM. Nibs are available in a total of 8 different sizes. New-old-stock. Mint. Second and third pens for the set.	\$60
79	Sensa	2005	Meridian Crystal cartridge/converter-fill in Patented "Plasmium" fluid-filled grip. Discontinued model. Rhodium plated nib (fine). New-old-stock. Mint. Date approximate. Converter included.	\$75
80	Waterford	2000	Grafton cartridge/converter-fill in Green Lacquer on solid Brass. Palladium plated trim. Two-tone 18K fine nib. New-old-stock. Mint. Converter included. List \$170.	\$75
81	Waterman	2010	Man Opera Rollerball in Black Chased Hard Rubber. GPT. New-old-stock. Mint.	\$150



Alphabetical Vintage Pen Section

82	Anonymous	1905	#2 size eyedropper-fill in BHR with Sterling Silver overlay in "Giraffe Skin" pattern. English Hallmarks. Beautiful! 14K medium, flexible nib. A few minor surface scratches noticeable with a loop, otherwise near mint.	\$475
83	Anonymous	1905	#4 size eyedropper-fill in BHR with Sterling Silver "Art Deco" Filigree overlay. 14K #4 Salz nib (fine, extra-flexible). Some overall oxidation of the hard rubber, and cap lip shows a tad of wear, otherwise near mint.	\$200
84 85	Anonymous	1960	Stockbroker Ball Pen - Mechanical Pencil Set in 14K Solid Gold heavy repousse design. These pencils, with their thick lead, were used to mark buy and sell orders as completed, so as to avoid confusion and mistakes. Several manufacturers made specialty stockbroker pencils, including Waterman, Hicks, Aikin Lambert, Wahl and Mabie Todd. This same set has been found signed "Tiffany" (this set is not). Twist-activated. Even more unusual is the matching ball pen! Near mint. Button-activated Ball Pen.	\$375
86	Aikin Lambert	1940	Skywriter LF Silver Pearl Striped. Barrel imprint: ""Skywriter Aikin Lambert Made in U.S.A. by L. E. Waterman Company." NPT. Signed "ALCO" nib (fine, extra-flexible nib). Visualated section. A tad of cap band wear, otherwise near mint.	\$75
87	Bayard	1940	"Superstyl Large" LF in Blue. NPT. Fine nib. French manufacture. Large, attractive pen, with original label on barrel. The Etienne Forin book company, founded in the late 1800's, started producing high quality pens in 1922, under the name Bayard (a famous medieval knight). Bayard stopped producing in 1960, put out of business by the ball pen! Fine nib. New-old-stock. Mint.	\$200
88	Aurora	1975	88P PIF in Black. Gold-filled cap with black enamel inlay in the clip. Semi-hooded, medium nib. A pen as popular in Italy as the Parker 51 was in the US! Visualated barrel. Near mint+	\$195
89	Camel	1937	#6 BF in Silver & Bronze Pearl with Black ends. A short lived (1935 - 1938) Orange, NJ pen manufacturer of high quality pens Their original design was for pens using ink tablets which, when filled with water, made its own ink. One Camel ink pellet was supposed to last for a year. Eventually, they began producing pens which filled with regular liquid ink. Fine, extra-flexible nib. Their 2-Camel logo is on the nib and barrel. Some wear to the barrel logo, otherwise near mint.	\$275
90	Columbus	1917	#2 size Safety eyedropper-fill in 18KG (gold-filled) overlay on BHR. Pattern is chased vertical lines with offsets and three 1/4" repousse "Floral & Vine" bands. Extra-fine, extra-flexible nib. Near mint. Unrestored.	\$175
91	Conway Stewart	1951	27 LF in Cracked Ice. GFT. Medium nib. A rare and highly sought after pattern. New-old-stock. Mint.	\$450



Vintage Pens - Conklin				
92	Conklin	1918	#50 Crescent-fill in Black Chased Hard Rubber. Rare repeating "alternating Chevron and Plain Panel" pattern. Rare, large size. GFT. Medium/fine nib. Near mint.	\$600
93	Conklin	1924	20 Crescent-fill in Black Chased Hard Rubber. Mark Twain's favorite model pen, and the "pen which won't roll off the table." Medium, extra-flexible nib. Perhaps an overall light ambering, otherwise near mint.	\$200
94	Conklin	1924	Extra Long Endura LF in Black. Rare, early Endura (the same size as the earlier "Duragraph"). GFT. Medium/fine nib. Set off beautifully with inlaid red bands. Near mint.	\$850
95 96	Conklin	1926	Endura Medium LF in Sapphire Blue. GFT. Set off beautifully with inlaid red bands. Extra-fine nib. Near mint+. Twist-activated pencil.	\$375
97	Conklin	1926	"Imperial" Endura Medium LF in Blue & Bronze. Quite rare, as it was only manufactured for one year. Set off nicely with inlaid yellow bands. GFT. And a fine, extra-flexible nib to boot!	\$525
98 99	Conklin	1930	Endura Medium LF Set in Black & Bronze. GFT. Set off nicely with inlaid yellow bands. Fine nib. Near mint. Twist-activated pencil.	\$300
100	Conklin	1930	Endura Symetrik LF in Black & Bronze. GFT. Medium/fine nib. Just a tad of imprint wear (fully readable), otherwise near mint.	\$300
101	Conklin	1932	Nozac 12-sided PIF in "Silver V Line" (Silver & Black Herringbone). The Nozac was advertised as "the pen which winds like a watch" and were Conklin's top-of-the-line pens at the time. NPT. Fine, flexible nib (flexible Nozac nibs are rare!). New-old-stock. Mint.	\$375
102	Conklin	1935	Nozac QF Plunger-fill in Green Pearl with Black Stripes. Yes, not all Nozacs are piston-fill! This is a rarer, shorter-lived version, designed as the answer to the Parker Vacumatic and the Sheaffer plunger-fill. "QF" stood for "Quick Filling." Fine, flexible nib. New-old-stock. Mint.	\$350
103	Conklin	1944	Glider Cushion Point LF in Burgundy (rare color). GFT. Visualated section Fine nib (like the Nozac, this is the nib with the "Cheshire Cat Grin" logo). New-old-stock. Mint.	\$250



104	Eureka	1917	#2 size Safety eyedropper-fill in 18K Rolled-gold (gold-filled). Alternating panels of plain and wave chased panels. Filigree band at repousse cap top. Fine knurling above turning knob. Stylized logo on the 14K nib, formed out of the letters "EUR." Fine, flexible nib. Near mint+. Reasonably priced as it is not a major brand.	\$200
105	Ford's Deluxe	1930	#6 size LF in Turquoise. Ford's made 3 models, Ford's, Ford's Jr. and the top-of-the-line Ford's Deluxe (with varieties within models). A large pen manufactured for a slightly smaller #4 nib (medium/fine). Nr mint.	\$475
106	Gold Bond	1928	"Stonite" #8 LF in Lapis with stepped, knurled Yellow ends (beautiful!). Fine nib. Near mint+. Manufactured by the National Pen Co. in Chicago, started in the 1920's (one of the worlds largest pen manufacturers).	\$425
107	Ideal	1915	#2 size Safety ED-fill in 18K gold-filled. Alternating "Wave Chased & Plain Panel" pattern. Foliate repousse clip & cap top. "Ideal" was a name used on Safety Pens by several Italian pen makers. Replacement Mabie Todd nib signed "Anglo American 14K New York" (fine, flexible). Near mint. Unrestored.	\$150
108	John Holland	1929	#6 size "Jewel" LF in Lapis (Blue with White Veins) and rounded, black ends. GFT. Extra-smooth, medium nib. Near mint.	\$550
109	Sutton Pen Co.	1907	"Hicks-Sackett" ED-fill in Black Chased Hard Rubber. Early "jointless" overfeed pen; the nib & feed pull out for filling the barrel, and the feed itself is 4" long! Extra-fine, flexible nib. Advertising for the pen offered it on 30 days free trial and indicated it "...cant leak on your fingers ...It has no screw joint" (see inside back cover for a copy of an advertisement). New-old-stock. Mint.	\$175
110	Mabie Todd	1908	Swan #2 Bayonet Cap eyedropper-fill in BCHR. GF repousse trim. The cap band rotates to engage and release the bayonet device which holds the cap in place. This was important as the pen was designed to hang on a chain. The locking cap prevented the barrel from falling off. Extra-fine, flexible nib. Near mint+	\$350
111 112	Miller's	1935	#4 LF Set in Turquoise with stepped black ends. Beautiful! GFT. A short pen when closed, but the cap posts high on the back of the barrel. In use, the pen is full length 5 3/8". Fine nib. Literature suggests these were manufactured by Conklin, perhaps for a store named "Millers." Near mint+. Twist-activated pencil.	\$400
113	Omas	1951	"361" PIF in Black. Gold filled cap with alternating plain & fine pinstripe panels. An extraordinary nib, designed to write fine, flexible on one side and fine, firm on the other! New-old-stock. Mint.	\$500
114	Pan	1938	"Rapidfill" #4 size plunger-fill in Blue Marble with a long highly visualated barrel. A little known German manufacturer of rare and high quality pens (Zahn, Leser & Co in Manaheim). Removing the open-ended blind cap reveals a bright red knob used to propel and repel the plunger to fill the pen. You can just make out the red knob on the bottom even when the blind cap is in place. Medium/fine, flexible nib. Near mint+.	\$275



Vintage Pens - Montblanc				
115	Montblanc	1929	25 Masterpiece Push knob-fill in Coral Red. GFT. Extra-fine, flexible nib. Some surface scratching and wear to the turning knob imprints, otherwise near mint.	\$850
116	Montblanc	1936	236 PIF in Black. GFT. Visualated barrel. Broad, flexible, italic nib. A tad of trim brassing, otherwise near mint.	\$500
117	Montblanc	1936	232 PIF in Black. GFT. Visualated barrel. Broad, right oblique nib (left foot). Near mint+.	\$300
118	Montblanc	1939	232 PIF in Black. GFT. Visualated barrel. Broad, flexible, italic nib. Near mint.	\$300
119	Montblanc	1940	136 Chef D'Ouevre (the "Meisterstück" made for the French market) PIF in Black. Very rare! Long visualated window. GFT. Double-broad, right oblique, extra-flexible nib (shaped like left foot). One small touch of brassing on the bottom edge of the cap band, and some wear to the imprint on the inner cap (fully readable), otherwise near mint.	\$1000
120	Montblanc	1940	134 PIF in Black. Rare wartime version, with two rings and "Montblanc Meisterstück" engraved into cap band! Visualated window with perfect pinstripping. GF Clip. Two-toned, broad, right oblique nib (shaped like left foot). Near mint+ (could be new-old-stock).	\$700
121	Montblanc	1946	244 PIF in Tiger's Eye (one of Montblanc's most beautiful Celluloids). GFT. Medium/broad, right oblique, flexible nib (shaped like left foot). New-old-stock. Mint.	\$1100
122	Montblanc	1946	136 Meisterstück PIF in Black. Rare, transitional model, with three cap bands and "Meisterstück" on the inner cap. Short barrel window with perfect pinstripping. GFT. Two-toned, medium, flexible nib. New-old-stock. Mint.	\$1200
123	Montblanc	1946	244 in Coral Red (rare). GFT. Medium nib, with a touch of flex. Near mint.	\$600
124	Montblanc	1949	Model 22 twist-activated pencil in BHR. GFT. Clip has one pinpoint ding and some minor scratches, otherwise near mint.	\$75
125	Montblanc	1950	644 PIF in Green Striped (rare). Brushed Silvexa (stainless steel) cap. GFT. Two-toned, medium, flexible full nib (not butterfly). Minor cap surface mars visible under a loop, otherwise near mint.	\$900



126	Montblanc	1950	246 PIF in Grey Pearl Striated (beautiful!). GFT. The largest size this model was made. Medium, oblique nib (shaped like left foot). Near mint+.	\$1600
127	Montblanc	1950	744-N Masterpiece PIF in 1/11 14K Gold-filled "Fully Pinstriped" pattern. Visualated barrel with perfect pinstriping. Two-toned, fine, flexible nib. Near mint. Buy with matching pencil below at \$1300.	\$900
128	Montblanc	1950	772 Pix Repeater Pencil in Gold-filled "Fully Pinstriped" pattern. Near mint. Buy with matching pen above at \$1300..	\$500
129	Montblanc	1950	642-G Masterpiece PIF in Green Striped with Gold-Filled Cap in "Alternating Pinstripe and Plain Panels" pattern. Two-toned, medium, flexible nib. Some fading of the turning knob, otherwise near mint.	\$800
130	Montblanc	1955	72 PIF in Black with gold-plate cap in "Alternating Pinstripe and Plain Panels" pattern. Visualated barrel. Semi-hooded extra-fine/fine nib. Near mint.	\$275
131	Montblanc	1955	1266 PIF in Sterling Silver "Fully Pinstriped" pattern. Broad/double-broad semi-hooded nib. Visualated barrel. Near mint.	\$550
132	Montblanc	1965	149 PIF in Black. Rare, early resin production, with friction fit piston mechanism (rather than the brass or plastic threads), round feed with grooved face, narrow band at the turning knob, and 3-tone 18C nib. Visualated barrel. Medium, EXTRA-FLEXIBLE nib (very rare for a Montblanc). GFT. Near mint.	\$1050
133	Montblanc	1971	124 PIF in Black with gold-filled cap in "Fluted" design. Medium/fine semi-hooded nib. Visualated barrel. New-old-stock. Mint.	\$225
134	Montblanc	1971	300 cartridge/converter-fill in "Fluted" polished chrome-plate. A rare model! Medium/broad semi-hooded nib. Near mint+.	\$250
135	Montblanc	1971	Caressa 422 cartridge/converter-fill in Brown with Silvexa (brushed stainless steel) cap and "checkerboard" like clip. Extra-fine semi-hooded nib. New-old-stock. Mint with original label.	\$150
136	Montblanc	1974	227 PIF in Black with gold-filled heavy line "Guilloche" pattern (deep fluted). Medium/fine semi-hooded nib. Visualated barrel. New-old-stock. Mint.	\$250
137	Montblanc	1975	149 PIF in Black. GFT. Split ebonite feed, black filler threads, flat band at turning knob and 2-tone 14C nib. Visualated barrel. Near mint. Two available: (1) Medium nib; (2) Broad nib.	\$550



Vintage Pens - Early Parker Duofold Pens

138	Parker	1923	Duofold Sr. "Big Red" BF in Red Hard Rubber. The "Medium" imprint was used from 1923 to 1925. GFT. Extra-fine nib. The slightest color difference on the barrel where it is protected by the cap, and the slightest imprint wear (fully readable), otherwise mint. New-old-stock.	\$550
139	Parker	1925	Duofold Sr. BF in Black Hard Rubber. GFT. Small imprint and "Banner" logo. Black ends with perfect knurling. Medium/fine nib. Near mint+	\$400
140	Parker	1926	(Duofold) Lucky Curve Sr. BF set in Green "Permanite." The first color introduced by Parker after cardinal (red). GFT. 1926 models did not have "Duofold" imprinted on the barrel. Parker hedged their bets by protecting the "Duofold" name should the green color have failed in the marketplace. It succeeded, and Parker soon added "Duofold" to the barrel imprint. Medium nib. Two things of note: first, the early examples, like this one, are far more translucent than the later versions, and second, jade Duofolds are almost always found highly discolored – this example has almost perfect color. Black ends with perfect knurling. New-old-stock. Mint. [See matching pencil below].	\$1100
141	Parker	1926	Pencil for above set. Also with the "Parker" imprint in serif type, and not imprinted "Duofold."	Set
142	Parker	1926	Duofold Jr. BF in Red (Cardinal). GFT. Black ends with perfect knurling. Fine, FLEXIBLE nib (very rare for a Duofold)! Near mint+.	\$150
143	Parker	1928	Duofold Sr. "Big Red" BF in Cardinal. GFT. "Banner" imprint. Black ends with perfect knurling. Fine nib. Near mint.	\$400
144	Parker	1930	Duofold Jr. BF in Burgundy (Red Marble). GFT. Fine, FLEXIBLE nib (very rare for a Duofold)! New-old-stock. Mint.	\$350
145	Parker	1929	Duofold Sr. BF Doctor's 3-Piece set with Pen, Pencil and Thermometer Holder in Lapis. GFT. Fine nib. New-old-stock. Mint. So far, this is the only such Doctor's set known to exist.	\$1750
146	Parker	1929	Twist-activated Pencil for above set.	Set
147	Parker	1929	Thermometer Holder for above set. Note the "Red Cross" inlaid into the cap-top. The holder has the original thermometer and the manufacturer's certificate, each with matching serial numbers.	Set



Vintage Pens - Other Parker Pens

148	Parker	1930	Televisor BF in Red Web with Black ends. GFT. Canada manufacture. Visualated section. Medium/broad nib. Near mint.	\$175
149	Parker	1930	Televisor BF in Green Web with Black ends. GFT. Canada manufacture. Visualated barrel. Medium nib. Near mint.	\$175
150	Parker	1930	Televisor BF in Red Web with Black ends. GFT. Canada manufacture. Visualated section. Medium/broad, flexible nib. Near mint.	\$225
151	Parker	1930	Televisor BF in Silver Web with Black ends. NPT. Canada manufacture. Visualated section. Fine, extra-flexible nib. Some trim wear noticeable with a loop, otherwise near mint.	\$200
152	Parker	1938	Royal Challenger Jr. BF in Silver Herringbone with contrasting Black blind cap. NPT, including the unique "stepped" clip. Fine nib. Visualated section. A tad of trim wear (noticeable with a loop), otherwise near mint.	\$200
153	Parker	1938	#2 size BF in Red Marble, with contrasting black ends. GFT. Fine nib. Near mint.	\$150
154	Parker	1938	Twist-activated pencil for above set.	Set
155	Parker	1950	Parkette Hopalong Cassidy Ball Pen in Black. Very rare - manufactured for less than one year! Remove the cap to access the writing point. Bust of Hoppy on the cap top and his signature on the barrel. Engraved guns, horseshoe and steer on the polished chrome cap. If you are my age you grew up watching Hoppy every Friday afternoon! This was Parker's first ball pen, preceding the Jotter by several years. Original refill (dry, of course). Excellent+	\$150
156	Parker	1962	VP ("Very Personal") Fountain Pen - Holy Water Sprinkler - Pencil set. 1/10 12K gold-filled pinstriped caps. The "VP" was Parker's first pen using the triangular section and rotating nib unit, allowing each user to find their perfect writing angle. This evolved into the Parker 75. The glass cartridge unit, designed for the VP, was prone to break, so the model lasted only 2 years. Pen & Sprinkler both with imprinted chi-rho symbol, the Catholic symbol for Christ. Fine nib. New-old-stock. Mint in original box with (2) glass converters.	\$575
157	Parker	1962	Holy Water Sprinkler for above set. With original label.	Set
158	Parker	1962	Twist-activated pencil for above set. With original label	Set



Vintage Pens - Parker 61

159	Parker	1956	61 "Heritage" FIRST YEAR capillary-fill in Grey with silver & yellow gold-filled "Rainbow" design cap and the "1 st Yr" emblem under the clip. This brand new type of filling mechanism features a rolled up, perforated sheet of cellophane inside a metal tube which itself is coated with Teflon (so it sheds all liquid when removed from the ink bottle). GFT. Medium nib. Near mint.	\$250
160	Parker	1956	61 FIRST YEAR capillary-fill in Grey with Brushed Lustraloy (stainless steel) cap and the "1 st Yr" emblem under the clip. GFT. Medium nib. Near mint.	\$200
161	Parker	1956	61 FIRST YEAR capillary-fill in Turquoise with Brushed Lustraloy (stainless steel) cap and the "1 st Yr" emblem under the clip. GFT. Medium nib. Near mint.	\$200
162	Parker	1957	61 Demonstrator capillary-fill in Clear Acrylic. Barrel imprinted "DEMONSTRATOR." 1/10 12K gold-filled pinstriped cap, also hallmarked "61" and "R.D. Made in Canada." GFT. Medium/fine nib. New-old-stock. Mint with no signs of ink in the capillary-fill wick.	\$450
163	Parker	1957	61 "Legacy" capillary-fill in Grey with silver and nickel "Rainbow" design cap. CPT. Fine nib. Near mint+	\$150
164	Parker	1957	61 "Legacy" capillary-fill in Black with silver and nickel "Rainbow" design cap. CPT. Fine nib. Near mint+	\$150
165 166	Parker	1969	61 Signet cartridge/converter-fill set 1/10 12K in Gold-filled. UK manufacture. Tthe capillary-fill mechanism tended to dry and clog, so Parker switched to the cartridge/converter mechanism. Alternating 6 pinstriped panels. Near mint+. Medium/broad nib. Cap-activated Ball Pen.	\$225
167	Parker	1969	61 Signet cartridge/converter-fill in 1/10 12K in Gold-filled. US manufacture. Parker found the capillary-fill mechanism tended to dry and clog, so it switched to the tried and true cartridge/converter mechanism. These are rare today. Alternating 6 pinstriped and plain panels. Medium/fine nib. One tiny pinhead ding in barrel, otherwise near mint+.	\$150
168	Parker	1969	61 Flighter cartridge/converter-fill in brushed Lustraloy. GFT. Medium nib. Near mint+	\$150
169	Parker	1970	61 Custom Mark II Aerometric-fill in Forest Green. Yes, Aerometric-fill 61 - just like a 51. Rare, Australian made model with 2 dots in the shell rather than the arrow. GF cap in the alternating 6 pinstriped and plain panels pattern. Medium nib. New-old-stock. Mint with original chalk mark.	\$225



Vintage Pens - Pelikan				
170	Pelikan	1937	100N PIF in Black. Rare model from Pelikan's Italian plant, with the black binde integrated into the acrylic barrel rather than applied over the barrel. GFT. Visualated barrel. Fine nib. Near mint. Two available, the second with a fine, extra-flexible nib, @ \$700.	\$600
171	Pelikan	1942	100 PIF in Green Pearl. Green acrylic visualated barrel. Smooth turning knob. GFT. Near mint+. Two available: (1) Fine, flexible nib. (2) Medium/broad, oblique nib (shaped like left foot).	\$325
172	Pelikan	1942	100 PIF in Grey Pearl (rare). Green celluloid visualated barrel. Smooth turning knob. GFT. Medium, oblique nib (shaped like left foot). Near mint+.	\$550
173	Pelikan	1950	400 PIF in Brown Striped. GFT. Visualated barrel. Fine nib. Near mint.	\$250
174	Pelikan	1950	400 PIF in Green Striped. GFT. Visualated barrel. Medium/fine nib. Near mint.	\$200
175	Pelikan	1953	100N PIF in Green Pearl with contrasting Black cap. GFT. Green, acrylic, visualated barrel. A tad of trim brassing, otherwise near mint. Two available: (1) Fine, flexible nib; (2) Double-broad, extra-flexible nib.	\$350
176	Pelikan	1953	100N PIF in Black. GFT. Green, acrylic, visualated barrel. Fine nib. New-old-stock. Mint	\$350
177	Pelikan	1955	400N PIF in Green Striped with Green Cap and Green turning knob. Very rare! GFT. Visualated barrel. Broad, oblique nib (shaped like left foot). The green barrel is slightly darker under the cap, otherwise near mint.	\$600
178	Pelikan	1956	400NN PIF in Brown Striped. GFT. Visualated barrel. Medium/fine nib. Near mint.	\$225
179	Pelikan	1956	400NN PIF in Green Striped. GFT. Visualated barrel. Medium/fine nib. New-old-stock. Mint.	\$225
180	Pelikan	1973	400NN made for Pelikan by Merz & Krell PIF in Green Striped with Black cap. Has a shorter barrel than the 400NN and no step between the turning knob and barrel. GFT. Rare, double-vent hole "DEF" nib (extra-fine manifold). Visualated barrel. New-old-stock. Mint.	\$300



Vintage Pens - Sheaffer PFM

181	Sheaffer	1959	PFM I snorkel-fill in Burgundy. Chrome-plated cap band and inlaid Palladium medium/broad nib. Near mint.	\$225
182	Sheaffer	1959	PFM I snorkel-fill set in Blue. Chrome-plated cap band and inlaid Palladium fine nib. New-old-stock. Mint in original box with papers.	\$350
183	Sheaffer	1959	Twist-activated pencil for above set.	Set
184	Sheaffer	1959	PFM I snorkel-fill set in Black Chrome-plated cap band and inlaid Palladium medium nib. Near mint+in original box with papers.	\$300
185	Sheaffer	1959	Twist-activated pencil for above set.	Set
186	Sheaffer	1959	PFM III snorkel-fill in Black. GFT. Medium "Ball," inlaid 14K nib. The "Ball" nib is well suited for both left and right handed writers. Near mint.	\$275
187	Sheaffer	1959	PFM III snorkel-fill in Green (rare color). GFT. Extra-fine, inlaid 14K nib. Near mint.	\$275
188	Sheaffer	1959	PFM III snorkel-fill in Grey (rarest color). GFT. Medium inlaid 14K nib. Near mint.	\$375
189	Sheaffer	1959	PFM V snorkel-fill Set in Burgundy. Gold-filled pinstriped cap. Medium/fine inlaid 14K nib. Near mint.	\$500
190	Sheaffer	1959	Clip-activated ball pen for above set.	Set
191	Sheaffer	1959	PFM V snorkel-fill in Blue (rare color). Gold-filled pinstriped cap. Fine inlaid 14K nib. Near mint.	\$475
192	Sheaffer	1959	PFM V snorkel-fill in Grey (rarest color). Gold-filled pinstriped cap. Medium "Ball," inlaid 14K nib. GFT. The "Ball" nib is well suited for both left and right handed writers. Near mint.	\$575
193	Sheaffer	1959	PFM V Ball Pen in Black. Clip-activated. Gold-filled pinstriped cap. Near mint+	\$125



Vintage Pens - Soennecken Pens

194	Soennecken	1933	Rheingold 1911 BF in Turquoise (Blue & Bronze - beautiful!). A top-of-the-line model. "Starburst S" logo in cap top. GFT. The black sleeve surrounding the button on the bottom of the pen screws into the barrel so the user can depress the button and fill the pen. When in the "down" position the sleeve prevents accidental pushing the button. Fine, flexible, italic nib. Near mint+.	\$1000
195	Soennecken	1933	Rheingold 616 BF in Black. A top-of-the-line model. "Starburst S" logo in cap top. GFT. Visualated barrel. The black sleeve surrounding the button on the bottom of the pen screws into the barrel so the user can depress the white button and fill the pen. When in the "down" position the sleeve prevents accidental pushing the button. Double-broad, right oblique nib (shaped like left foot). A tad of brassing to the center cap band, otherwise near mint+.	\$900
196	Soennecken	1933	Rheingold 915 BF in Black. A top-of-the-line model. "Starburst S" logo in cap top. GFT. Medium nib. The black sleeve surrounding the button on the bottom of the pen screws into the barrel so the user can depress the white button and fill the pen. When in the "down" position the sleeve prevents accidental pushing the button	\$1100
197	Soennecken	1938	507 PIF in Blue Pearl Marble. GFT. Visualated barrel. Medium, flexible, italic nib. The Soennecken Eagle logo is imprinted on the cap top. Near mint.	\$350
198	Soennecken	1938	507 PIF in Blue Pearl Marble. GFT. Visualated barrel. Medium nib. The Soennecken Eagle logo is imprinted on the cap top. Near mint.	\$350
199	Soennecken	1938	510S PIF in Black. GFT, including three raised, round cap bands. Visualated barrel. Double-broad/Stub nib. The Soennecken Eagle logo is imprinted on the cap top. New-old-stock. Mint.	\$275
200	Soennecken	1946	120 PIF in Black Hard Rubber. GFT. Visualated barrel. Extra-smooth, broad, italic nib (alloy). New-old-stock. Mint.	\$300
201	Soennecken	1942	506 PIF in Silver Pearl Web. NPT. Visualated barrel. Broad nib. Near mint.	\$225
202	Soennecken	1946	120 PIF in Black hard Rubber. GFT. Visualated barrel. Medium, italic nib (alloy). New-old-stock. Mint in original box with papers.	\$350



203	Soennecken	1946	118 PIF in Black. GFT. Visualated barrel. Fine, flexible nib. New-old-stock. Mint.	\$275
204	Soennecken	1946	118 PIF in Black. GFT. Visualated barrel. Broad/double-broad, italic nib. Near mint+	\$250
205	Soennecken	1947	105 PIF in Black with Silver Hash Marks. GFT. Visualated barrel. Fine, extra-flexible nib. A touch of trim wear noticeable with a loop, otherwise near mint.	\$275
206	Soennecken	1950	S4 PIF in Burgundy (rare color - almost always found in Black!). GFT. Visualated barrel. Medium nib. New-old-stock. Mint.	\$200
207	Soennecken	1950	412 PIF in Black. GFT. Visualated barrel. Broad, flexible nib. A very early example of Soennecken's famous locking "Click-filler."	\$375
208	Soennecken	1951	333 Extra PIF in Green with Black Pinstriping. GFT. Medium/broad, flexible, italic nib. A bit of cap band brassing, otherwise near mint.	\$300
209	Soennecken	1952	103 PIF in Red Pearl with Black Pinstriping. GFT. Visualated barrel. Broad nib. A touch of band brassing, otherwise near mint.	\$250
210	Soennecken	1952	222 Superior PIF in Silver Pearl Lizard. GFT. Double-broad, italic nib. Has the famous "click" filling mechanism! One small mar in the barrel pattern, otherwise near mint+.	\$400
211	Soennecken	1954	111 Superior PIF in Black. GFT. Visualated barrel. Has the famous "click" filling mechanism! Broad nib. Near mint+	\$500
212	Soennecken	1954	111 Extra PIF in Dark Tortoiseshell Herringbone (one of the rarest colors). GFT. Visualated barrel. Has the famous "click" filling mechanism! Medium, flexible nib. Near mint.	\$1400
213	Soennecken	1954	111 Extra PIF in Black. GFT. Visualated barrel. Has the famous "click" filling mechanism! Broad nib. Near mint+.	\$850
214	Soennecken	1960	222 Superior BF in Black with Silver Hash Marks; late production, no longer featuring the "Click" locking filler mechanism. GFT. Visualated barrel. Broad, right oblique nib. New-old-stock. Mint.	\$500



Vintage Pens - Wahl Eversharp

215	Wahl Eversharp	1927	#2 LF in Rosewood Woodgrain. GFT. Medium, flexible nib (nib actually factory imprinted "Flexible"). Rollerball clip. A tad of high point brassing, otherwise near mint. Wahl's answer to the Waterman 52 Woodgrain.	\$150
216	Wahl Eversharp	1927	#2 LF in Jade. Beautiful design with gold-filled bands not only at the cap lip, but also at both black ends. GFT. Rollerball clip. Fine/extra-fine nib. A touch of high point brassing, otherwise near mint.	\$300
217	Wahl Eversharp	1930	Equipoised Gold Seal Personal Point LF in Black. The "Personal Point" was Wahl's system of interchangeable screw-in nib units, similar to Pelikan and Esterbrook. Nibs were available in no less than 15 different styles, this one being extra-fine/needle-point. GFT. Rollerball clip. Near mint+	\$350
218 219	Wahl Eversharp	1931	Equipoised Gold Seal Personal Point LF set in Tunis. See pen above for information about the "Personal Point." Extra-fine/fine nib. GFT. Rollerball clip. Near mint+. Twist-activated pencil.	\$500
220	Wahl Eversharp	1934	#4 Doric Gold-Seal LF in Garnet (Red Pearl). GFT. Visualated barrel. Extra-fine/fine nib. New-old-stock. Mint.	\$300
221	Wahl Eversharp	1935	#7 Doric Gold-Seal Personal Point plunger-fill in Black. GFT. Visualated barrel with "Reticulated Web" design. Wonderful fine, extra-flexible nib. Near mint+	\$325
222	Wahl Eversharp	1935	#7 Doric Gold-Seal plunger-fill in Black. #7 extra-fine, flexible, adjustable nib, with original shut-off valve. GFT. Visualated barrel with "Reticulated Web" design.	\$325
223	W'Eversharp	1935	#4 Doric Gold-Seal LF in Blue Pearl Web. NPT. Visualated barrel. Medium nib. Near mint	\$300
224 225	Wahl Eversharp	1935	Streamline Light-Weight Bulb-fill Stenographers set in Faceted Silver & Black Web. GFT. Extra-fine nib. Near mint. Twist-activated pencil for above set (actually even rarer than the pen!).	\$425
226	Wahl Eversharp	1936	#2 Oxford Bulb-fill in Red Pearl Swirl. Equipoised-shaped with a long visualated barrel. Deigned to fill the market niche for a moderately priced pen with a large ink capacity, without detracting from their top-of-the-line Doric line. GFT. Extra-fine/fine nib with a touch of flex. Near mint.	\$150
227	W'Eversharp	1949	Symphony LF in Black with Polished Chrome cap. GFT. Medium/fine nib. New-old-stock. Mint.	\$100



Vintage Pens - Waterman Pens

228	Waterman	1910	(4)12 eyedropper-fill in BHR with Sterling Silver "Art Nouveau" overlay. Not Fine Silver, which itself is very rare, but more often found in this model, especially with the overlay recessed into the barrel). Fine, triple-flexible nib! Very nice age patina of the silver (will polish on request). Near mint+	\$500
229	Waterman	1915	0552 ½ LF in Red Ripple with 18K gold-filled overlay in "Fluted" pattern. The overlay pattern is rare, and it being on Red Ripple makes it doubly rare! Fine nib with a touch of flex. French hallmarks. Borders on "User Grade" because of a number of pinpoint surface mars, but it is a rare overlay on Red Ripple, and is priced very reasonably!	\$175
230	Waterman	1915	0552 ½ LF in 18K gold-filled overlay in the rare "Chain Link" pattern. French hallmarks. Fine, extra-flexible nib. New-old-stock. Mint.	\$400
231 232	Waterman	1915	0552 ½ LEC (Long Extended Case) set in Gold-filled "Pansy Panel" pattern. Fine, flexible nib. New-old-stock. Mint, rare and beautiful! Twist-activated pencil.	\$600
233	Waterman	1917	42 Continental Safety eyedropper-fill in 18 KR (gold-filled). Alternating panels of floral & Vine like pattern and wave-chasing. Smooth clip & cap-top. Extra-fine, flexible nib. Near mint.	\$350
234	Waterman	1920	55 LF in Cardinal. GFT. A wonderfully responsive, fine, extra-flexible nib. Deep, crisp barrel imprint. A tad of brassing here and there on the cap band, otherwise near mint.	\$500
235	Waterman	1925	552 ½ lever-fill in BHR with Smooth 14K overlay. Barrel engraved "Presented to W.N.C. Cattone by Roma Lodge No. 854.F. & A. M. June 14, 1930." Extra-fine/needle point nib, marked "Account." Near mint+	\$600
236	Waterman	1925	52V LF in Red Ripple. GFT. Fine, extra-flexible nib. Imprint wear (not fully readable), otherwise near mint.	\$125
237	Waterman	1925	452 LF Half-covered Smooth sterling Silver Overlay on BHR. Fine, flexible nib. Comes with original signed Waterman NP accommodation clip. Near mint+. Will polish on request.	\$275
238	Waterman	1927	42 "Continental Safety" eyedropper-fill in 18K gold-filled over BHR. The barrel has alternating plain & lightly engine-turned wave chased panels. The cap in high relief scroll work with a full ladies profile face on opposite side of clip. Repousse clip and crown. Fine, extra-flexible nib. Near mint+	\$600



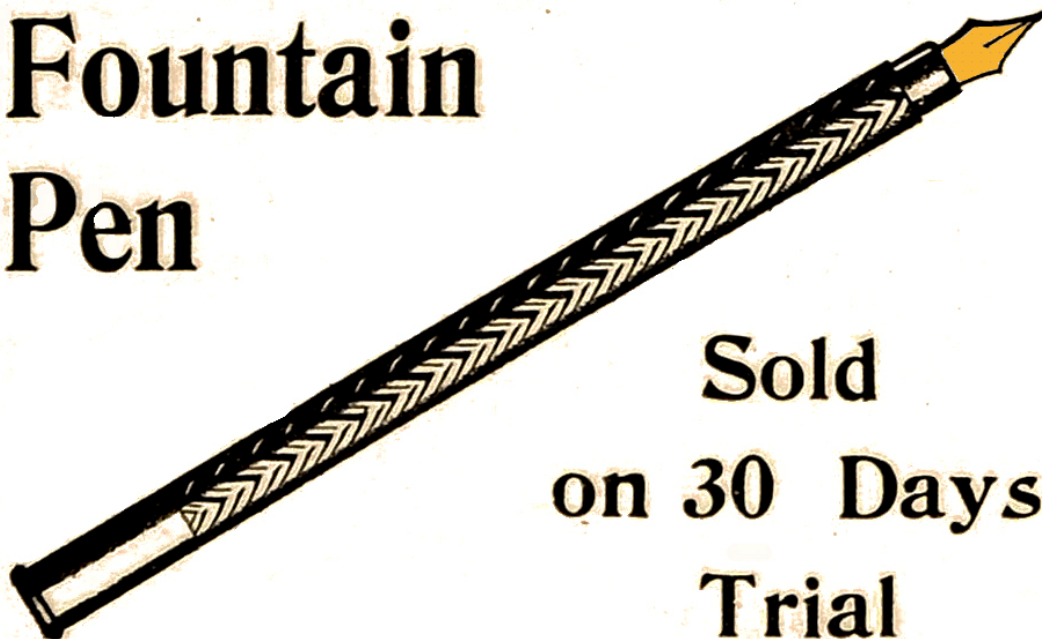
239	Waterman	1927	42 "Continental Safety" eyedropper-fill in 18K gold-filled over BHR. Cap and barrel in "Checkerboard" pattern formed within plain and barley patterns. Extra-fine/needle point, flexible nib. Appears to be new-old-stock. Mint.	\$450
240	Waterman	1927	7 LF in Red Ripple with a "Blue" color-coded nib and cap band. Blue designated a stub, italic nib which, according to Waterman, was "popular with rapid writers." A little imprint wear (fully readable), otherwise near mint.	\$750
241	Waterman	1928	0552 LF in Gold-Filled "Night & Day" pattern over BHR. Much rarer than the sterling silver model (which is pretty rare itself). Extra-fine/needlepoint nib. Some edge brassing and a few surface scratches (noticeable with a loop), otherwise near mint.	\$1000
242	Waterman	1928	94 LF in Olive Ripple. GFT. A rare color. As other pen manufacturers were switching from hard rubber to celluloid, Waterman stayed with rubber as they has spent a fortune perfecting colored rubber. Unfortunately, it couldn't effectively compete with celluloid and was soon discontinued. shortly afterwards with the introduction of the Patrician! Fine, extra-flexible nib. Near mint.	\$500
243	Waterman	1928	52V LV in Olive Ripple. GFT. See above for more info. Fine, extra-flexible, italic nib. Near mint.	\$350
244	Waterman	1930	7 LF in Black with a "Red" color-coded nib and bottom barrel insert. "Red" designated a "Standard, medium, semi-flexible" nib. Beautiful Art-Deco design! Near mint.	\$400
245	Waterman	1939	5116 Ink-Vue Demonstrator (rare) with Amber celluloid barrel and Black cap. GFT. The lever hinges in the middle and is then pumped several times to completely fill the barrel. Waterman's answer to the Parker Vacumatic. Medium nib. A few dings in the plastic, otherwise near mint.	\$400
246	Waterman	1939	Model 403 (rare, streamlined model) LF in Sterling Silver "Basket-weave" overlay on BHR. Fine nib. Indicia engraved "E.J. Corillio." Near mint. Has original patina - will polish on request.	\$515
247	Waterman	1939	Model 403 (rare) LF in Sterling Silver "Basket-weave" overlay on Black Hard Rubber. Medium, italic nib. Indicia engraved in script "R.O.L." Near mint. Original patina - will polish on request.	\$515
248	Waterman	1941	Emblem Oversize LF in Black. Waterman's largest pen at the time. GFT. Medium nib. A tad of lever brassing, otherwise near mint.	\$350



Wonderful Vintage Ring-top Pens

249	Conklin	1920	#2 Crescent-fill ring-top in gold-filled over BHR. "4-Leaf Filigree" pattern. Fine nib. Near mint.	\$300
250	Diamond Point	1925	#2 LF ring-top in Jade with White bands at Black ends. GFT, including a very wide cap band. Medium nib. A hint of discolor at the ends, otherwise near mint.	\$65
251	Mabie Todd	1915	#2 Eyedropper-fill in gold-filled "Gothic" pattern (checkerboard panels). Indicia engraved, "E.F.R." Wonderful fine, extra-flexible nib. New-old-stock. Mint.	\$75
252	Mabie Todd	1915	Twist-activated pencil for above set.	Set
253	Conway Stewart	1930	645 Dinkie Major LF ring-top in Red mottled Hard Rubber (very rare). GFT. Medium, flexible nib. A little lever brassing, otherwise near mint.	\$150
254	C'Stewart	1951	526 Dinkie LF ring-top in "Apple" Green (rare). GFT. Fine nib. New-old-stock. Mint.	\$95
255	Parker	1917	#16 Jack Knife Safety BF ring-top in gold-filled on Black Hard Rubber "Filigree" pattern. Inner cap with raised repousse floral design. Extra-fine nib. A tad of wear here and there, noticeable with a loop, otherwise near mint.	\$425
256	Security	1928	#500 Twist-fill ring-top in Red Mottled Hard Rubber. This model came without the check protector. Yellow casein cap-top. GFT. Medium/fine, extra-flexible nib. Near mint.	\$125
257	Wahl Eversharp	1920	#0 LF ring-top set in gold-filled "Gothic" pattern (checkerboard panels). The smallest set made by Wahl, perfect for the occasional note. Rare and unusual! Medium/fine, flexible nib. Nr mint.	\$85
258	W'Eversharp	1920	Twist-activated pencil for above set.	Set
259	Waterman	1920	452 ½V LF ring-top in Smooth Sterling Silver. Much rarer than the models with patterns! Fine nib. Plenty of age patina (will polish on request). Near mint.	\$200
260	Waterman	1922	52 ½V ring-top in Black Chased Hard Rubber. NPT. Medium, extra-flexible nib. Near mint.	\$65

This Non-Leaking Fountain Pen



Sold
on 30 Days'
Trial

Does Your Fountain Pen Annoy You?

Does the joint ooze ink, gum or stick? Does the feed fail at critical times? Is the pen always getting out of order?

Why Not Try a Pen That's Free From Troubles?

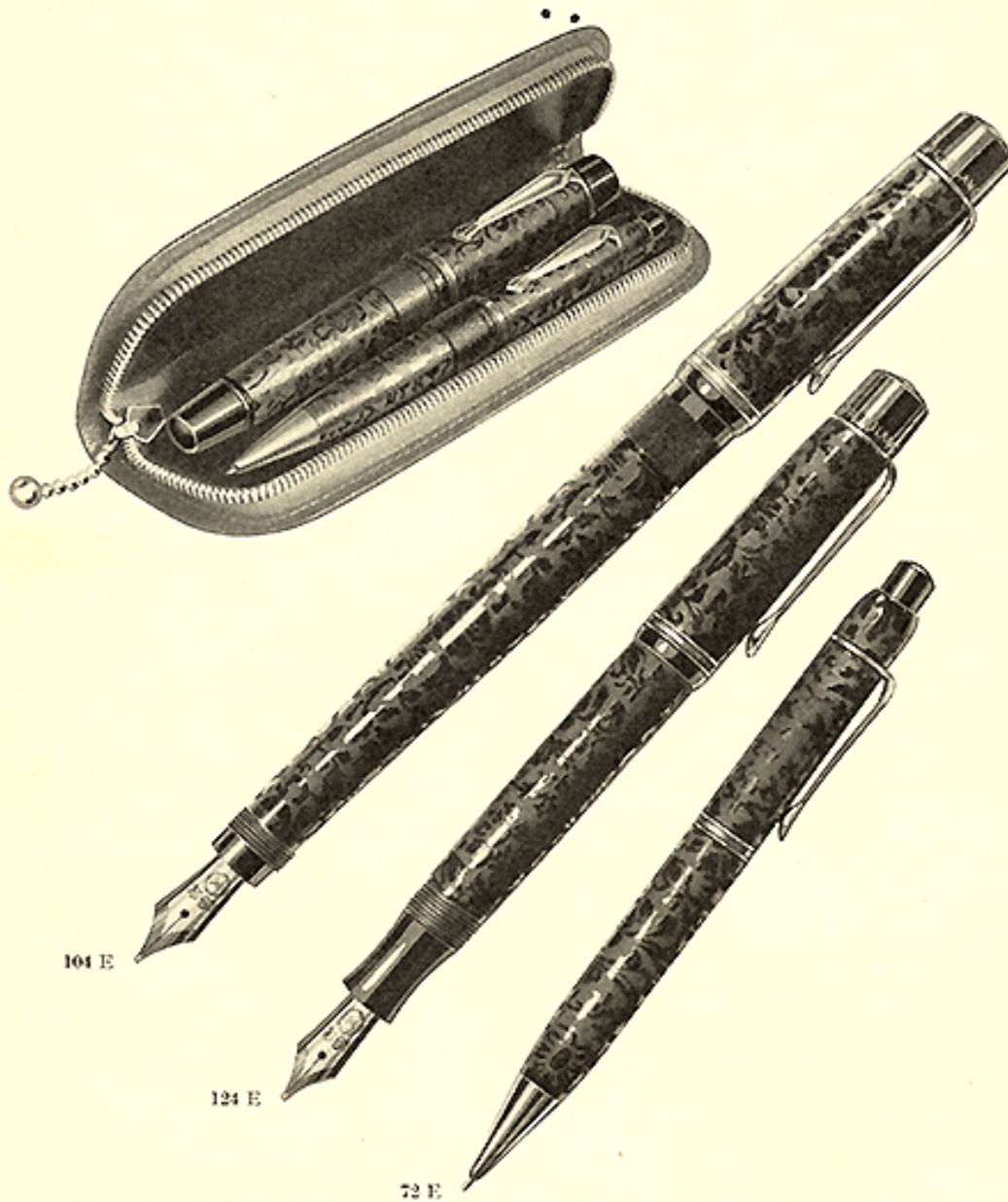
Get a "**Hicks-Sackett**" Pen, that pleases at the start, that pleases just as well for years to come because it's simple and made to last; that doesn't get out of order, and above everything else, *can't* leak on your fingers. It has no screw joint. There are other good features, too. Send \$2.50 for pen with chased hard rubber barrel and solid 14 kt. gold point. After thirty days, in which you may test and compare it as you will with any and every other pen, it will be your privilege to say whether you agree with us that you have a pen far ahead of the ordinary kinds or whether you will write us, "I want my money back."

Illustrated booklet FREE if this paper is mentioned.

Sutton Pen Co., 15-21 William St., New York City

Agents invited to write for special proposition.

MONTBLANC - Extraklasse



Nr.	Länge schreibfertig	Länge geschlossen
104 E Sicherheitshalter	18,5 cm	13 cm
124 E Stofffüller	15 cm	12,5 cm
72 E Pix Patent Druckstift	12 cm	

In Rosenmuster mit dazu passendem Pix Stift