

Gary & Myrna Lehrer's

Quarterly Illustrated Vintage Pen Catalog

garylehrer@aol.com

Issue #74 - March 2015

See the Catalog in full color on the web site. For about a week you'll need a password for access (be sure to also see what's remaining from previous Catalogs).

WEBSITE PASSWORD FOR CATALOG #74: (www.gopens.com): STAR

Catalog #72 Features:

- **Featured: Parker Vacumatic & Waterman Hard Rubber**
- **Vintage Montblanc; Desk Sets; Crocker Pens**
- **Some incredible vintage Montblanc, Parker & Waterman**
- **20+ Manufacturers Represented**
- **Rare Parker 38 "Snake" and Parker "Black Giant"**
- **Over 265 Items**

Contact Information:

- **Tel: (203) 389-5295**
- **email: garylehrer@aol.com**
- **Fax: (859) 909-1882**
- **Call until 9:00 PM Eastern Time; Fax or email anytime**
- **We check our email often**

Subscription Expired: ● **A (4) on your mailing label means your subscription has expired. "Internet Only" renewal is \$10. "Hard Copy" Renewal is \$25 US and \$35 Foreign (see website for details). Received a sample copy? Don't forget to subscribe!**

Please see inside front page for abbreviations and other important information!

Gary & Myrna Lehrer 16 Mulberry Road Woodbridge, CT 06525-1717



Here's Some Other Important Information:

GIFT CERTIFICATES: Available in any denomination. No extra cost! No expiration!

CONSIGNMENT - PEN PURCHASES: We usually accept a small number of consignments. Ask about consignment rates (we reserve the right to turn down consignments), or see the website for details. We are also always looking to purchase one pen or entire collections.

ABBREVIATIONS:

Mint - No sign of use	Fine - Used, parts show wear
Near Mint - Slightest signs of use	Good - Well used, imprints may be almost gone, plating wear
Excellent - Imprints good, writes well, looks great	Fair - A parts pen
Fine+ - One of the following: some brassing, some darkening, or some wear	

LF - Lever Filler	HR - Hard Rubber
PF - Plunger Filler (ie. Sheaffer)	BCHR - Black Chased Hard Rubber
PIF - Piston Filler (ie. Montblanc)	RBHR - Red & Black Hard Rubber
PK - Push Knob Filler (Montblanc)	CF - Cartridge Filler
GPT - Gold Plated Trim	ED - Eyedropper Filler
GFT - Gold Filled Trim	CPT - Chrome Plated Trim
BF - Button Filler	NPT - Nickel Plated Trim
CRF - Crescent Filler (Conklin)	

RETURN PRIVILEGES, POSTAGE and WARRANTIES (see website for complete information):

You have five (5) days from receipt of a pen to return it for any reason. All pens are restored unless specifically noted in the description. **Postage & Insurance are additional.** All pens are shipped insured. For shipments in the US we prefer USPS, and outside the US we prefer Express Mail International. We will of course use other shippers at customer request.

Generally, our pens are warranted for 90 days. Unfortunately, we sometimes cannot restore some modern pens (post-1970) due to lack of parts or inaccessibility to the mechanisms (many modern pen companies manufacturer their pens with the plan that no restoration will ever be done). If we can't restore the pen, you *may* still have some recourse through the manufacturer or distributor. We can provide contact information for you on request. Thank you for your understanding.

NIBS:

When reading item descriptions, please assume each nib is original for its pen, and is 14K gold, unless otherwise noted.

Check out our Website - www.gopens.com

See our website for:

- ~Catalog photos in color, plus a downloadable color copy you can print at home.
- ~Catalogs currently on "10% Off Sale."
- ~Information about our book "*Waterman Past & Present - The First Six Decades*"
- ~Protective Shipping & Storage tubes; White Slotted Storage boxes.
- ~Glass Covered Storage/Display Boxes; Slotted Trays for chests, boxes and drawers.
- ~Subscription information.
- ~Historical Catalogs for reference.
- ~Information on our Warrantees.
- ~Our Privacy Policy.
- ~Secure Credit Card Submission.
- ~Customer Feedback.
- ~Our Blog
- ~And more...



Extraordinary Pens

1	A.A. Waterman	1905	#3 Twist-fill Cone Cap in Gold-filled "Filigree" overlay on BHR. The filigree is reminiscent of the "Parker 16" and may also have been done by Heath of New York. Indicia engraved in script, "AW." Fine, triple-flex nib. A ding or two in the cap derby and some upper cap edge brassing, otherwise near mint in original box.	\$800
2 3	Montblanc	1930	L-30 Meisterstuck Push-Knob-fill set in Black and Pearl. One of the rarest of the Montblanc Celluloids, in a top-of-the-line model. Extremely rare! GFT. Broad, oblique, italic nib (shaped like left foot). Near mint. Twist-activated pencil for above set.	\$4000
4	Montblanc	1935	322 button-fill in Lapis. Outstandingly rare and beautiful! GFT. Medium/broad nib. The cap is a shade brighter than the barrel (the color is better than 99% found), otherwise near mint.	\$1500
5	Montblanc	1950	144 Meisterstuck PIF in Light Green Straight Striped. Multi-times rarer than the green striped! GFT. Broad, oblique, italic nib (shaped like left foot). Near mint.	\$2000
6	Montblanc	1914	2F Rouge et Noir Safety eyedropper-fill in Black Hard Rubber with Red Star on cap-top. Replacement, but correct vintage "Warranted 14 ct 2" nib (medium, extra-flexible). Cap and barrel imprints are deep and crisp. Near mint+ with no signs of ink or use. Unrestored.	\$2200
7	Montblanc	1950	146 Masterpiece PIF in Green Striped. GFT. Perfect color! Two-toned, medium, flexible nib. Slight wear to the nib plating, otherwise near mint+. See matching pencil below.	\$2100
8	Montblanc	1950	172 Masterpiece button-activated pencil in Green Striped. GFT. Perfect color. Matches pencil above. Near mint+ (could be new-old-stock). Buy with pen above @\$325	\$400
9	Parker	1908	38 "Snake" eyedropper-fill in Gold-filled on BHR. Parker ordered George Heath, a skilled designer of jewelry, to cover a pen with a snake motif, with the motivation of having something eye striking to get his salesmen's foot into the door of a retailer. The earliest examples have a round cap top and an imprint, just like on this one, which reads "Parker Fountain Pen Pat. 6-30-91 1-3-05 Design Patent Pending." Even rarer to be found with a ring-top, this being only the second one known. Fine nib. Near mint+. This could be the epitome of your collection! Near mint.	\$15000



10	Parker	1918	"Black Giant" eyedropper-fill in Black Hard Rubber. Parker's first "Giant," the "Red Giant," introduced in 1909 at \$10, failed because the cap was too brittle and Parker was losing too much money honoring their warrantees. This was less of a problem with the "Black Giant," introduced soon afterwards. These are found clipless, with a "split" clip (open in the back), and a full washer clip, such as this example. They also are found with and without a cap imprint (this example is without). The pen also came in two lengths; this being the longer version. Huge #12 fine nib). Rare, beautiful and very desirable! Crisp barrel imprint with no wear at all. Near mint+	\$1500
11	Parker	1905	Unusual filling mechanism. Model 25 "Click-filler" in Black Hard Rubber. NP filler unit. Pressing the top of a bar releases the mechanism which is pressed to fill the bladder. After filling, the user locks the mechanism back in place. Doing so produces a distinctive "click" as it locks. Medium/fine, extra-flexible nib. New-old-stock. Mint.	\$1500
12	John Holland	1906	Unusual filling mechanism. Model 52 "Pull-Filler" in gold-fill Repousse on BHR. Circles of high repousse roses on an etched "bark" background. Exquisitely beautiful! George Parker was a Holland distributor until he started his own pen company by improving on the Holland feed! Medium/fine, extra-flexible nib. Near mint in original velvet lined, brown leather box (box shows wear).	\$2000
13	Parker	1927	Duofold Sr. BF in Mandarin Yellow. GFT. Absolutely beautiful with a deep, crisp banner imprint. Except for the slightest shade of color difference where the barrel was covered by the cap, near mint+.	\$1500
14	Pelikan	1942	101N PIF in Lizard. Light amber barrel. GFT. Medium/fine, flexible nib. Near mint.	\$1600
15	Waterman	1899	222 Taper Cap eyedropper-fill in half-covered Sterling Silver Repousse "Chased" pattern. Medium, extra-flex nib. Very rare! Indicia beautifully engraved "LN" in script. Deep, crisp cap imprint. Near mint+ (could be new-old-stock).	\$1000
16	Waterman	1930	Patrician LF in Moss Agate. The pride of the Waterman pen line! GFT. Medium, flexible nib! Near mint.	1650
17	Waterman	1929	Patrician LF in Black Hard Rubber. GFT. This one has a tad of wear to the imprint (fully readable) but the medium/fine, extra-flexible, italic nib is my favorite and writes like a dream!	\$1350
18	Waterman	1925	58 LF in Woodgrain Hard Rubber. Much rarer than Red Ripple! GFT. Extra-smooth, broad, flexible nib. New-old-stock. Mint. You'll never find a nicer example.	\$1850
19	Waterman	1930	494 LF in sterling silver "Bay Leaf" overlay. One of Waterman's most beautiful patterns. Rare. Extra-fine, extra-flexible nib. Barrel indicia engraved "J.J.S." Outstanding near mint+ condition.	\$2200



Featured Vintage Pens - Parker Vacumatic

20	Parker	1935	"Standard" Vacumatic Set in Silver Laminated. NPT. Double-jeweled model. Visualated barrel. "Lock-down" filler unit. Medium nib. Near mint+.	\$325
21	Parker	1935	Twist-activated pencil for above set. Near mint.	Set
22	Parker	1936	"Standard" Vacumatic in Silver Laminated. NPT. Double-jeweled model. Visualated barrel. "Lock-down" filler unit. Two-tone, medium nib. Near mint.	\$275
23	Parker	1937	Oversize Vacumatic in Green Laminated. GFT. Visualated barrel. "Lock-down" filler unit. Two-toned, broad nib. Near mint+ (could be new-old-stock).	\$575
24	Parker	1937	Sr. Maxima Vacumatic in Silver Laminated. GFT. Visualated barrel. Double-jeweled model. Two-toned fine, italic nib. Some wear to the right side of the barrel imprint wear, otherwise near mint.	\$375
25	Parker	1939	Sr. Maxima Vacumatic in Red Laminated (rare). GFT. Visualated barrel. Double-jeweled model. Two-toned fine nib. Near mint.	\$800
26	Parker	1939	"Standard" Vacumatic in Green Laminated. Clip has "Star" logo rather than the "Blue Diamond." Parker tried to trademark the use of the star, were denied, and switched to the blue diamond. GFT. Visualated barrel. Two-toned, fine nib. Near mint+. See matching pencil below.	\$400
27	Parker	1936	"Standard" Vacumatic twist-operated Pencil in Green Laminated. GFT. Near mint. Matches pen above. Buy with pen above @ \$50.	\$75
28	Parker	1940	Sr. Maxima Vacumatic in Green Laminated. GFT. Visualated barrel. Double-jeweled model. Two-toned, fine nib. Near mint.	\$550
29	Parker	1940	Sr. Maxima Vacumatic in Black Laminated. Rare model, produced for Parker by the Chris Olson Pen Co. in Denmark. Short lived. GFT. Visualated barrel. Two-tone, medium nib. Near mint.	\$400
30	Parker	1940	Sr. Maxima Vacumatic in Blue Laminated. Along with the normal barrel imprint, it reads "Marca Registrada" (made for the Spanish market). GFT. Visualated barrel. Fine nib. Near mint.	\$1000



31	Parker	1940	Major Vacumatic in Green Laminated. GFT. Double-jeweled model. Two-toned, medium nib. Visualated barrel. Near mint+. See matching pencil below.	\$175
32	Parker	1941	Major Vacumatic twist-activated Pencil in Green Laminated. GFT. Near Mint. Matches pen above. Buy with pen above @ \$50.	\$75
33	Parker	1940	Major Vacumatic Deluxe in Golden Laminated. GFT. Made for jewelry stores, so they didn't compete with the same items in pen shops. Two-toned, med/fine nib. Visualated barrel. Near mint+	\$225
34	Parker	1940	Major Vacumatic in Silver Laminated. GFT. Double-jeweled model. Visualated barrel. Two-toned, medium nib. Date code worn off of barrel, otherwise near mint.	\$125
35	Parker	1940	Major Vacumatic in Golden Laminated. GFT. Double-jeweled model. Visualated barrel. Two-toned, medium nib. Some wear to the date code and "Made in USA" portion of the barrel imprint, otherwise near mint.	\$125
36	Parker	1940	Junior Vacumatic in Golden Laminated. GFT. Double-jeweled model. The "Junior" was the same size as the "Major" but had different cap bands and came without the guarantee. Medium/fine nib. User grade, with imprint wear (fully readable) and minor surface scratches. Excellent.	\$100
37	Parker	1937	Vacumatic Junior Pencil in Golden Laminated. GFT. Matches pens above and item #40 below. Buy with matching pen @ \$35.	\$50
38	Parker	1940	Duofold Jr. Vacumatic Set in Green, Bronze and Black Striped. The "Junior" was the same size as the standard but had different cap bands and came without the guarantee. Medium/fine nib. A tad of wear to the center of the imprint (fully readable) otherwise near mint.	\$175
39	Parker	1940	Twist-activated pencil for above set.	Set
40	Parker	1941	Major Vacumatic in Golden Laminated. GFT. Double-jeweled model. Visualated barrel. Two-toned nib. Near mint. Two available; (1) Medium nib; (1) Medium/broad nib.	\$200
41	Parker	1941	Sr. Deluxe Duofold Vacumatic in Green, Bronze and Black Striped. Rarest model, with 3 cap bands, the middle band being wider. GFT. Double-jeweled. Visualated barrel. Fine nib. Near mint.	\$225



42	Parker	1941	Major Vacumatic Deluxe in Blue Laminated. The Deluxe models have wider cap bands. They were made for jewelry stores, so they didn't compete with the same items sold in pen shops. GFT. Double-jeweled model. Visualated barrel. Medium nib. Near mint.	\$225
43	Parker	1941	Vacumatic Junior in Golden Shadow Wave (rare). GFT. Double-jeweled model. Visualated barrel. Extra-fine nib. Near mint. See matching pencil below.	\$250
44	Parker	1938	Vacumatic Junior Pencil in Golden Shadow Wave (rare). 1938 was the year of introduction for the color. GFT. Near mint. Buy with matching pen above @ \$50.	\$75
45	Parker	1942	Junior Vacumatic in Green Laminated. The "Junior" was the same size as the "Major" but had different cap bands and came without the guarantee. GFT. Visualated barrel. Medium nib. Near mint. See matching pencil below.	\$110
46	Parker	1945	Vacumatic Junior twist-activated pencil in Green Laminated. GFT. Matches pen above. Buy with pen above @ \$35.	\$50
47 48	Parker	1942	Duofold Vacumatic Set in Red, Silver and Black Striped. GFT, including the wide chased cap bands. Visualated barrel. Fine nib. Near mint. Twist-activated pencil for above set.	\$250
49	Parker	1943	Vacumatic Debutante in Golden Laminated. 1943 models are very rare, as most of the factory production had switched from pens to the war effort. Very few Vacumatics and 51s were produced, and most of those went to the War Department. GFT. Two-toned, fine nib. A smaller model, designed with a cap band chased with arrows. The "Sub-Deb" was a lower price point pen, with a narrower, plain band. Visualated barrel. Near mint.	\$95
50	Parker	1944	Sr. Duofold Vacumatic in Red, Silver and Black Striped. GFT. Two-toned, medium nib. Visualated barrel. Near mint+	\$175
51	Parker	1944	Sr. Duofold Vacumatic in Green, Bronze and Black Striped. GFT. Visualated barrel. Medium nib. Near mint+. See matching pencil below.	\$175
52	Parker	1945	Duofold Vacumatic twist-activated pencil in Green, Bronze and Black Striped. GFT. Matches pen above. Near mint. Buy with pen above @ \$35.	\$50



53	Parker	1944	Major Vacumatic in Blue Laminated. GFT. Visualated barrel. Near mint+. Four available; (1) 1944: Two-tone fine nib; (2) 1945: Medium nib; (1) 1945: Medium/fine nib. See matching pencil below.	\$150
54	Parker	1947	Major Vacumatic twist-activated pencil in Blue Laminated. GFT. Near mint. Matches pen above. Buy with pen above @ \$40.	\$65
55	Parker	1945	Sr. Duofold Vacumatic in Green, Bronze and Black Striped. GFT. Medium/fine nib. Visualated barrel. Near mint+	\$175
56	Parker	1945	Sr. Duofold Vacumatic in Blue, Silver & Black Striped. GFT. Med nib. Visualated barrel. Near mint+	\$175
57	Parker	1945	Major Vacumatic in Golden Laminated. GFT. Medium/fine nib. Visualated barrel. Near mint+	\$125
58	Parker	1945	Major Vacumatic in Green Laminated. GFT. Medium/fine nib. Visualated barrel. Near mint+. Four available: (1) 1945: Medium nib; (1) 1945: Medium/fine nib; (1) 1947: Medium nib; (1) 1949: Medium nib. See matching pencil below.	\$150
59	Parker	1943	Major Vacumatic Pencil in Green Laminated. GFT. Matches pens above. Buy with matching pen @ \$50. Two available	\$75
60	Parker	1945	Major Vacumatic in Black Laminated. GFT. Medium nib. Unusual highly visualated barrel. New-old-stock. Mint	\$175
61	Parker	1946	Vacumatic Jr. in Golden Laminated. GFT. Medium/fine nib. Near mint with excellent barrel transparency. See matching pencil, item #44 above.	\$110
62	Parker	1947	Junior Vacumatic in Blue Laminated. GFT. Double-jeweled model. The "Junior" was the same size as the "Major" but had different cap bands and came without the guarantee. Visualated barrel. Medium nib. Near mint+	\$125



Featured - Vintage Waterman Hard Rubber Pens

63	Waterman	1907	14 eyedropper-fill "Cone Cap" (no cap threads) in Black Chased Hard Rubber, with two GF Repousse barrel bands. Extra-fine, triple-flexible nib! Near mint.	\$300
64	Waterman	1907	12 ½ eyedropper-fill in Black Chased Hard Rubber. Fine, extra-flexible nib. New-old-stock. Mint.	\$125
65	Waterman	1910	Unusual filling mechanism. 15SF "Sleeve-filler" in Black Chased Hard Rubber. Between the "Pump-filler" and "Coin-filler" Waterman produced the Sleeve-filler in 1909 or 1910. A sliding sleeve on the barrel is slid downward to reveal a press bar used to fill the pen. Rare. Also with a rare 18K nib (extra-fine). NPT. Near mint+	\$475
66	Waterman	1910	45 Safety eyedropper-fill in Black Chased Hard Rubber. Stub, italic nib. Near mint. Add \$50 for an original Waterman NP signed accommodation clip.	\$250
67	Waterman	1910	42 Safety eyedropper-fill in Red Ripple Hard Rubber. Fine, flexible nib. New-old-stock. Mint. Add \$50 for an original Waterman NP signed accommodation clip.	\$400
68	Waterman	1910	12 eyedropper-fill "Cone Cap" (no cap threads) in Black Chased Hard Rubber, with two GF Repousse barrel bands. Fine, triple-flexible nib! Near mint.	\$275
69	Waterman	1920	52 LF in Black Chased Hard Rubber. NPT. Fine, flexible nib. New-old-stock. Mint.	\$175
70	Waterman	1924	56 LF in Black Chased Hard Rubber. NPT. Medium, flexible, italic nib. Near mint.	\$295
71	Waterman	1924	755 LF in Black Chased Hard Rubber. 14K solid gold trim. Barrel band eng: "Pres. Cosmos Club 1927-1928 W.C.B." From their website (https://www.cosmosclub.org/Default.aspx?pageid=31). <i>"The Cosmos Club is a private social club, incorporated in Washington, D.C. in 1878 by men distinguished in science, literature and the arts. In June, 1988 the Club voted to welcome women as members. Among its members, over the years, have been three Presidents, two Vice Presidents, a dozen Supreme Court justices, 36 Nobel Prize winners, 61 Pulitzer Prize winners and 55 recipients of the Presidential Medal of Freedom."</i> Fine nib, with a touch of flex. Some overall chasing wear, otherwise near mint.	\$450



72	Waterman	1925	52 LF Set in Cardinal Hard Rubber. Very rare – especially in this condition! GFT. Extra-fine, flexible, italic nib. New-old-stock. Except for a slight shade difference where the barrel was covered by the cap, mint in original box.	\$550
73	Waterman	1925	Twist-activated pencil for above set.	Set
74	Waterman	1925	52 LF in Red Ripple Very unusual NP trim, including the cap band with two chased bands. Medium, extra-flexible nib. Near mint+	\$275
75	Waterman	1925	52 LF in Red Ripple GFT Extra-fine/fine nib. New-old-stock. Mint	\$225
76	Waterman	1925	52 LF in Woodgrain Hard Rubber (rarer than ripple). GFT Fine, extra-flexible nib. Imprint wear reduces the pen to “Excellent,” but no other defects.	\$150
77	Waterman	1925	55 LF in Red Ripple. GFT. Fine, flexible nib. New-old-stock. Mint. You’ll never find a nicer example! See matching pencil below.	\$450
78	Waterman	1925	52, 54, 55 twist-activated Pencil in Red Ripple. GFT. Near mint. Matches pen above. Buy with pen above @ \$75.	\$100
79	Waterman	1925	56 LF in Red Ripple. GFT. Medium, italic nib. Wear to the bottom line of the barrel imprint, otherwise near mint.	\$600
80	Waterman	1925	52V LF Ring-top in Red Ripple. Much rarer than the narrower 51 1/2V normally found. Fine, flexible nib. New-old-stock. Mint.	\$125
81	Waterman	1927	7 LF in Red Ripple with a “Blue” nib and cap band, designating a stub, italic nib which, according to Waterman, was “popular with rapid writers.” 1 st year model, without the white bookends on the blue band. A little wear to the first line of the barrel imprint (fully readable), otherwise near mint.	\$750



82	Waterman	1927	5 LF in Red Ripple with a "Red" color-coded nib and cap band. "Red" designated by Waterman as a "Standard, medium, semiflexible" nib. I call them "Extra-flexible." Two available: (1) Near mint+ @ \$475; (1) Imprint wear @ \$375.	\$475 \$375
83	Waterman	1928	952V LF in Blue-Green Ripple (rare). GFT. Other manufacturers switched to Celluloid, while Waterman was perfecting colored hard rubber. A mistake they remedied in 1929 with the introduction of the Patrician. Fine, extra-flexible nib. A little imprint wear, otherwise near mint.	\$350
84	Waterman	1928	94 LF in Blue-green Ripple (rare). GFT and 9K solid gold cap band. While other manufacturers were switching to Celluloid, Waterman was perfecting their colored hard rubber. A mistake they soon remedied with the 1929 introduction of the Patrician. Fine, extra-flexible nib. A little imprint wear (fully readable) otherwise near mint.	\$600
85	Waterman	1929	52 combination Pen - Pencil in Black Hard Rubber. Quite rare! GFT. Broad, extra-flexible, italic nib. Brassing to the upper edge of the cap band, otherwise near mint.	\$700
86	Waterman	1930	Music Nib! 42 Safety eyedropper-fill in Red Ripple Hard Rubber. Fine, flexible Artist nib. New-old-stock. Mint.	\$700
87	Waterman	1930	Artist Nib! 42 Safety eyedropper-fill in Red Ripple Hard Rubber. Extra-fine, triple-flexible Artist nib. Signed Waterman accommodation clip. Near mint.	\$1000
88	Waterman	1935	52 LF in Red Ripple. Very late production, with mid-1930's "Shovel" lever and barrel imprint. A very hard to find anomaly, especially with no clip or cap band, which would have been standard at that time. Extra-fine, flexible nib. New-old-stock. Mint and beautiful!	\$250
89	Waterman	1936	Music Nib! 44 eyedropper-fill Safety in Black Smooth HR (quite rare). GFT, including the 2 barrel bands. Double-broad, flexible, triple-tined, double vent hole nib. Near mint.	\$500
89A	Waterman	1936	Lady Patricia 44 eyedropper-fill Safety in Black Smooth Hard Rubber (quite rare). GFT, including the 2 barrel bands. Near mint. Two available: (1) Fine, flexible nib; (1) Fine, flexible, italic nib.	\$500



Featured Vintage Pens - Montblanc

90	Montblanc	1935	202 Safety eyedropper-fill in Black Hard Rubber. GFT. Fine, flexible nib. A tad of cap band brassing, otherwise near mint.	\$550
91	Montblanc	1939	138 Meisterstück PIF in Black. GFT. Visualated barrel with perfect black pinstriping. Made for the Italian market (cap tube is imprinted "Fabbricata in Germania"). Two-toned alloy (correct), medium/broad, flexible nib. A touch of brassing to the rear of the cap band and to the nib plating, otherwise near mint.	\$2500
92	Montblanc	1944	25 Push-knob fill 12-sided Faceted in Platinum (perhaps Montblanc's most attractive celluloid). GFT. Correct "Meisterstück" nib (medium/fine, flexible). "User Grade" pen, with brassing of the clip and cap band, including each of its 12 points (the celluloid and imprints are near mint).	\$750
93	Montblanc	1946	244 PIF in Tiger's Eye (beautiful celluloid!). GFT. Fine, flexible nib. Near mint+	\$1100
94	Montblanc	1946	244 PIF in Silver Striped. GFT. Fine, flexible nib. A tad of brassing to the lower back edge of the clip washer, otherwise near mint.	\$1000
95	Montblanc	1946	246 BF in Green Marble (much rarer than it's counterpart in piston-fill). GFT. Double-broad, flexible, italic nib. Near Mint.	\$650
96	Montblanc	1946	246 BF in Coral Red (rare). GFT. Medium/fine nib. User grade pen with brassing to the clip and cap bands and minor surface scratches to the celluloid visible with a loop. Would otherwise be \$800.	\$500
97	Montblanc	1949	146 PIF in Black Celluloid. GFT. Rarer version, with the long visualated window with perfect pinstriping. Fine, flexible nib (rare for a Montblanc)! Near mint	\$1000
98	Montblanc	1950	642 Masterpiece in Green Striped. GF cap in "Fully Pinstriped" pattern. Visualated barrel. Two-toned, medium/broad, oblique, italic nib (shaped like left foot). Near mint.	\$900
99	Montblanc	1950	642 Masterpiece in Silver Striped. GF cap in "Fully Pinstriped" pattern. Visualated barrel. Two-toned, medium, flexible nib. Some barrel ambering, and a trace of ink in the cap, otherwise near mint.	\$500



100	Montblanc	1950	142 PIF in Black Celluloid (not the later "precious resin"). GFT. Visualated barrel with perfect pinstriping. Two-toned, medium/fine, flexible nib. Near mint.	\$400
101	Montblanc	1952	642 Masterpiece in Black. "Silvexa" (matte chrome plating on steel) cap, with GF band and clip. Visualated barrel with very nice vertical striping. Two-toned, medium, extra-flexible nib. User grade with wear to cap tube (otherwise near mint).	\$450
102	Montblanc	1955	24 PIF in Black. GPT. Visualated barrel. Semi-hooded, medium/fine nib. New-old-stock. Mint. Double-broad, oblique nib (shaped like left foot)	\$200
102 A	Montblanc	1955	24 PIF in Black. GPT. Visualated barrel. Semi-hooded nib (double-broad, oblique - shaped like left foot). New-old-stock. Mint.	\$225
103	Montblanc	1955	22 PIF in Black. GPT. Visualated barrel. Fine semi-hooded nib. Near mint.	\$175
104	Montblanc	1955	22 PIF in Black. GPT. Visualated barrel. Fine, semi-hooded nib. New-old-stock. Mint with original label.	\$225
105	Montblanc	1955	22 PIF Set in Black. GPT. Visualated barrel. Fine, semi-hooded nib. New-old-stock. Mint with original label in original leather case.	\$350
106	Montblanc	1955	"Clip-activated" ball pen for above set.	Set
107	Montblanc	1955	74 PIF in Black with Gold-filled cap in alternating pinstripe and plain panels pattern. Visualated barrel. Fine, semi-hooded nib. Near mint.	\$350
108	Montblanc	1955	32S PIF in Black with Silvexa cap (brushed plated chrome on steel). GFT. . Visualated barrel. Medium, semi-hooded nib. Near mint.	\$275
109	Montblanc	1969	149 PIF in Black. GPT. Visualated barrel. Tri-color 14C nib. Ebonite feed. Broad nib. Near mint+.	\$600



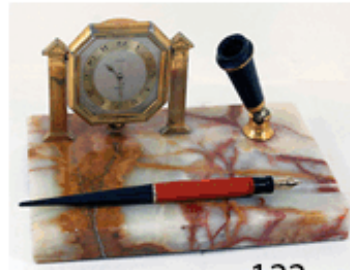
110	Montblanc	1969	149 PIF in Black. GPT. Visualated barrel. Tri-color 18KC nib. Ebonite feed. Near mint+. Three available: (1) Broad/double broad nib; (1) Medium/broad nib; (1) Broad, oblique nib (shaped like left foot).	\$700
111	Montblanc	1971	220 PIF Set in Black Matte. GPT. Visualated barrel. BB nib. New-old-stock. Mint.	\$275
112	Montblanc	1971	250 button-activated Repeater Pencil for above set.	Set
113	Montblanc	1971	121 PIF in Black. GPT, including the "wave" cap band. Visualated barrel. Double-broad, italic ,semi-hooded nib. New-old-stock. Mint.	\$175
114	Montblanc	1990	Scenium cap-activated Ball Pen in Black Matte (rare). This model was designed to capture a price point much lower than Montblanc normally sought (\$90 vs \$300+). It didn't sell well and was discontinued shortly afterwards. Chrome-plated Trim. Near mint+. By the way, Montblanc is trying again this year with another low priced ball pen, the "Cruise."	\$75
115	Montblanc	1992	Hemingway Ball Pen in Cardinal with Black barrel. GPT. New-old-stock. Mint. No box or papers.	\$650
116	Montblanc	1990	146 PIF in Black. GPT. Visualated barrel. Two-tone 14K, fine nib. Montblanc was still using an ebonite feed at this time (pre-injection molded plastic feed). Near mint.	\$350
117	Montblanc	1991	146 PIF in Black. GPT. Visualated barrel. 14K, extra-fine/fine nib. Montblanc was still using an ebonite feed at this time (pre-injection molded plastic feed). Near mint.	\$350
118	Montblanc	2000	146 LeGrande PIF in Black. GPT. Visualated barrel. New-old-stock. Mint with original barrel label. Two-tone 14K, medium nib	\$350
119	Montblanc	2010	144 Doue cartridge/converter-fill in high polished Stainless Steel. Platinum-plated trim. Two-tone 18K, medium/broad nib. New-old-stock. Mint. Converter included.	\$400



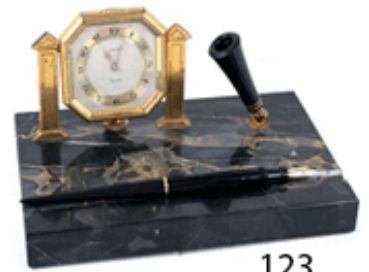
120



121



122



123



124



125



126



127



128



129



130

A Page of Vintage Desk Sets

120	Parker	1930	Duofold Desk Set in geometrically shaped Black Glass with gold bordered jade geometric shaped applique and working Elgin 30 hour clock. Very Art Deco and beautiful! Black Duofold BF pen. Medium/fine nib. Near mint.	\$300
121	Parker	1924	Duofold Sr. Desk Set in Black Glass. Approximately 10" x 7 1/4" x 1" oval shaped, with beveled top edge. Two hard rubber Duofold Sr. Pens: Black & Cardinal, with b Broad nibs and the 1924 "Medium" size imprint (rare). Sterling Silver plaque applied reads "In Appreciation Sales Department Goodyear Canada. 1927."	\$350
122	Parker	1926	Onyx Desk Set in Ivory and Bronze Pearl with Bronze Veins and 8-Day Elgin Clock which is working perfectly. Approximately 8" x 5" x 7/8". Duofold Jr. BF pen in Cardinal with Black taper. GFT. Med/broad nib. A few very minor edge flakes, otherwise near mint. Without the pen @ \$350.	\$450
123	Parker	1926	Onyx Desk Set in Black with Bronze Veins and 8-Day Elgin Clock which is working perfectly. Approx. 8" x 5" x 1". Duofold Jr. BF pen in Black. GFT. Medium nib. A few very minor edge flakes, Without the pen @ \$350.	\$450
124	Waterman	1925	55 Desk Set in Wood with Perpetual Calendar in Chrome Plate. Approximately 9" x 6" x 1" with beveled edges and a groove to hold another pen or pencil. Black LF pen with NP trim. Fine, triple-flexible nib! Pen is mint, new-old-stock; base is perfect; calendar works perfectly and shows minor wear.	\$450
125	Sheaffer	1939	Onyx Desk Set in Black w/ White Pearl Veins & Westclox which is working perfectly. Approximately 7" x 4" x 1/2" with rounded front and back edge. Triumph Touchdown desk pen in Golden Laminated with matching taper & trumpet. GFT. Medium nib. Copper clock-holder engraved in rear "Edna from Ralph Christmas 1939."	\$250
126	Wahl Eversharp	1929	Onyx Desk Set in Green with Bronze and Red Veins and 8-Day Elgin Clock (working perfectly). Approximately 8" x 5" x 1". #2 Green and Bronze desk pen. GFT. Medium nib. Near mint. Without the pen @ \$350.	\$450
127	Montblanc	1960	Pen Stand in Wood with "Mont Blanc" printed on both "wheels." Wheel is about 2"; overall length about 4". Pen is shown for example only, and is not included.	\$50
128	Parker	1929	Onyx Desk Set in very Light Green Ivory Pearl with Yellow, White and Bronze Veins and 8-Day Elgin Clock which is working perfectly. Approximately 8" x 5" x 7/8". Duofold Jr. BF pen in Mandarin Yellow. GFT. Med/fine nib. A few very minor edge flakes, otherwise near mint. Oddly, the pen has no imprint. Without the pen @ \$350.	\$450
129	Montblanc	2010	144 Desk Base in Black with inlaid brass plate (not engraved). Approximately 4 1/4" x 3" x 1". 144 cartridge/converter-fill in Black with 2-tone, medium nib. Converter included. Without pen @ \$200.	\$350
130	Parker	1937	Vacumatic Desk Set in Wood with very Art Deco Lux Clock (not working). Base approx. 11" x 4 1/4" x 1". Clock frame 4 1/4" square with polished chrome trim. Silver Laminated Vacumatic Pen. NPT. Med/fine nib. Near mint.	\$200



A Page of Rare Vintage Crocker Pens - Unusual filling mechanisms

131	Crocker	1905	#3 Blow-fill in Red Mottled Hard Rubber (very rare). The earliest model of the Crocker Blow-fill, with "Patent Pending" as part of the barrel imprint. The user blew through a hole on the side of the barrel, not far from the bottom to depress the bladder (shortly later the "blow hole" was moved to the actual bottom of the barrel). Eventually, Crocker supplied a rubber syringe (bulb) which fit over the end of the pen to replace the (unsanitary) use of the mouth! This is a very early "Cone Cap" example, without cap threads. Extra-fine "Crocker Boston" nib, with no number to designate the size. A few very small flakes out of the cap lip, otherwise near mint+.	\$400
132	Crocker	1906	#2 Blow-fill in Red Mottled Hard Rubber (very rare). The "Blow Hole" is now on the very bottom of the barrel. Early "Cone Cap" example (no cap threads). Fine, triple-flexible nib. Near mint+. Date approximate.	\$300
133	Crocker	1910	#2 Blow-fill Model 25SB in Black Chased Hard Rubber. The "B" probably designated a model with one gold-filled band. Fine, triple-flexible nib. Near mint+	\$125
134	Crocker	1910	#2 Blow-fill Model 25SBB in Black Smooth Hard Rubber. The "BB" probably designated a model with two gold-filled bands. Medium, triple-flexible nib. Near mint+	\$125
135	Crocker	1910	#3 Blow-fill (could be Model 35S) in Red Mottled Hard Rubber (rare). Medium/fine, triple-flexible nib. Near mint+	\$250
136	Crocker	1910	#3 Blow-fill Model 25 in Black Chased Hard Rubber. Extra-fine nib with just a tad of flex. Some imprint and chasing wear (imprint easily readable), otherwise near mint.	\$100
137	Crocker	1910	#2 Blow-fill Model 25 in Black Chased Hard Rubber. Fine nib with a tad of flex. Near mint+	\$125
138	Crocker	1917	#2 Hatchet-fill Model L25S in Black Chased Hard Rubber. NP Clip and GF "Hatchet." The lever (hatchet), patented by Crocker, was attached to the blind cap and, when unscrewed lifted on a fulcrum so the other end forced the press bar against the bladder to fill the pen. Broad, extra-flexible nib. Near mint.	\$150
139	Crocker	1917	#4 Hatchet-fill (could be Model L45S) in Black Chased Hard Rubber. GF clip and "Hatchet." See the pen above for more information. Medium/broad nib. Some chasing and imprint wear (easily readable) otherwise near mint.	\$175
140	Crocker	1920	#4 Lever-fill Pen-Pencil Combination in Red Mottled Hard Rubber (extremely rare!). GFT, including the clip with the spring operated "Shirt Grabber" designed so the pen could not drop out of the user's pocket. Medium nib.	\$600



A Page of Modern Cartier Pens

141	Cartier	2000	Calligraphique (Calligraphy) LE 403/2000 cartridge/converter-fill in Black Onyx and Platinum. Super long (almost 7 3/4" closed, it comes with an acrylic desk stand. 18K white gold, stub nib. New-old-stock. Mint in original form fitted box with papers, cartridges, converter, desk stand and outer box.	\$1000
142	Cartier	2007	Santos Ball Pen in Grey Matte Lacquer. Palladium plated trim. Near mint+ in original box with papers & sleeve.	\$125
143	Cartier	2010	Diablo cartridge/converter-fill in Black. GPT. Blue cabochon in cap-top. 2-toned 18K, medium/broad nib. Some scratches to the clip & barrel noticeable with a loop, otherwise near mint. A great daily user. Converter included.	\$100
144	Cartier	2010	Diablo Roller Ball in Black. GFT. Blue cabochon in cap-top. Near mint+ in original box with papers & sleeve.	\$175
145	Cartier	2010	Diablo cartridge/converter-fill in Platinum-plate in Pinstripe. White gold 18K, medium/broad, white gold nib. Near mint+. Converter included.	\$200
146	Cartier	2010	Diablo Rollerball in Black Composite. Polished Platinum-plate trim. Blue cabochon mounted at the top of the cap. New-old-stock. Mint.	\$200
147	Cartier	2010	Diablo cartridge/converter-fill in Brushed Stainless Steel. Blue cabochon mounted at the top of the cap. 18K white gold, medium nib. New-old-stock. Mint. Converter included.	\$350
148	Cartier	2010	Diablo de Cartier Ebony & Damas LE 42/1000 Cartridge//Converter-fill with Ebony barrel and Etched Damas Steel Cap and Gripping Section. Polished Platinum-plate trim. Blue cabochon mounted at the top of the cap. 18K white gold, medium nib. New-old-stock. Mint. Converter included.	\$600
149	Cartier	2010	Platinum Fluted cartridge/converter-fill in Platinum-plate. 18K white gold, medium nib. New-old-stock. Mint. Converter included	\$500
150	Cartier	2010	Dandy Ebony and Crocodile cartridge/converter-fill LE 0345/1847. Matching gold-plate gripping section, barrel threads, cap and barrel trim. Two-tone 18K, fine nib. New-old-stock. Mint. Converter included.	\$500
151	Cartier	2010	Dandy Ebony and Crocodile cartridge/converter-fill LE 0650/1847. Matching platinum-plate gripping section, barrel threads, cap and barrel trim. 18K white gold, fine nib. New-old-stock. Mint. Converter included. [Two available, the second LE 0384/1847].	\$500



Vintage Italian Pens

152	Ancora	1929	"Rapid" #4 size Safety eyedropper-fill in 18KR Rolled-Gold (called "gold-filled" in the US). Very rare pattern, with wide alternating White and Yellow 18K rolled-gold spiral filigree panels. Rollerball clip. Correct, Warranted 14K, medium/broad, flexible nib. Near mint.	\$2600
153	Aurora	1928	R. A. 5 Safety on Black Hard Rubber. Extremely rare and early. GFT, including the floral design clip washer. Fine nib. The largest size in which the R. A. Safety was manufactured. Slight ambering, otherwise near mint.	\$450
154	Aurora	1929	A. R. A. 2 LF in Red Mottled Hard Rubber. GFT. Broad, extra-flexible nib."FIAT" (the world famous Italian auto company) die cut into the front of the cap band. Near mint+.	\$550
155	Aurora	1933	Novum Faceted Large LF in Golden Pearl with Black Veins (beautiful). GFT. Rare, first model, with safety clip. Aurora Platiridio #5 fine nib. The Novum has tie filler lever mounted on the very bottom of the barrel. Near mint+	\$2250
156	Aurora	1935	Superna Large BF in Black. The largest size in which this model was made. GFT, including the "floral guilloche" center cap band. Fine, triple, flexible nib. Near mint.	\$900
157	Aurora	1940	Novum Medium LF in Golden Pearl Web). GFT. #3 fine, flexible nib. The lever mounted on the bottom of the barrel. A touch of wear to the very center of the barrel imprint (fully readable), otherwise near mint.	\$1000
158	Aurora	1951	88 PIF in Black with 18K Solid Gold "Pinstriped" cap (very rare!). Semi-hooded nib. The "88" was designed to compete with the Parker 51, and was immensely popular! Medium/broad nib. New-old-stock. Mint in original leather covered wooden box, the inside cover marked "Aurora Gold Gift." Box a little threadbare.	\$825
159-160	Aurora	1975	88P PIF Set in Black with Gold-plate "Fully Pinstriped" cap. Semi-hooded nib (medium/fine). Visualated barrel with perfect pinstriping. New-old-stock. Mint in original box with papers and outer sleeve. The cover of the box shows an image of the Fiat car factory. Cap activated ball-pen.	\$350
161	Aurora	1995	Thesi cartridge/converter-fill set in 18K "Pinstriped." Very rare and beautiful! Broad nib. Pen is mint, new-old-stock, in form-fitted, velvet lined box. Converter included.	\$2300
162	Aurora	1995	These Ball Pen in 18K "Pinstriped" for above set. The famous "flat design" which was selected for permanent display at the Museum of Modern Art. Has bee used, with minor dings and surface scratches.	Set



163	Koska	1945	#5 size PIF in Silver Laminated. GFT. Broad nib. Highly visualated barrel. Correct "Warranted 14 Cts 1 st Quality C5" nib. New-old-stock. Mint.	\$250
164	Omas	1933	Extra Lucens Faceted Medium plunger-fill in Golden Laminated (like Parker Vacumatic). GFT. Fine, extra-flexible nib. Near mint.	\$1800
165	Omas/ Pagliero	1935	Plevonia BF in Green Laminated (Parker Vacumatic look-a-like), set off with Black ends. Almost certainly made by Omas for Pagliero – see, for example, Omas item #34 above for an almost identical pen, inside and out. This can also explain the Omas Extra nib (medium/fine, extra-flexible) found in the pen. GFT, including the wide center "Greek Key" cap band. Rollerball clip. This is the only size in which the Plevonia was made. Near mint.	\$1000
166	Omas	2009	360 Rollerball Large Cranberry Red. Wild (Black & White). NPT with "Greek-Key" lower cap band. Matching bands on gripping section. New-old-stock. Mint.	\$175
167	Omas	1975	50 Faceted cartridge/converter-fill in brushed Stainless Steel (rare). Even the polished gripping section is 12-sided. Semi-hooded medium nib. Near mint-	\$150
168	Tabo	1935	Transparente Large Vacuum-fill in Black. Long, clear visualated barrel with wide black spiral. Turning the blind cap propels the plunger mechanism to press to fill the pen. Then turn once again to repel the mechanism. GFT. Medium, extra-flexible nib. New-old-stock. Mint.	\$650
169	Tabo	1939	Mentis Large BF in Golden Arco. NPT. "Tabo" comes from the first two letters of the founder's name (Tantini) and the city where the factory was located (Bologna, Italy). Made in three sizes, this example being the largest size. CPT. Large, medium, nib (marked "10" by TABO). New-old-stock. Mint in original box.	\$550
170	Tabo	1946	Vertex Vacuum-fill in Blue Arco. Rare model, shortly replaced by the "Tabo V" piston-fill. Turning the blind cap propels and repels the plunger mechanism. Semi-hooded, medium/fine nib. GFT New-old-stock. Mint.	\$500
171	Tabo	1947	"S" piston-fill in Golden Arco (beautiful). GFT, including the chased cap band. Fine, extra-flexible nib. Visualated barrel. New-old-stock. Mint.	\$750
172	Tibaldi	1935	Infrangible Series III BF in Green Pearl Marble with Black ends. GFT. Medium, extra-flexible nib. Near mint.	\$675
173	Tibaldi	1935	Transparente Extra Piston-fill in Black. GFT. Wide visualated barrel with narrow black spiral. Medium, flexible nib. New-old-stock. Mint.	\$450



Regular Alphabetical Section

174	Carter	1928	Superwear Model 4125 (#6 size) LF in Red Mottled Hard Rubber. Carter producing from 1924 to 1932, forced out of business by the depression. Fine nib. Near mint.	\$450
175	Chilton	1929	#4 size Wingflow Pneumatic-fill in Light Green Pearl with Red Veins and black blind cap (beautiful). GFT. Medium/broad, extra-flexible nib. Near mint+	\$500
176	Chilton	1932	Oversize Deco Band Pneumatic-fill in Green Marble. GFT, including the 3 cap bands (wide "Greek-Key" center band). Fine nib. Near mint.	\$1250
177	Chilton	1936	Wingflow pneumatic-fill in Black with Sterling Silver inlay. The pattern repeats twice on the barrel and once on the cap (on the rear). Fine nib. Near mint.	\$650
178	Conklin	1927	#2 LF "Halloween" in Ivory, Orange & Black Veined Celluloid. GFT. Rare, beautiful and highly desirable. Fine, flexible nib. New-old-stock. Mint.	\$775
179	Conklin	1928	Long Endura LF in Black & Bronze. GFT (one cap band). Inlaid yellow bands. Fine nib. New-old-stock. Mint.	\$550
180	Conklin	1929	Long Endura LF in Black & Bronze. GFT (two cap bands). Inlaid yellow bands.. Medium/fine nib. New-old-stock. Mint with original label.	\$625
181	Conklin	1930	Endura Symetrik Oversize LF in Black & Bronze. In 1930 Conklin transitioned from the flat-top Endura to the streamlined, Endura Symetrik. I included the two pens immediately above so you can see the transition from one band to two and then to the new streamlined shape. Made in three sizes (this being the largest) and was very short lived as it soon transitioned to the piston-filled Nozac. Examples of the Endure Symetrik are rare today. GFT. Medium nib. New-old-stock. Mint.	\$800
182	Conklin	1930	Endura Symetrik Large LF in Green with Black Veins. GFT. Fine, italic nib. Some even overall ambering, otherwise near mint.	\$550
183-184	Conklin	1930	Endura Symetrik Standard LF Set in Green with Black Veins. GFT. Medium nib. Outstanding color! New-old-stock. Mint. Twist-activated pencil.	\$800



185	Conklin	1931	Nozac Standard 14-Sided PIF in Green Herringbone. The Nozac was advertised as "the pen which winds like a watch" and were Conklin's top-of-the-line pens at the time. GFT. Fine nib. New-old-stock. Mint.	\$450
186	Conklin	1932	Nozac PIF 12-Sided 5M Word Gauge in Grey Pearl with Black Stripes. Taking advantage of the visualated barrel, and to promote it's large capacity, Conklin imprinted a gauge running up the side of the barrel to show how many words the remaining ink would write. The gauge on this model runs from 1M (thousand) to 5M. NPT, including the chased cap band. Fine nib. Minor wear to the barrel imprint (fully readable) otherwise near mint.	\$400
187	Conklin	1931	#2 LF in Moss Agate (rare). GFT. Fine, italic nib. Near mint.	\$250
188	Conklin	1931	#2 LF in Green Marble. GFT. Fine nib with a tad of flex. Near mint+	\$175
189	Conklin	1935	Nozac 10-Sided Pencil in Green Pearl with Black Veins. GFT. Near mint+	\$75
190	Diamond Medal	1927	#8 LF in Jade with White and Black ends. GFT. Made by National Pen Products, Diamond Medal was a Sears, Roebuck "House Brand" for their high quality pens. Medium/fine nib. An applied metal plaque on the cap-top sports the letter "C" in an oriental motif. Near mint.	\$250
191	Edward Todd	1920	#2 LF Straight Holder in Gold-filled. The pattern is alternating wave chased and plain panels, with (1) 3/16" inlaid sterling silver band with inlaid blue enamel in a Greek Key design. Edward Todd started out as a partner in Mabie, Todd & Company and went off on his own at the beginning of the 1870's, introducing his first fountain pen in the early 1880's. The company didn't survive the depression. Fine, flexible nib. Near mint+.	\$600
192	John Hancock	1922	Unusual filling mechanism. #4 cartridge-fill in Black Hard Rubber. Cartridge-filling pens started showing up in the market in the 1920's. In late 1921, The Pollock Pen Co. was founded and applied for a patent for a pen using a long copper cartridge which screwed into the gripping section. Pollack called the pen the "John Hancock," one of the first cartridge pens ever marketed. GFT. Extra-smooth, extra-fine, flexible nib. Near mint+.	\$250
193	Leboeuf	1928	#3 LF ring-top in Bronze Pearltex. GFT. The cap screws both onto the top and bottom. Fine nib. Near mint.	\$225
194	Morrison	1925	#8 LF in Sterling Silver "Filigree" overlay on Black Hard Rubber. The largest Morrison overlay I have seen (and perhaps the rarest!). Medium nib. Light overall ambering of the hard rubber. Some minor surface scratching of the overlay noticeable with a loop, otherwise near mint.	\$600



195	Penol (Denmark)	1938	Model 8K 12-sided BF in Green Pearl with Black Veins and Black blind cap. GFT, including the "washer" clip and 3 cap bands, the center band being wider. Penol started in 1930, with each pen made by hand. As a result, each pen is unique with respect to size, shape, imprint, assembly, feed, section, nib, and clip. They continued producing, even during the German occupation in the early 1940s. Fine, extra-flexible nib. Near mint.	\$175
196	Parker	1947	"VS" (Very Special) BF in Brown. Special color manufactured for Parker in Denmark by Chris Olson and never produced in the US. "Rolled-Gold" cap (what we call "Gold-Filled in the US) in alternating pinstriped and plain panels pattern (gold caps are very rare for the VS). Aluminum button filler. Medium, flexible nib. The VS was the successor to the Vacumatic, and sold far better in Europe than in the US. Some minor signs of use.	\$100
197	Parker/Kullock	1949	51 Aerometric-fill components within an Ariel Kullock made Light Yellow Transparent Demonstrator. Brushed Lustraloy (stainless steel) cap. Medium nib. New-old-stock. Mint with perfectly clear plyglass.	\$200
198	Parker	1958	21 Aerometric-fill in Gray. White cap with "Fish Scale" cap (diamond chasing in gold). Rare cap! The "21 Fish Scale" replaced the 41 Fish Scale in 1958. The way to tell the difference between the two is the 41 filler mechanism is imprinted "41." Fine nib. New-old-stock. Mint with a perfectly clear plyglass	\$150
199	Parker	1964	75 cap-activated Ball Pen in Vermeil (Gold-fill over Sterling Silver). Rare. Near mint+ (could be new-old-stock).	\$250
200	Parker	1964	17 Aerometric-fill in Dark Green. CPT. Manufactured in England, few ever made their way to the US. Fine nib. New-old-stock. Mint with a perfectly clear plyglass.	\$95
201	Parker	1964	17 Aerometric-fill in Dark Blue. CPT. Manufactured in England, few ever made their way to the US. Broad nib. New-old-stock. Mint with a perfectly clear plyglass and original barrel decal.	\$95
202	Parker	1965	75 Spanish Treasure cartridge/converter-fill in Sterling Silver. The first Limited Edition fountain pen ever produced! New-old-stock. Mint with certificate of authenticity rare doubloon coin with parchment description, and nib adjustment tool. No box. "66" (medium) nib. Converter included. Pen has original patina (will polish on request). I can provide a mint ball pen box with the pen for \$50 additional.	\$1000
203	Parker	1965	75 Spanish Treasure Ball Pen in Sterling Silver. The first Limited Edition ball pen ever produced! New-old-stock. Mint in the original box with papers and rare doubloon coin with parchment description. Pen has original patina (will polish on request). No certificate of authenticity.	\$800



204	Parker	1965	75 C/C set in Sterling Silver Cisele "crosshatch" pattern. GFT. Early model with flat ends, short-feathered arrow clip, section angle indicator with "0" at center, "65" (fine) nib. Box includes brochure and a Parker Pen Company serial numbered certificate of Authenticity stamped by the (in Italian), Adriano Mazzi, a famous shop in Milan, boxed cartridges and a nib wrench. Made in USA for the Italian market, with the serial number (matching the certificate) imprinted into the side of the gripping section. Converter included. New-old-stock. Mint in original red velvet lined black leather box.	\$395
205	Parker	1965	Cap-activated ball pen for above set.	Set
206	Parker	1974	75 Place Vendome Cisele in Gold-Plate "Small Squares." Medium nib. Near Mint. [Two available]. Converter included.	\$195
207	Parker	1976	75 Place Vendome Prince de Galles in Silver Electroplate. "Plaid" pattern. Extra-fine nib. Some signs of use. Excellent. Converter included.	\$175
208	Parker	1980	75 Place Vendome Millerais in Silver Electroplate. "Pinstriped" pattern. Medium nib. Near mint. Converter included.	\$195
209	Parker	1983	75 Place Vendome Florence in Sterling Silver. Alternating Pinstripe and Plain Panels pattern. Blue cabochon in the cap-top. Double-broad nib. Slightest brassing of the bottom tassie, otherwise near mint. Converter included.	\$350
210	Parker	1970	75 Titanium cartridge/converter-fill in Titanium. A rare pen. "Dished" tasse in cap top. Red "jewel in the barrel bottom. Medium nib. New-old-stock. Mint. Converter included.	\$700
211	Parker	1994	Duofold International cartridge/converter-fill in Green Marble. GPT. The two-tone 18K nib is marked "M" but seem to me to be closer to broad. New-old-stock. Mint. Converter included.	\$200
212	Parker	1997	Duofold Centennial in Pearl & Black. GPT. Rare two-tone 18K, "87" nib (fine, oblique - shaped like left foot). New-old-stock. Mint. Converter included.	\$400



Vintage Parker 51 Sets

213	Parker	1945	51 Vacumatic Blue Diamond Set in Black with gold-filled cap. Caps are 1/10 14K GF in the alternating wavy lines, pinstriped and plain panels pattern. Medium/fine nib. Near mint.	\$325
214	Parker	1945	Twist-activated pencil for above set.	Set
215	Parker	1946	51 Vacumatic Blue Diamond Set in Black with Brushed Lustraloy (stainless steel) caps with the wide, raised, integrated cap bands (sometimes called the "Stacked coin" band). Medium/fine nib. A few cap surface mars noticeable with a loop, otherwise near mint.	\$200
216	Parker	1946	Twist-activated pencil for above set.	Set
217	Parker	1946	51 Vacumatic Blue Diamond Set in Dove Grey. Brushed Lustraloy with GF clips Medium. Near mint.	\$175
218	Parker	1946	Twist-activated pencil for above set.	Set
219	Parker	1948	51 Vacumatic Blue Diamond Set in Cordovan Brown. 1/10 16K GF caps in the alternating 4 pinstriped and plain panels pattern. Fine nib. Near mint+ (could be new-old-stock).	\$250
220	Parker	1948	Twist-activated pencil for above set.	Set
221	Parker	1951	51 Aerometric Set in Teal Blue. Brushed Lustraloy (stainless steel) caps. Fine nib. Near mint+ with no signs of use and a perfectly clean plyglass.	\$175
222	Parker	1951	Twist-activated pencil for above set.	Set
223	Parker	1953	51 Aerometric Set in Buckskin (Beige). 1/8 14K GF caps in the "Fully Pinstriped" pattern. Fine nib. Near mint+ with no signs of use and a perfectly clean plyglass (could be new-old-stock).	\$250
224	Parker	1953	Cap-activated pencil for above set.	Set



225	Pelikan	1937	100N PIF in Green Pearl with Black cap. GFT. Green acrylic barrel. Visualated window. Medium nib, with a touch of flex. Near mint+. See matching pencil below.	\$350
226	Pelikan	1937	200 "Auch Pelikan" repeater button-activated pencil in Green Pearl. GFT. Near mint. Matches pen above. Buy with pen above @ \$75.	\$100
227	Pelikan	1937	100N PIF in Tortoise with Red cap, inner cap and turning knob. Amber celluloid visualated barrel. Fine, flexible nib. Near mint.	\$1250
228	Pelikan	1938	100C PIF in Black. Acrylic barrel. GFT. Knurled turning knob. Visualated barrel. Medium, flexible, wartime Chromium Nickle nib (many folks believe these write better than the gold nibs!). Near mint.	\$300
229	Pelikan	1938	100N PIF in Grey Pearl (rare) with Black cap. GFT. Green acrylic barrel. Visualated window. Medium/fine nib, with a touch of flex. Near mint.	\$325
230	Pelikan	1942	100 PIF in Black. Acrylic barrel. GFT. Knurled turning knob. Visualated barrel window. Medium/fine, flexible nib. A few minor scratches to the barrel window from the piston gasket, otherwise near mint.	\$275
231	Pelikan	1942	100 PIF in Green Pearl with Black cap. Acrylic barrel. GFT. Smooth turning knob. Visualated barrel window. Fine, flexible nib. Near mint+ (could be new-old-stock)..	\$325
232	Pelikan	1942	100 PIF in Green Pearl with Black cap. Rare cap, made only for the German market (no export) with two chased bands instead of Gold-filled bands. Acrylic barrel. GFT. Smooth turning knob. Visualated barrel window. Medium, extra-flexible nib. New-old-stock. Mint in original box (no papers).	\$375
233	Pelikan	1942	100N PIF in Grey Marble (rare) with black cap. Acrylic barrel. GFT. Medium nib. Near mint+	\$475
234	Pelikan	1953	100N in Dark Green Pearl/ GFT. Green acrylic barrel. Visualated window. Fine, flexible nib. Near mint.	\$350



235	Pelikan	1953	101N PIF in Tortoise (rare) with matching cap. Correct brown celluloid inner cap and turning knob (these are rarer than the Red Rubber inner cap and turning knob). Green acrylic visualated window. GFT. Medium/fine nib. New-old-stock. Mint.	\$1300
236	Pelikan	1950	400 PIF in Green Striped with Black cap. GFT. Visualated barrel.. Near mint+. Three available: (1) Nib is factory marked "F" but writes more like a medium/fine; (1) Broad, oblique (shaped like left foot); (1) "DF" Fine, manifold.	\$200
237	Pelikan	1950	400 PIF in Brown Striped with Brown cap. GFT. Visualated barrel. Fine nib. Near mint.	\$250
238	Pelikan	1955	400N (rare) PIF in Green Striped with BLUE cap and turning knob (extremely rare!). GFT. Visualated barrel. Medium, oblique, italic nib (shaped like left foot). Near mint.	\$900
239	Pelikan	1956	400NN PIF in Green Striped with Black cap. GFT. Visualated barrel. Near mint. Two available: (1) Nib factory marked "OB," but to me is really double-broad, oblique, italic (shaped like left foot); (1) Fine nib.	\$200
240	Pelikan	1956	400NN PIF in Brown Striped with Brown cap. GFT. Visualated barrel. Near mint. Two available: (1) Medium/fine, oblique; (1) extra-smooth broad.	#250
241	Pelikan	1973	400NN made for Pelikan by Merz & Krell PIF in Black. Has a shorter barrel than the 400NN manufactured in the Pelikan factory, and also no step between the turning knob and barrel. GFT. Medium nib. Visualated barrel. New-old-stock. Mint.	\$300
242	Pelikan	1985	R400 Rollerball in Blue Striped. GPT. New-old-stock. Mint.	\$100
243	Pelikan	2000	M400 PIF in Green Striped. GPT. Visualated barrel. Two-tone 18C, broad, oblique nib (shaped like left foot). New-old-stock. Mint.	\$135
244	Pelikan	2010	M400 PIF in Tortoise (Brown Striped) with White Cap and Turning Knob. GPT. Visualated barrel. Two-tone 14C, extra-fine nib. New-old-stock. Mint.	\$200



245	Pelikan	2010	Soveran M450 PIF in Tortoise (Brown Striped) with Pinstriped gold-plated cap and turning knob. Two-tone 18C, extra-fine nib. New-old-stock. Mint.	\$400
246	Pelikan	2010	Soveran M425 PIF in Translucent Green with Sterling Silver "Banded" cap and turning knob. White gold, 18C, fine nib. New-old-stock. Mint.	\$400
247	Pelikan	1990	Soveran M600 PIF in Green Striped. GPT. Two-toned 14C, broad nib. New-old-stock. Mint.	\$300
248	Pelikan	2010	Soveran R625 Rollerball in Dark Blue with polished Sterling Silver cap and turning knob. Cap with various length blue enamel pinstriping coming up from the cap lip. New-old-stock. Mint.	\$200
249	Sheaffer	1917	#2 LF in Gold-fill over Black Hard Rubber. "Night & Day" pattern (quite rare!). But the cherry on top is the wonderful fine, triple-flexible nib! Cap top lightly engraved "V" in script. A tad of brassing and some wear. Excellent+	\$900
250	Sheaffer	1928	Lifetime Flat-Top Large LF in Black. GFT. Broad, italic nib (rare for Sheaffer!). Near mint.	\$250
251	Sheaffer	1930	3-25 LF in Red Veined Grey. GFT. Rare to find this color in this model. Extra-smooth, medium/fine nib. Barrel a shade darker than the cap, otherwise near mint+	\$150
252	Sheaffer	1933	Lifetime Flat-Top Large LF in Jade (outstanding color!). GFT. Medium/fine nib. Near mint+.	\$400
253	Sheaffer	1933	3-25 Balance full-length (thin) LF in Black. NPT. Fine nib. Near mint.	\$75
254	Sheaffer	1936	Feather Touch 7 Vac-fill in Grey Marble. NPT. This pen has three things going for it: (1) rare color - Grey Marble; (2) Rare Size - have you seen a #7 Feather Touch before (or only #5), and (3) even the nib is imprinted "Feather Touch 7." Extra-fine nib. There is some trim wear noticeable with a loop, otherwise near mint.	\$175



255	Sheaffer	1937	#500 Feather-Touch LF Set in Golden Striped. GFT. Visualated section. Medium nib. Near mint.	\$150
256	Sheaffer	1937	Twist-activated pencil for above set.	Set
257	Sheaffer	1937	1000 Lifetime Balance LF in Silver Striped. NPT. Extra-fine/fine nib. User grade pen because of wear to the trim, otherwise near mint.	\$175
258	Sheaffer	1937	Lifetime Balance Large LF in Golden Striped. GFT. Near Mint. Two available: (1) Fine nib; (1) Medium nib.	\$375
259	Sheaffer	1937	Lifetime Balance Large LF in Black. GFT. Broad nib. Near mint.	\$175
260	Sheaffer	1937	Lifetime Balance Large LF in Silver Striped. NPT. Medium/fine nib. Some trim wear, otherwise near mint.	\$275
261	Sheaffer	1959	PFM IV Snorkel-fill in Blue with Polished Chrome cap and GFT. The label says "Fine" but I characterize it more as medium/fine. New-old-stock. Mint with original decal (hard to read) and nib size label.	\$400
262	Sheaffer	1960	Imperial cartridge/converter-fill in Sterling Silver Diamond Crosshatch design. GFT. The label on the cap says "Med," but I would think it's medium/broad. "Ball" nib, excellent for right & left handers. New-old-stock. Mint with original label. Converter included.	\$175
263	Sheaffer	1960	Imperial cartridge/converter-fill in Vermeil (Gild-fill over Sterling Silver) Diamond Crosshatch design. GFT. Extra-fine nib. Near mint+. Converter included.	\$175
264	Sheaffer	1976	Targa 1007 cartridge/converter-fill in Gold Electroplate "Geometric Classic." Broad "Ball" nib, good for both left and right handed writers. Near mint+. Converter included.	\$150
265	Sheaffer	1976	Targa cartridge/converter-fill in Sterling Silver "Geometric Classic." Medium nib. Near mint. Will polish on request. Converter included.	\$200