

**Gary & Myrna Lehrer's**

# **Quarterly Illustrated Vintage Pen Catalog**

**garylehrer@aol.com**

**Issue #69 - December 2013**

See the Catalog in full color on the web site. For about a week you'll need a password for access (be sure to also see what's remaining from previous Catalogs).

**WEBSITE PASSWORD FOR CATALOG #69: (www.gopens.com): MINT**

**Catalog #69 Features:**

- Featured are Mint-in-the Box Pens & Sets - Perfect for your personal collection or Holiday gift needs.
- Extraordinary Pens: Waterman, Montblanc & Others.
- 20+ Manufacturers Represented.
- Waterman "Tree Trunk" - Zerollo "Two-Pen"!
- Over 275 Items.

**Contact Information:**

- Tel: (203) 389-5295
- email: garylehrer@aol.com or info.gopens@gopens.com
- Fax: (859) 909-1882
- Call until 8:30 PM Eastern Time; Fax or email anytime
- We check our email often

**Subscription Expired:**

- A (4) on your mailing label means your subscription has expired. "Internet Only" renewal is \$10. "Hard Copy" Renewal is \$25 US and \$35 Foreign (see website for details). Received a sample copy? Don't forget to subscribe!

**Please see inside front page for abbreviations and other important information!**

**Gary & Myrna Lehrer      16 Mulberry Road      Woodbridge, CT 06525-1717**



## Here's Some Other Important Information:

**GIFT CERTIFICATES:** Available in any denomination. No extra cost! No expiration! Always fully refundable!

**CONSIGNMENT - PEN PURCHASES:** Ask about consignment rates for the Catalog (we reserve the right to turn down consignments), or see the web site for details. We are also always looking to purchase one pen or entire collections.

### ABBREVIATIONS:

Mint	- No sign of use	Fine	- Used, parts show wear
Near Mint	- Slightest signs of use	Good	- Well used, imprints may be almost gone, plating wear
Excellent	- Imprints good, writes well, looks great	Fair	- A parts pen
Fine+	- One of the following: some brassing, some darkening, or some wear		

---

LF	- Lever Filler	HR	- Hard Rubber
PF	- Plunger Filler (ie. Sheaffer)	BCHR	- Black Chased Hard Rubber
PIF	- Piston Filler (ie. Montblanc)	RBHR	- Red & Black Hard Rubber
PK	- Push Knob Filler (Montblanc)	CF	- Cartridge Filler
GPT	- Gold Plated Trim	ED	- Eyedropper Filler
GFT	- Gold Filled Trim	CPT	- Chrome Plated Trim
BF	- Button Filler	NPT	- Nickel Plated Trim
CRF	- Crescent Filler (Conklin)		

### RETURN PRIVILEGES, POSTAGE and WARRANTIES (see website for complete information):

You have five (5) days from receipt of a pen to return it for any reason. All pens are restored unless specifically noted in the description. **Postage & Insurance are additional.** All pens are shipped insured. For shipments in the US we prefer USPS Priority Mail, and outside the US we prefer Express Mail International. We will of course use other shippers at customer request.

Generally, our pens are warranted for one year. Unfortunately, we sometimes cannot restore some modern pens (post-1970) due to lack of parts or inaccessibility to the mechanisms (many modern pen companies manufacturer their pens with the plan that no restoration will ever be done). If we can't restore the pen, you *may* still have some recourse through the manufacturer or distributor. We can provide contact information for you on request. Thank you for your understanding.

### NIBS:

When reading item descriptions, please assume each nib is original for its pen, and is 14K gold, unless otherwise noted.

\*\*\*\*\*

**Check out our Website - [www.gopens.com](http://www.gopens.com)**

**See our website for:**

- ~Catalog photos in color, plus a downloadable color copy you can print at home.
- ~Information about our book "*Waterman Past & Present - The First Six Decades*"
- ~Protective Shipping & Storage tubes.
- ~White Slotted Storage boxes.
- ~Glass Covered Storage/Display Boxes.
- ~Slotted Trays for chests, boxes and drawers.
- ~Subscription information.
- ~Historical Catalogs for reference.
- ~Information on our Warrantees.
- ~Our Privacy Policy.
- ~Secure Credit Card Submission.
- ~Customer Feedback.
- ~And more...



Extraordinary Vintage Pens				
1	Waterman	1910	42 "Continental Safety" eyedropper-fill in 18 K.R. (Rolled gold-gold-filled. Fantastic high relief overlay with bands of delicate filigree bordering bands of dancing & frolicking cherubs encircling the cap & barrel. Bottom of barrel factory imprinted with both the Waterman logo, along with a very unusual emblem, reading "L.E.W. Co Marca di Controllo (Italian for "control mark"). Fine nib. New-old-stock. Mint in original box. Unrestored.	\$3500
2	Waterman	1910	442 ½ Safety eyedropper-fill in Sterling Silver in "Line & Dot" pattern (rare). Even rarer is the box which includes the "Traveler's Ink" and eyedropper! Broad, flexible, italic nib. Pen is mint. Box is a little threadbare.	\$1500
3	Waterman	1910	48 Safety eyedropper-fill in smooth Black Hard Rubber. GFT. Rare model – most are found chased and without the wide, repousse cap band. The factory Waterman imprint on the cap, since the barrel band would obscure a barrel imprint. Fine, flexible nib. Some red wax still in one vent hole and in the bottom barrel model number imprint. Near mint+ (could be new-old-stock!)	\$2000
4	Waterman	1915	452 "Tree Trunk" LF in Sterling Silver (barrel) and German silver cap. One of the rarest and most unusual of the Waterman overlays! Came in both eyedropper-fill and lever-fill. Never found in any Waterman Catalog (perhaps only by special order) and less than a dozen examples are known to exist. Medium/fine nib, with slight flex. A few light dings to the cap dome, otherwise near mint.	\$9500
5	Montblanc	1920	1 Safety eyedropper-fill in rolled-gold (gold-filled) "hand hammered" floral repousse on black hard rubber. Signed "Mont-Blanc 18 K.R." Absolutely beautiful. Extra-fine nib. Some very minor dings in the barrel knurling and in the metal just below the star, otherwise near mint+.	\$3000
6	Van Cleef & Arpels	1925	Custom BF in 18K Solid Gold "heavy repousse "Basket-Weave" pattern. Absolutely gorgeous! Medium, 18K nib signed "PL," for Peter Lefebvre, famous jeweler and nibmaker. Van Cleef and Arpels have been creating high end jewelry in Paris since 1906. The "Tiffany" of France. New-old-stock. Mint in original box. The pen weighs 48 grams. Outstanding!	\$4000
7	Kaweco	1926	Duofold look-alike BF in 18 KR (rolled-gold/gold-filled) on Black Hard Rubber. Gorgeous overlay with yellow, white and pink gold-filled horizontal checker-board pattern with vertical three rows of geometric patterns. Floral repousse crown. Incredibly beautiful! Fine nib. Near mint.	\$2400
8	Tiffany & Co.	1928	#6 LF in 14K Solid Gold. Alternating 1/4" horizontal banding and vertical fluting. Barrel signed "Tiffany" just below the gripping section. Warranted medium/broad nib. New-old-stock. Mint in original signed Tiffany box.	\$750
9	Montblanc	1935	128 PL Push knob-fill in Platinum. Perhaps Montblanc's most spectacular celluloid! GFT. 2-toned nib. Near mint+ [Two available: (1) fine nib; (1) medium nib.]	\$3900





10	Zerollo	1935	"Twopen" double nibbed Matchstick-filler in Blue Pearl Marble. The cap top is unscrewed to access the stick used to fill the pen! GFT. These came in two sizes, this is the smaller model. Sports two separate reservoirs, one for each of the "J.D. Zerollo" nibs, to accommodate two different color inks. Turn the bottom knob to propel one nib, turn in the other direction to propel the other. Extremely rare! Both nibs are fine, flexible. New-old-stock. Absolutely mint in original Zerollo signed Art Deco box. You'll never find one in better condition!	\$9000
11	Omas	1939	Extra Lucens Large plunger-fill set in Black. Highly visualated "wide spiral" barrel. GFT. Fine, flexible nib. New-old-stock. Mint in original box.	\$1950
12	Omas	1939	Twist-activated pencil for above set. Mint	Set
13	Pilot	1977	Buddhist Scriptures Custom cartridge/converter-fill in Sterling Silver. Cap & barrel hand engraved with Kanji characters of the Heart Sutra, the best known of the Buddhist scriptures. I am told that these were made for employees, with only a few "escaping" the Hiratsuka, Japan factory. Clip with inlaid black enamel. Inlaid nib (fine) with 1977 date code. New-old-stock. Mint in original box with converter, papers and outer box. Came in three models: red, black and smooth sterling silver, with the sterling silver the rarest.	\$3000
14	Montblanc	1946	139 Meisterstück PIF in Black Celluloid. GFT, except for outer cap bands which are in sterling silver. Visualated barrel with the vertical pinstripping. 3-tone 14C medium nib, with a tad of flex. Just a little wear to the barrel lines, otherwise near mint+.	\$3300
15	Montblanc	1955	149 Meisterstück PIF in Black Celluloid. GFT, except for the sterling silver outer cap bands. 3-tone, 14C broad nib. Visualated barrel, with perfect vertical lines. Near mint + (could be new-old-stock).	\$2200
16	Montblanc	1992	Hemingway PIF LE in Cardinal with Black cap. GPT. Visualated barrel. 2-tone 18K broad, italic nib. New-old-stock. Mint. No box or papers.	\$2200
17	Parker	1949	51 Aerometric-fill in Black with 18K Scalloped (Barley) cap. The 14K Scalloped cap is rare, the 18K version several fold rarer!! Pen USA made; cap with French Hallmarks. Fine nib. New-old stock. Mint with perfectly clear plyglass.	\$2000
18	Namiki	2000	Emperor Plunger-fill in Red Urushi Lacquer. GPT. Huge nib, imprinted "18 Karat Gold Namiki <B> Registered Patent Office -50-." Ven the feed is red urushi lacquer! New-old-stock. Mint in original wooden box with papers. An incredible pen which is long out of production.	\$1750
19	Omas	2010	Paragon Oversize Faceted Demonstrator piston-fill in Clear Acrylic. GPT. Very rare, with only 4 or 5 known to exist. The long metal gripping section in Vermeil (gold-plate on sterling silver). Cap band imprinted "The Paragon Italy." I don't think you'll find another! Two-tone, medium/broad, 18K nib. New-old-stock. Mint.	\$1100





	Limited Editions			
20	Parker	1965	75 Spanish Treasure LE cartridge/converter-fill in sterling silver Cisele. 4821 pens in the edition. Made from silver doubloons salvaged from a sunken Spanish galleon. Also has a notarized Certificate of Authenticity. Complete with a very rare replica of the doubloon along with a description on parchment paper. "66" (medium) nib. New-old-stock. Mint in original box.	\$1400
21	Parker	1965	75 Spanish Treasure LE Classic Ball Pen in sterling Silver Cisele pattern. Made from silver doubloons salvaged from a sunken Spanish galleon. Complete with a replica of the doubloon along with a description on parchment paper. New-old-stock. Mint in original box.	\$1000
22	Parker	1976	Set of LE pewter buttons (4 large & 5 small) which are exact replicas of those worn by the Massachusetts 10th Regiment which distinguished itself during the Revolutionary War. In a laser engraved wooden storage/display case. Mint with outer sleeve.	\$300
23	Parker	1976	75 Americana Pewter Ball Pen - Fiber-Tip set LE #5318/10000 in brushed Pewter. Comes in the red velvet lined, hinged, covered desk stand, replicating a colonial writing stand. Made to commemorate the 200th year of the declaration of US independence. In the cap tassie of both pens is a piece of wood from Independence Hall. The shape of the clip represents a bell clapper. New-old-stock. Mint in original box with all original packaging.	\$1500
23A	Parker	1976	Ball Pen for above set. Operates like a rollerball (remove cap to use).	Set
24	Parker	1979	180 Retirement Pen cartridge/converter-fill in greenish Stippled Brass. The 180 sports the reversible nib with two writing widths (extra-fine; medium). This was never sold and was only given to employees at the time of their retirement. This one was awarded to Ruth A. Roberts. New-old-stock. Mint in original box.	\$450
24A	Stipula	1990	Il Dono #720/988 eyedropper and cartridge/converter-fill in Black with sterling silver hammered turning knob and figural cap. The sculptured cap depicts Greek mythologies story of the dispute between Poseidon and Athena. 18K, medium/broad nib. New-old-stock. Mint with all original packaging.	\$750
25	Omas	1992	Europa #2531/3500 PIF in faceted Blue. The gold-filled cap band, adorned with stars and an inlaid diamond set in the star just below the clip. Comes in a unique hinged transparent box (weighing almost 3 lbs). 2-toned 18K, broad nib. New-old-stock. Mint with all original packaging.	\$500
26	Pelikan	1995	Wall Street PIF LE 2848/4500 in Grey Pearl with Black cap. GPT. 2-tone 18K fine nib. New-old-stock. Mint in original box with papers and outer box..	\$800
27	Omas	1995	Marconi PIF LE #1527/4000 in solid Sterling Silver with horizontal banding representing radio waves. Gold-plate clip and cap band. Midnight blue barrel. Celebrates 100 years of radio. New-old-stock. Mint in original box with papers and outer box. Will polish on request.	\$600



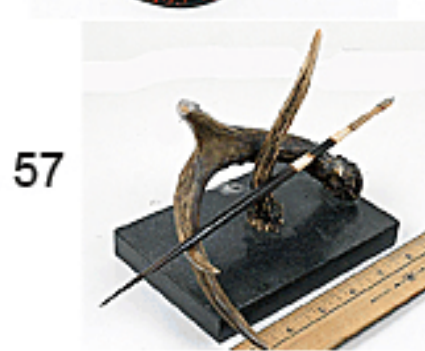


28	Parker	1995	Duofold Centennial cartridge/converter-fill LE #08711 in Yellow. GPT. 18K medium nib. New-old-stock. Mint in original box with papers and outer box.	\$900
29	Montblanc	1995	Voltaire PIF LE #07876/20000. GPT, with chased design on gold-plated crown. 18K medium nib. New-old-stock. Mint in original box with papers and outer sleeve.	\$900
30	Parker	1995	Duofold MacArthur LE #1144/1945 cartridge/converter-fill in Cardinal. 2-Tone 18K medium nib. New-old-stock. Mint in original box with converter & papers (Certificate of Authenticity missing).	\$1000
31	Delta	1996	Colosseum LF LE #1332/1926 in Yellow Pearl with Black cap. Sterling silver trim. 2-tone 18K medium nib. New-old-stock. Mint in original box with papers, outer box, sleeve and ink bottle.	\$550
32	Visconti	1998	Casanova Etotica (Erotic Art) plunger-fill LE #069/1069 (is there some significance to the LE number of this particular pen!?!). Plunger-fill, but also comes with an eyedropper! 2-tone 18K medium nib. New-old-stock. Mint in original box with papers, outer box and sleeve.	\$600
33	Montegrappa	1998	Tertio Millennio Adveniente PIF LE #0695/1912 in Yellow Pearl. Sterling silver & enamel overlay with angels, sun, clouds and a depiction of a stained glass window. Cap with sterling silver crown. 2-tone 18K medium nib. New-old-stock. Mint in original box with papers.	\$1550
34	Jean Pierre Lepine	2000	"Cybergraph" with matching ink pump & screwdriver LE #0224/2000 in Palladium. A screw in the barrel is removed (hence the matching screwdriver) and the external ink pump screwed into the "docking station" to fill the pen (Lepine didn't want the user to need to dip the pen.! Visualated barrel with planets inside. Cap held on by ball bearings. Medium/broad nib. Unused (new-old-stock), but the palladium shows some wear and a few minor pinpoint dings.	\$700
35	Visconti	2000	Sassuolo Lux LE 312/1000 cartridge-converter-fill in Black. Only 599 produced (+400 produced in Orange). White outline of the Ducal Palace in Sassuolo on black Lucite barrel. Engine-turned Rhodium plate cap bands. Two-toned 18K nib (extra-fine). New-old-stock. Mint with converter.	\$300
36	S.T. Dupont	2002	Statue of Liberty Rollerball LE 261/350 in Green Chinese Lacquer. Palladium-plated cap with modern day interpretation of the statue in guilloche work. New-old-stock. Mint in original box with papers and outer box.	\$1000
37	Omas	2005	Omas Society PIF PE of 700 in Sterling Silver & Blue gripping section. Very rare - only available to members of the Omas Society! Horizontal banding on both the cap and barrel. 2-tone extra-fine nib. New-old-stock. Mint. Will polish on request. <b>(8) More Limited Editions follow below.</b>	\$350





Rebecca Moss Pens - New York City				
This high-end Madison Ave. shop, now closed, was owned by Sam Zagoory. It made it onto Oprah's "O" List for its offering of fine leather goods and writing instruments as well as offbeat items, some designed for same-sex marriages.				
38	Omas	2000	Paragon PIF LE 12/100 in Green Mbl Celluloid. Exclusive to R. Moss. Rhodium-plate trim. 18K fine nib. New-old-stock. Mint. Part of a matched set of 5 pens, all LE#12. Buy all Five @ \$1500.	\$325
39	Omas	2000	Paragon PIF LE 12/100 in Blue Royale Marble Celluloid. Exclusive to Rebecca Moss. Rhodium-plate trim. 18K medium nib. New-old-stock. Mint. Part of a matched set. Buy all Five @ \$1500.	\$325
40	Omas	2000	Paragon PIF LE 12/100 in Grey Pearl Marble Celluloid. Exclusive to Rebecca Moss. Rhodium-plate trim. 18K fine nib. New-old-stock. Mint. Part of a matched set. Buy all Five @ \$1500.	\$325
41	Omas	2000	Paragon PIF LE 12/100 in Red Marble Celluloid. Exclusive to Rebecca Moss. Rhodium-plate trim. 18K fine nib. New-old-stock. Mint. Part of a matched set. Buy all Five @ \$1500.	\$325
42	Omas	2000	Paragon PIF LE 12/100 in Golden Arco Celluloid. Exclusive to Rebecca Moss. Gold-plate trim. 18K broad nib. New-old-stock. Mint. Part of a matched set. Buy all Five @ \$1500.	\$500
43	Visconti	2002	Verona PIF LE #030/365 in Translucent Cobalt & Blue. Exclusive to Rebecca Moss. Sterling Silver trim. Visualated barrel. 2-tone 18K extra-fine nib. New-old-stock. Mint	\$300
44	Visconti	2002	Verona PIF LE #008/365 in Translucent Red. Exclusive to Rebecca Moss. Sterling Silver trim. Visualated barrel. 2-tone 18K extra-fine nib. New-old-stock. Mint	\$300
45	Visconti	2002	Verona PIF LE #033/365 in Translucent Pink. Exclusive to Rebecca Moss. Sterling Silver trim. Visualated barrel. 2-tone 18K extra-fine nib. New-old-stock. Mint	\$300
46	Visconti	2002	Exclusive to Rebecca Moss, flat-top cartridge/converter-fill in translucent White Pearl. Sterling Silver trim. 2-tone 18K extra-fine nib. New-old-stock. Mint.	\$325
47	Visconti	2002	Exclusive to Rebecca Moss, flat-top cartridge/converter-fill in Green Pearl with Black Veins. Sterling Silver trim. 2-tone 18K extra-fine nib. New-old-stock. Mint with original barrel label.	\$325
48	Visconti	2002	Exclusive to Rebecca Moss, flat-top cartridge/converter-fill in Bronze Pearl with Black Veins. Sterling Silver trim. 2-tone 14K fine nib. New-old-stock. Mint with original barrel label.	\$325



Desk Sets & Ink Wells				
49	Anonymous	1987	"Stag" Inkwell - Penholder in cast metal. Probably English. Two glass inkwells. Holds 5 or 6 pens. Two porcupine quill pen holders included. Near mint.	\$175
50	Anonymous	1875	English brass inkwell with pen rest. Mother-of-Pearl handled pen included. Footed square base with Oriental design. Two handles. Raised repousse design on the center inkwell and hinged lid. Porcelain ink insert. Near mint.	\$300
51	Anonymous	1875	English copper and brass inkwell on raised pedestal base. "Greek Key" design around the tray and top of well, just below the hinged lid. Two round handles. Glass ink insert. Near mint.	\$325
52	Conklin	1927	Endura Jr. Desk Set in Sapphire Blue. GFT. Strikingly beautiful! Matching pen with fine nib. Fitted with a silicone sac. Near mint.	\$400
53	Waterman	1927	"Hemisphere" LF Desk Set in Black Hard Rubber. Waterman's most iconic desk base, in a huge hunk of black hard rubber. The pen has a built in pencil in the other end! #2, medium/fine nib. GFT. Near mint.	\$650
54	Waterman	1927	"Hemisphere" LF Desk Set Red Ripple Hard Rubber. #4, nib. Waterman's most iconic desk base, in a huge hunk of red ripple hard rubber! Pen holder in BHR. GFT. Fine, extra-flexible nib. Near mint.	\$1000
55	Parker	1935	Vacumatic Standard Convertible Pen -Desk Set in Silver Laminated. GFT. Comes with both a traditional blind cap plus the desk pen taper. Glass base with matching "laminated" design to match the pen! Two-toned, medium nib with a touch of flex.. New-old-stock. Mint in original box.	\$700
56	Anonymous	1875	French gilt-bronze inkwell with large onyx base. Base with recessed area for pen storage. Each side of the hinged inkwell with an inlaid porcelain cameo, one depicting a minstrel performing for two women, the other depicting a scholar reading to two women. The hinged inkwell holder itself with raised repousse floral and vine design. Glass inkwell insert. Near mint.	\$425
57	Anonymous	1920	"Antler" pen holder on black marble base. Porcupine quill pen included. Near mint.	\$55





Featured: Mint-in-the-Box Pens, Pencils, Sets - Perfect for Holiday Gifts Up to \$100 - Sorted by Price				
58	Parker	2000	Jotter button-activated ball pen in Black with Lustraloy (brushed stainless steel) cap. New-old-stock. Mint in original box. [Three available. Ask for a color and we'll see if we have it for you].	\$15
59	Cross	2000	"Selectip" or Rollerball in pinstriped polished chrome. Come with both refills, which are readily available in most office supply shops! Near mint in box with outer sleeve.	\$25
60	Cross	1975	Ball Pen in 1/20 12K Gold-filled "Fine Pinstriped" pattern, with black crown. Twist activated. New-old-stock. Mint in original box with papers. Dated from copyright date on papers.	\$25
61	Cross	1975	Model 4502 Ball Pen in 1/20 10K Gold-filled "Fine Pinstriped" pattern, with black crown. Twist activated. New-old-stock. Mint in original box with papers and outer sleeve.	\$25
62	Warner Brothers	2000	Ball pen. Triangular shape and heavy. One side had engravings of Bugs Bunny, Tweety Bird, Daffy Duck, the Tasmanian Devil and Sylvester the Cat, with black inlaid enamel. The perfect gift for the cartoon character lover! New-old-stock. Mint in original box.	\$45
63	Monteverde	2001	"Black Tie" Rollerball in Carbon Fibre & Chrome. New-old-stock. Mint in box with outer sleeve.	\$50
64	Harley Davidson	1995	Ball Pen in Black. CPT with inlaid orange bands. Twist-activated. New-old-stock. Mint in original cardboard box.	\$50
65	Harley Davidson	1995	Ball Pen in Metallic Blue. CPT with inlaid orange bands. Twist-activated. New-old-stock. Mint in original cardboard box.	\$50
66	Harley Davidson	1995	Ball Pen in Black. CPT with inlaid orange bands. Twist-activated. This one with a knurled cap band (the other two have horizontally chased cap bands). Oval emblem just below the clip reads "Harley Davidson Motorcycles). New-old-stock. Mint in original metal box.	\$50
67	Tombow	1999	"Modena Majestic" cartridge/converter-fill in Polished Chrome, Roman numerals depicting III VI IX XII (3, 6, 9, 12) on cap band. GPT Gold-plate medium nib. New-old-stock. Mint in original box with converter and outer box.	\$50
68	Tourneau	1990	3001 Rollerball in Heavy Fluted Gold-plate. New-old-stock. Mint in original box with outer box.	\$65



## Blue Trim!



69	Parker	1976	Window Jotter in Blue. Button-activated with Lustraloy (brushed stainless steel) cap. Barrel imprinted "The Parker Pen Company Janesville Wisconsin 87 <sup>th</sup> Annual Report Fiscal Year Ended February 29 Sales \$ Millions...Other Per Share 1976 1975." Pressing the button displays various year end financial data in the barrel window. New-old-stock. Mint in original box.	\$65
70	Parker	1978	25 <sup>th</sup> Anniversary Jotter in Blue. Button-activated with Lustraloy (brushed stainless steel) cap. Barrel imprinted "Arrow Park 25 <sup>th</sup> Anniversary 1953-1978. These are very rare, as they were not sold but only given to staff, staff families, retirees and special guests of the Anniversary event. New-old-stock. Mint in original box.	\$65
71 72	Yafa	1990	"CCCP Red Star" cartridge/converter-fill set in Brushed Stainless Steel. Gold-plate fine nib. Paperwork explains, "Eastern accessories for Western Gentlemen. Yafa continuously searched the world over for items which are elegantly designed and functional..." Made in West Germany. New-old-stock. Mint in original wooden box with papers, cartridge and converter. Inlaid "red star" in both cap tops. Ball pen for above set (operated like a rollerball).	\$75
73	Sheaffer	1970	550 Imperial cartridge/converter-fill in Black. GFT. Broad nib. New-old-stock. Mint in original box with papers, cartridges, converter & outer sleeve. The cap with it's model number/nib size label.	\$75
74	Parker	1979	25 Fighter Rollerball in Lustraloy (brushed stainless steel) and Blue trim (very rare). New-old-stock. Mint in original box with papers. [Buy with pencil below at \$125].	\$75
75	Parker	1979	25 Fighter Repeater Pencil in Lustraloy (brushed stainless steel) and Blue trim (very rare). Cap-activated. New-old-stock. Mint in original box with papers.[Buy with rollerball above at \$125].	\$75
76- 77	Morrison	1920	#4 LF ring-top set in gold-filled "Wave Chased" pattern on Black Hard Rubber. Fine, flexible nib. New-old-stock. Mint in original box. Twist-activated pencil.	\$75
78	Parker	1960	45 Fighter cartridge/converter-fill in Lustraloy (brushed stainless steel). GPT. Semi-hooded, medium/fine nib. New-old-stock. Mint in original box with converter.	\$75
79- 80	Parker	1951	51 Special Aerometric-fill set in Blue. Polished chrome caps. Medium/fine nib. A reduced version of the 51, designed to capture a lower price point in the market. The biggest difference was the "octanium" nib (instead of gold) made from an alloy of 8 ("oct") different metals. Medium/fine nib. New-old-stock. Mint in original box. Twist-activated pencil.	\$95





81	Parker	1950	21 Aerometric-fill Mark II Deluxe in Black with 1/10 12K gold-filled "Smooth" cap with matching GF cap jewel (rare). Fine "Octanium" nib. New-old-stock. Mint in original box with papers.	\$100
82	Sheaffer	1949	White Dot Triumph touchdown-fill in Dark Blue. GFT. Visualated section. Fine nib. New-old-stock. Mint in original box. Nib size label on section. Original price tag on barrel.	\$100
83	Norma	1945	4-Color Pencil in Gold-filled. Alternating wave chased and plain panels. Cap engraved in Olde English "GC CK." New-old-stock. Mint in original box with papers.	\$100
84	Parker	1979	Classic Ball Pen in Sterling Silver "Cisele" (crosshatch) pattern. Button-activated. GFT. New-old-stock. Mint in original box with papers and outer sleeve. Will polish on request.	\$100
85	Sheaffer	1985	#1005 Thin Targa cartridge/converter-fill in Gold-electroplate. Inlaid medium nib. New-old-stock. Mint in original box with outer box, papers, converter, cartridges and outer sleeve. The cap still with its original model number/nib size/price label.	\$100
86	Sheaffer	1989	#1001 Targa cartridge/converter-fill in Brushed Stainless Steel. Chrome clip. Inlaid palladium nib (medium/fine). New-old-stock. Mint in original box with converter and papers.	\$100
87	Parker	1990	95 Flighter 3-piece cartridge/converter-fill set in Lustraloy (brushed stainless steel). GPT. Gold-plated medium nib. New-old-stock. Mint in original box with converter.	\$100
88	Parker	1990	Rollerball for above set.	Set
89	Parker	1990	Button-activated repeater pencil for above set.	Set
90	Tourneau	1990	3001 cartridge/converter-fill set in Blue & Bronze Chinese Lacquer. GPT. Gold-plate medium nib. New-old-stock. Mint in original box with outer box. [Three available; buy all three at \$250].	\$100
91	Tourneau	1990	Twist-activated ball pen for above set	Set
92	Samson Mordan & Co	1907	Bookmark in 925 Sterling Silver in the shape of a cat's head. London made by this very famous manufacturer. English hallmarks. Near mint in box (box not original to the item).	\$100





Featured - Mint-in-the-Box Pens, Pencils, Sets - Perfect for Holiday Gifts Over \$100 - Sorted by Brand				
93	Caran d'Ache	2008	Ecridor Retro Collection 6-sided cartridge/converter-fill in Rhodium-plate "Barley" pattern. Rhodium-plate medium nib. New-old-stock. Mint in original box with papers, cartridges, converter and outer sleeve..	\$125
94	Eclipse	1925	#8 (6 size nib) LF Set in Woodgrain plastic. GFT. Correct warranted nib (medium, flexible). New-old-stock. Pen still with its original label. Mint in original box with instructions (both a little threadbare).	\$300
95	Eclipse	1925	Twist-activated pencil for above set.	Set
96	Eversharp	1995	Skyline "Yellow Cab" cartridge/converter-fill in Yellow. GPT. Broad nib. New-old-stock. Mint in original box with papers and the metal replica of a vintage yellow cab!	\$150
97	Mabie Todd	1947	Swan #3230 LF set in Battleship Grey. GFT. Medium, flexible, italic nib. New-old-stock. Mint in original box.	\$150
98	Mabie Todd	1947	Twist-activated pencil for above set.	Set
99	Morrison	1930	#6 LF in Sterling Silver "Filigree" on Black Hard Rubber. An amazingly large and beautiful Morrison! Fine nib. Near mint.	\$400
100	Morrison	1920	#3 LF set in gold-filled "Wave Chased" pattern on Black Hard Rubber. Medium/fine nib. New-old-stock. Mint in original box with original labels and papers (papers in torn condition).	\$200
101	Morrison	1920	Twist activated pencil for above set.	Set
102	Morrison	1920	#4 LF ring-top in gold-filled "Wave Chased" pattern on Black Hard Rubber. Medium nib. New-old-stock. Mint in original box with original labels and papers.	\$110
103	Morrison	1920	Twist activated pencil for above set.	Set





104	Norma	1945	4-Color Pencil in Chrome with Black cap. Barrel is "Diamond" chased. New-old-stock. Mint in original form-fitted, velvet lined box.	\$125
105	Parker	1926	Duofold Sr. "Big Red" BF in Red Hard Rubber. The "Small" imprint was used from 1926 on. GFT. Medium/fine nib. The slightest color difference on the barrel where it is protected by the cap, otherwise mint. New-old-stock. Mint in original box.	\$625
106	Parker	1930	Duofold Sr. BF set in Burgundy (Red Marble) streamlined. GFT. Fine nib. Pen Canadian manufacture; pencil made in USA. New-old-stock. Mint in original box.	\$650
107	Parker	1930	Twist-activated pencil for above set.	Set
108	Parker	1935	Duofold Sr. Set BF in Black & Pearl. GFT. Generally found with some cap and/or barrel ambering, this set is absolutely mint color and condition! Fine nib. New-old-stock. Mint in original box.	\$900
109	Parker	1935	Twist-activated pencil for above set.	Set
110	Parker	1970	75 Place Vendome cartridge/converter-fill in "Cisele" (crosshatch) in 22K gold-electroplate. Extra-fine nib. New-old-stock. Mint in original box with converter.	\$125
111	Parker	1972	61 Fighter cartridge/converter-fill in Lustraloy (brushed stainless steel). Note: not the earlier capillary-fill! UK manufacture. GFT. Medium nib. New-old-stock. Mint in very original unusual plastic "sliding drawer" box with papers.	\$250
112	Parker	1974	75 cartridge/converter-fill in sterling silver "Cisele" (crosshatch) pattern. GFT. Medium nib. New-old-stock. Mint in original box with converter.	\$175
113	Parker	1993	Sonnet cartridge/converter-fill in Sterling Silver "Cicele" (crosshatch). GPT. 18K medium nib. New-old-stock. Mint in original box with papers, hanging clip label and outer sleeve.	\$125
114	Pelikan	1940	100CN in Green Pearl (unusually deep green). GPT. Wartime model, with fluted clip and cap band. Chromium/nickle double-broad, italic nib. New-old-stock. Mint in original box. Box factory marked for the "BB" nib!	\$375



Check  
Protector



115	Pelikan	1950	100N PIF set in Green Pearl. GFT. Fine nib. Visualated barrel. New-old-stock. Mint in original green leather zipper pouch.	\$475
116	Pelikan	1950	Button-activated repeater pencil for above set.	Set
117	Pelikan	1956	400NN PIF in Brown Striped. GFT. Medium nib. New-old-stock. Mint in original box with pouch and papers.	\$250
118	Pelikan	2011	M101 PIF in Tortoise. GPT. Pelikan's recent sold-out reproduction of their famous 1930's tortoise line of pens. Visualated barrel. Medium nib. New-old-stock. Mint in original box with papers and outer sleeve.	\$450
119	Security	1938	Security #8 "Giant" Twist-fill in Red Mottled Hard Rubber. Inside the top of the cap is the check protector with it's rotating blades used to perforate the check so it could not be altered. Medium nib, with a tad of flex. Comes with a tube of the original ink used with the check protector. Near mint++ in original box.	\$900
120	Sheaffer	1959	Imperial Triumph touchdown-fill set in gold-filled. Alternation pinstripes and plain panels. Fine nib. New-old-stock. Mint in original box with papers and original model label on pen cap.	\$250
121	Sheaffer	1959	Twist-activated pencil for above set.	Set
122	Sheaffer	1959	PFM V Snorkel-fill set in Green with gold-filled caps. Fine nib. New-old-stock. Mint in original box. Both barrels still with original chalk marks.	\$575
123	Sheaffer	1959	Twist-activated pencil for above set.	Set
124	Sheaffer	1959	PFM V set in Grey with GF caps. Grey is the rarest color! Fine nib. New-old-stock. Mint in original box.	\$650
125	Sheaffer	1959	Clip-activated ball pen for above set.	Set





126	Sheaffer	1960	Nostalgia cartridge/converter-fill in Sterling Silver "Filigree" pattern on Black. Medium nib. New-old-stock. Mint in original box with converter, cartridges and outer box.	\$450
127	Sheaffer	1976	#1007 Targa cartridge/converter-fill in Gold-electroplate "Small Squares" pattern. Inlaid double-broad/triple-broad nib! New-old-stock. Mint in original box with papers, cartridge, converter and outer sleeve. Cap has original model number/nib size label. Box has original price tag "University Bookstore #1007 Broad \$50.00."	\$150
128	Sheaffer	1976	Imperial Touchdown-fill set in Sterling Silver "Diamond Crosshatch" pattern. Medium nib. New-old-stock. Mint in original box. Pen cap with original model number/nib size label (unreadable).	\$300
129	Sheaffer	1976	Clip-activated ball pen for above set.	Set
130	Sheaffer	1985	Targa 1034-0 cartridge/converter-fill in Red Ronce Lacquer. GPT. Medium nib. New-old-stock. Mint in original box with converter, cartridges, papers and outer sleeve.	\$200
131	Sheaffer	1989	Targa 1001 3-piece cartridge/converter-fill set in Brushed Stainless Steel. Chrome clips. Inlaid palladium nib (fine). New-old-stock. Mint in original box with converter, papers, cartridges and outer sleeve.	\$200
132	Sheaffer	1989	Twist-activated ball pen for above set.	Set
133	Sheaffer	1989	Twist-activated pencil for above set.	Set
134	Soennecken	1954	111 Superior in Black with Silver Hashmarks. GFT. Visualated barrel. Medium, flexible nib. New-old-stock. Mint in original box.	\$950
135	Soennecken	1954	Button-activated repeater pencil for above set.	Set
136	Stipula	2001	Eturia PIF in Ambrosia (Golden Pearl speckle on an amber transparent celluloid background). Sterling silver trim. Medium, flexible, TITANIUM nib. New-old-stock. Near mint++ in original box with papers.	\$275





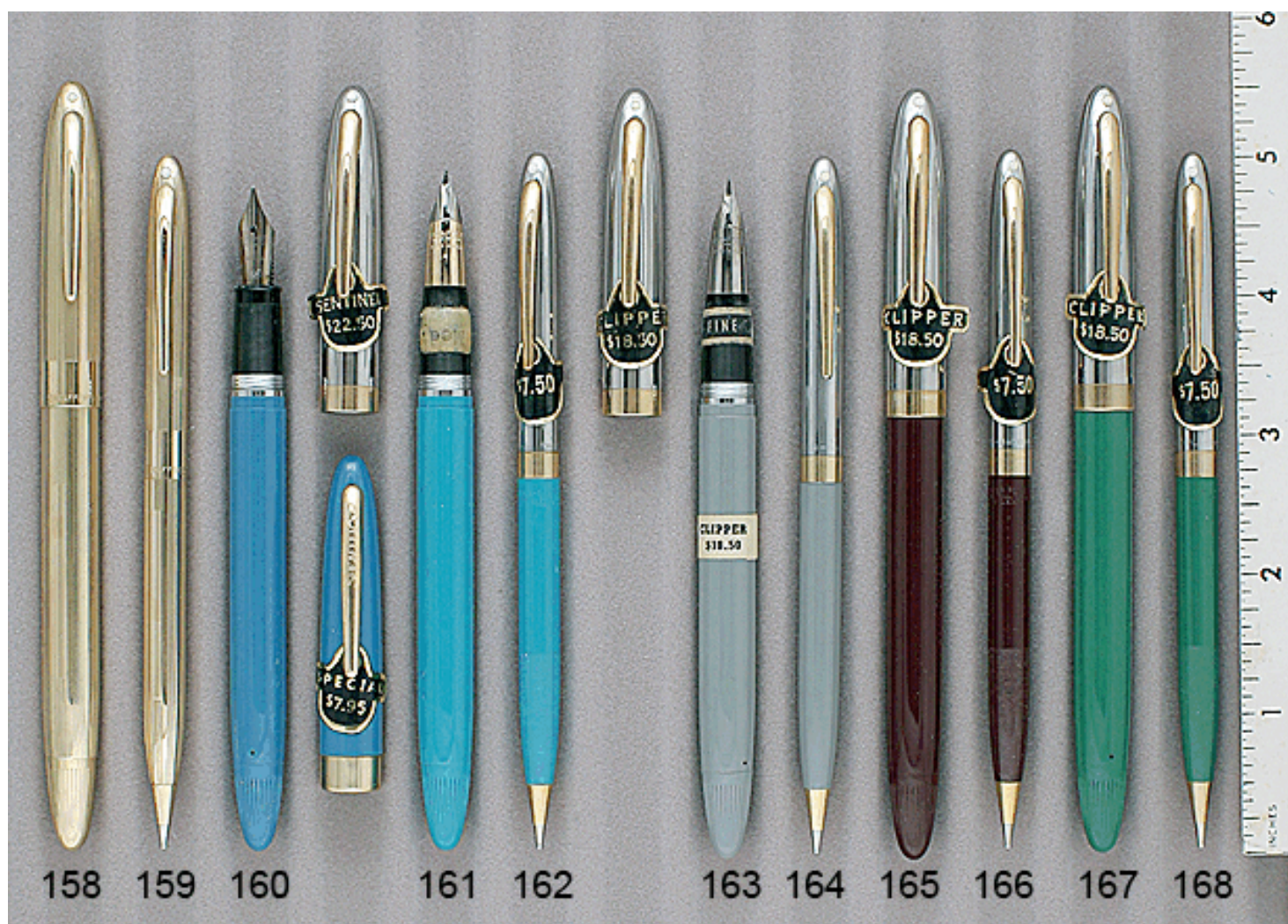
137	Waterman	1917	42 ½ Continental Safety eyedropper-fill in 18 KR (gold-filled) with engine-turned "Diamond" pattern on a pinstriped background. Extra-fine, extra-flexible nib. Two small dings in the barrel (reflected in the price) otherwise near mint in form-fitted box with papers.	\$400
138	Waterman	1941	100 Year LF set in Blue, with fully ribbed barrels and ribbed caps. GFT. Fine, flexible, italic nib. New-old-stock. Mint in original box with guarantee.	\$450
139	Waterman	1941	Twist-activated pencil for above set.	Set
140	Waterman	1941	100 Year LF in Black. GFT. Very handsome with it's three barrel bands! Double-broad, italic nib! New-old-stock. Mint in original box with papers.	\$350
141	Waterman	1942	Commando LF in Black. GFT. Medium/fine, flexible nib. New-old-stock. Mint in original box.	\$200
143	Waterman	1955	Jewelry set with tie clip, money clip, cuff links and CF cartridge/converter-fill set in red with smooth gold-plated caps. Grey gripping section with chrome inlay and 14K nib (medium/fine). Cartridges included. New-old-stock. Mint in original box.	\$125
144	Waterman	1955	Twist-activated pencil for above set.	Set
145	Waterman	1990	LeMan Opera 100 cartridge/converter-fill in Black Chased Hard Rubber over brass. GPT. Two-toned, 18K fine nib. New-old-stock. Mint in wooden presentation box with papers and outer box. Converter included.	\$300
146	Waterman	1992	Patrician cartridge/converter-fill in Jade. GPT. 2-Tone 18K fine nib. New-old-stock. Mint in deluxe wooden box with converter and white outer box. [Two available, the second in a matching green deluxe wooden box, to coordinate with the green pen].	\$375
147	Waterman	1992	Patrician cartridge/converter-fill in Cardinal Red. GPT. 2-Tone 18K fine nib. New-old-stock. Mint in deluxe wooden box with converter, papers and white outer box.	\$400





Montblanc - Mint in the Box				
148	Montblanc	1955	146 Meisterstück PIF in Black Celluloid. Early model. GFT. Visualated barrel with black lines. Medium, extra-flexible nib. New-old-stock. Mint in original box.	\$900
149	Montblanc	1972	149 Meisterstück PIF in Black. GPT. 2-tone 14C medium nib. Hard rubber feed. Visualated barrel. New-old-stock. Mint in original box.	\$600
150	Montblanc	1972	149 Meisterstück PIF in Black. GPT. 2-tone 14C medium nib. Hard rubber feed. Visualated barrel. New-old-stock. Mint in original box.	\$600
151	Montblanc	1972	149 Meisterstück PIF in Black. GPT. 3-tone 14C medium/broad, oblique, italic flexible nib (very rare!!) Hard rubber feed. Visualated barrel. New-old-stock. Mint in original box with papers and original barrel nib size and "Germany" labels.	\$700
152	Montblanc	1975	149 Meisterstück PIF in Black. GPT. 2-toned 14C nib. Hard rubber feed. Visualated barrel. New-old-stock. Mint in velvet lined, form-fitted original box with papers and ink bottle. A little wear to the outside of the box. This model was introduced in 1975, but the papers show it was sold in 1979 by the Art Brown Pen Shop in NYC (just recently went out of business).	\$550
153	Montblanc	1991	149 Meisterstück PIF in Black. GPT. 2-tone 14K broad nib. Hard rubber feed. Visualated barrel. New-old-stock. Mint in original box, with original barrel nib size label.	\$500
154	Montblanc	1991	146 Meisterstück PIF in Black. GPT. 2-Toned fine nib. Visualated barrel. New-old-stock. Mint in original box.	\$300
155	Montblanc	1994	149 Meisterstück PIF in Black. GPT. 3-tone 18K nib. Visualated barrel. New-old-stock. Mint in original box.	\$450
156	Montblanc	1996	149 Meisterstück PIF in Black. GPT. 3-tone 18K broad nib. Visualated barrel. New-old-stock. Mint in original box, with ink and outer box.	\$500
156A	Montblanc	2005	149 75 <sup>th</sup> Anniversary Meisterstück PIF in Black with Rose Gold Trim! Special Edition #0288/1924. The ring above the clip reads "75 Years of Passion and Soul" and sports a diamond. 2-tone 18K medium nib. New-old-stock. Mint in original box with papers and outer sleeve.	\$1200
157	Montblanc	2010	Lead Crystal Inkwell with hinged "precious resin" cap and filling funnel. GP accents. Montblanc star and circle imprinted on the top. Clear plastic inkwell liner. New-old-stock. Mint in box with papers. Very rare! List \$690.	\$300





Sheaffer Snorkel - Mint in the Box				
158	Sheaffer	1950	Triumph Snorkel Signet set in gold-filled. Alternating pinstripe and plain panels. 2-tone, wraparound nib (fine). New-old-stock. Mint in original box with papers.	\$375
159	Sheaffer	1950	Twist-activated pencil for above set.	Set
160	Sheaffer	1952	Special Snorkel in Blue. GFT. 1-tone open palladium nib (medium). New-old-stock. Mint in original box with instructions, nib size label on section and price label on cap. Box soiled.	\$95
161	Sheaffer	1952	Sentinel Snorkel set in Peacock Blue (very rare color). Polished, pinstriped chrome caps with GFT. 2-tone, wraparound nib (medium). New-old-stock. Mint in original box with papers, nib size label on gripping section, and price label on both the pen and pencil caps.	\$250
162	Sheaffer	1952	Twist-activated pencil for above set.	Set
163	Sheaffer	1952	Clipper Snorkel set in Grey. 1-tone wraparound palladium nib (fine). Polished chrome pinstriped caps with GF band. New-old-stock. Mint in original box with papers, nib size label on gripping section, and price label on the pen cap.	\$150
164	Sheaffer	1952	Twist-activated pencil for above set.	Set
165	Sheaffer	1952	Clipper Snorkel set in Red. 1-tone wraparound palladium nib (shorthand). Polished chrome pinstriped caps with GF band. New-old-stock. Mint in original box with papers, nib size label on gripping section, and price label on both the pen and pencil caps. The nib size label reads "Shorthand" – I've not seen this before!	\$200
166	Sheaffer	1952	Twist-activated pencil for above set.	Set
167	Sheaffer	1952	Clipper Snorkel set in Green. 1-tone wraparound palladium nib (medium). Polished chrome pinstriped caps with GF band. New-old-stock. Mint in original box with box label, nib size label on gripping section, and price label on both the pen and pencil caps.	\$175
168	Sheaffer	1952	Twist-activated pencil for above set.	Set





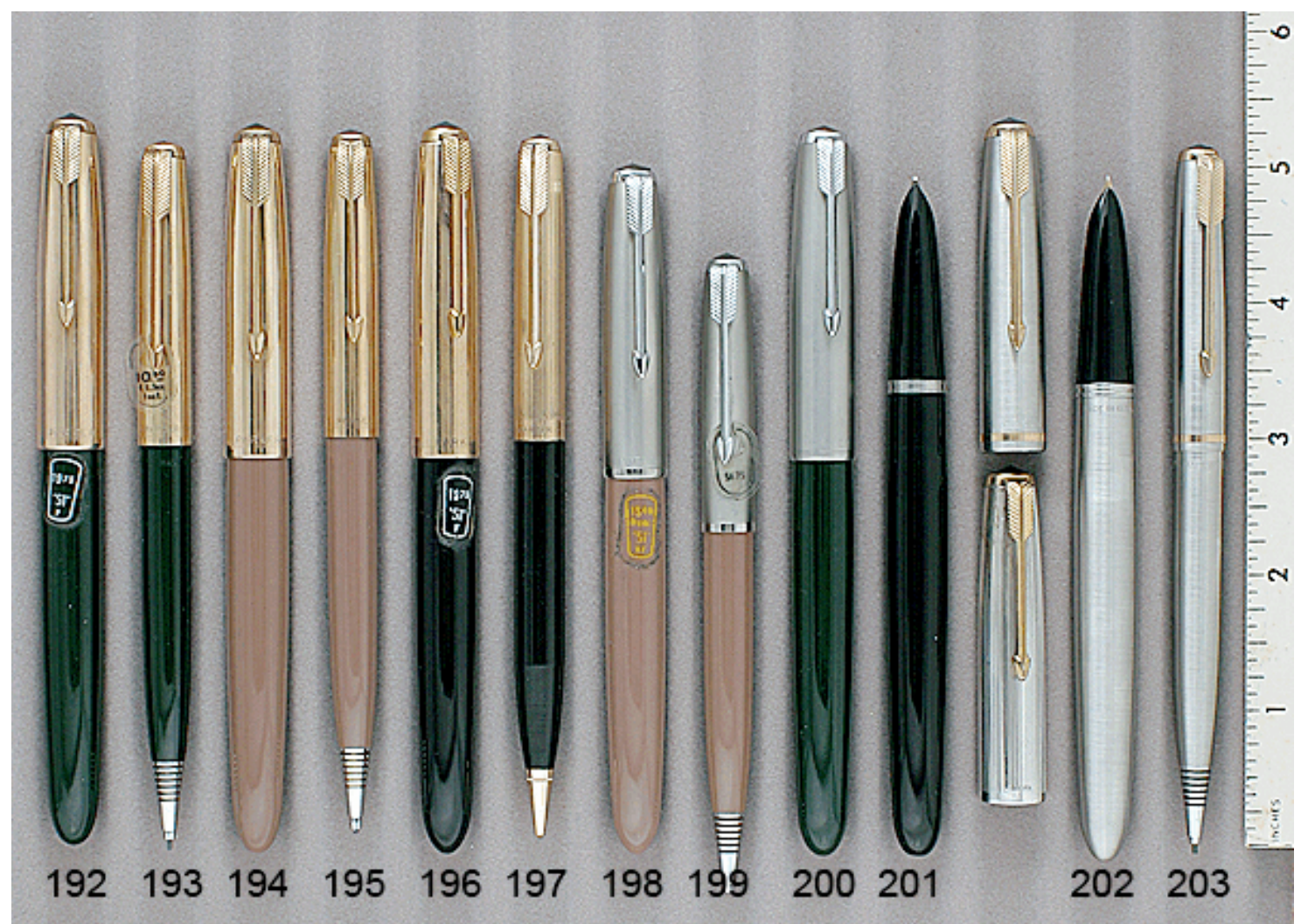
169	Sheaffer	1952	Statesman Snorkel set in Blue. GPT. 1-tone wraparound palladium nib (medium). New-old-stock. Mint in original box with papers, nib size label on gripping section, and price label on both the pen and pencil caps.	\$175
170	Sheaffer	1952	Twist-activated pencil for above set.	Set
171	Sheaffer	1952	Crest Snorkel set in Blue. Gold-filled caps in pinstriped. 2-tone, wraparound nib (fine). New-old-stock. Mint in original box with papers, nib size label and price label on both the pen and pencil caps. One small ding on the pen cap.	\$200
172	Sheaffer	1952	Twist-activated pencil for above set.	Set
173	Sheaffer	1952	Sentinel Snorkel set in Green. Polished, pinstriped chrome caps with GFT. 2-tone, wraparound nib (medium). New-old-stock. Mint in original box with papers, nib size label on gripping section, and price label on both the pen and pencil caps.	\$200
174	Sheaffer	1952	Twist-activated pencil for above set.	Set
175	Sheaffer	1954	Admiral Snorkel Set in Grey, GFT. 1-tone 14K "open" nib (medium/fine). New-old-stock. Mint in original box. Box a bit threadbare.	\$150
176	Sheaffer	1954	Twist-activated pencil for above set.	Set
177	Sheaffer	1954	Admiral Snorkel in Black. GFT. 1-tone 14K "open" nib (medium). New-old-stock. Mint in original box with nib size label on section.	\$125
178	Sheaffer	1954	Admiral Snorkel Set in Green, GFT. 1-tone 14K "open" nib (medium). New-old-stock. Mint in original box.	\$150
179	Sheaffer	1954	Twist-activated pencil for above set.	Set





Parker 51 - Mint in the Box				
180	Parker	1946	51 Vacumatic-fill "Heritage" set in Black. 1/8 14K GF cap in the "Rectangle" pattern. 14K clips, barrel tasse & pencil nozzle. Double jeweled. Fine nib. New-old-stock. Mint in original box.	\$600
181	Parker	1946	Twist-activated pencil for above set.	Set
182	Parker	1947	51 Vacumatic-fill in Cordovan Brown (rare). 1/8 14K GF cap in the "Fully Pinstriped" pattern. Correct transition cap. Fine nib. New-old-stock. Mint in original box.	\$300
183	Parker	1947	Twist-activated pencil for above set.	Set
184	Parker	1947	51 Vacumatic-fill in Cordovan Brown (rare). 1/10 16K GF cap in the "Fully Pinstriped" pattern. Extra-smooth, medium/fine nib. New-old-stock. Mint in original box.	\$300
185	Parker	1947	Twist-activated pencil for above set.	Set
186	Parker	1948	51 Vacumatic-fill set in Black. Lustraloy (stainless steel) caps. Fine nib. New-old-stock. Mint in original box. The pen and pencil caps both with their original price label.	\$300
187	Parker	1948	Twist-activated pencil for above set.	Set
188	Parker	1948	51 Vacumatic-fill in Black. 1/10 14K GF caps in the "Fully Pinstriped" pattern. Medium/fine nib. Correct transition cap. Fine nib. New-old-stock. Mint in original box.	\$300
189	Parker	1948	Twist-activated pencil for above set.	Set
190	Parker	1949	51 Signet Aerometric-fill set in 1/10 14K GF. Alternating 3-pinstripes and plain panels. Medium/fine nib. New-old-stock. Mint in original box. Unusual deluxe box, with original price label.	\$400
191	Parker	1949	Cap-activated repeater pencil for above set.	Set





192	Parker	1950	51 Aerometric-set in Forest Green. 1/10 12K GF caps in the "5-Converging Line" pattern. Fine nib. New-old-stock. Mint in original box with papers. Both pen and pencil with original price label.	\$350
193	Parker	1950	Cap-activated repeater pencil for above set.	Set
194	Parker	1951	51 Aerometric-set in Buckskin (rare). 1/10 12K GF cap in the "5-converging line" pattern. Extra-smooth, fine nib. New-old-stock. Mint in original box.	\$350
195	Parker	1951	Cap-activated repeater pencil for above set.	Set
196	Parker	1951	51 Aerometric-set in Black. 1/10 12K GF cap in the "5-converging line" pattern. Fine nib. New-old-stock. Mint in original box. The pen with original price label on pen barrel	\$300
197	Parker	1951	Cap-activated repeater pencil for above set.	Set
198	Parker	1951	51 Aerometric-set in Buckskin (rare). Lustraloy (stainless steel) caps. Fine nib. New-old-stock. Mint in original box. Both pen and pencil with original price label.	\$200
199	Parker	1951	Cap-activated repeater pencil for above set.	Set
200	Parker	1951	51 Aerometric-fill in Forest Green. Lustraloy (stainless steel) cap. Medium/broad nib. New-old-stock. Mint in original box.	\$200
201	Parker	1952	51 Aerometric-fill in Black. Rolled Silver cap (very rare) in the "5-converging line" pattern. Medium/broad nib. New-old-stock. Just the slightest scar from the clip turning, otherwise mint in original box. A very rare pen indeed!	\$300
202	Parker	1952	51 "Flighter" Aerometric-fill set in Lustraloy (brushed stainless steel). GFT. Medium/fine nib. New-old-stock. Mint in original box.	\$450
203	Parker	1952	Cap-activated repeater pencil for above set.	Set





Alphabetical Pen Section				
204	Ancora	1937	Maxima Small plunger-fill in Green laminated. GFT. Roller-ball clip. This model came in three sizes; small, medium and large. Fine nib. Near mint.	\$1150
205	Autofiller	1905	<b>Unusual filling mechanism!</b> #8 Twist-fill in Black Chased Hard Rubber. Very large pen! To fill, remove the blind cap and twist the small protruding wand which is attached directly to the bladder. Broad, extra-flexible nib. New-old-stock. Mint.	\$600
206	Conklin	1927	Endura Sr. LF in Black & Bronze. GFT. Set off nicely with inlaid yellow bands. Medium/fine nib. Near mint+.	\$525
207	Conklin	1927	Endura Sr. LF in Sapphire Blue. GFT. Set off with inlaid red bands. Medium/broad nib. Near mint	\$500
208	Conklin	1929	Endura Round Oversize LF in Black & Pearl. GFT. Extremely rare, late Endura, transitioning to the round "Symetrik" model. Fine nib. Near mint+	\$1000
209	Diamond Medal	1925	#8 LF in Woodgrain. GFT. "S" emblem mounted onto the cap crown. Signed "Diamond Medal 14K 8" nib (medium/fine). Near mint+.	\$250
210	Kaweco	1938	Elite 583 PIF in Black. GFT. Visualated barrel. Medium nib. New-old-stock, mint. Student pen.	\$100
211	Leboeuf	1929	#4 Full-Sleeve Aerometric-fill in Golden Pearltx. GFT. Medium/fine, extra-flexible nib. Near mint.	\$600
212	Leboeuf	1929	Twist-activated pencil for above set.	Set
213	Leboeuf	1929	#2 Half-sleeve Aerometric-fill in Lavender Pearltx. GFT. Med/fine, flexible nib. Near mint.	\$400
214	Leboeuf	1932	Doctor/Nurse Thermometer Holder in Ivory Pearl. GFT. Cap engraved "Mary M. Matuley." Near mint.	\$350





215	Mabie Todd	1927	Swan L205B/52 Leverless (twist-fill) in Lapis (Blue on Blue). GFT. Set off nicely with knurled black ends. Broad, right-oblique nib. Near mint.	\$300
216	Mabie Todd	1928	#2 LF thin model in smooth Black Hard Rubber. GFT. Near mint pen, with a wonderful broad, extra-flexible nib.	\$125
217	MacNiven & Cameron	1912	<b>Unusual filling mechanism!</b> Model 55 Aerometric Bulb-fill in Black Chased Hard Rubber. The blind cap unscrews to reveal a bladder nested between two pieces of metal which are squeezed to depress the bladder. Section marked "Banker's Nib." Medium nib with a tad of flex. Near mint.	\$175
218	Montblanc	1935	4PL BF in Platinum (perhaps Montblanc's most beautiful celluloid). NPT Made for the Italian market, with the cap imprinted "Mont /\ \ Blanc Fabricatta in Italia." Correct with no barrel imprint and no star on top. Fine nib, with a touch of flex. Some wear to the second line of the cap imprint, otherwise near mint.	\$1650
219	Montblanc	1980	149 PIF in Black. GPT. Medium nib. Early model, from when the feeds were still hard rubber instead of injection molded plastic. Near mint.	\$500
220	Omas	1939	Lucens Medium plunger-fill in Silver Pearl Marbled (rare color). NPT. Roller-ball clip. This model came in three sizes; this is the middle size. Fine, extra-flexible nib. Near mint+	\$1750
221	Parker	1927	Duofold Jr. BF in Lapis. GFT. Beautiful color. Medium nib. Near mint+	\$350
222	Parker	1927	Duofold Sr. BF in Mandarin Yellow. GFT. Beautiful condition! Medium/fine nib. Near mint.	\$1500
223	Parker	1929	Duofold Sr. BF in Jade. GFT. Medium "Duofold" nib with later "comb" feed. A small band of ambering at the very top of the cap, otherwise near mint+.	\$600
224	Parker	1929	Duofold Sr. LF in Jade. GFT. Medium nib. Barrel a little darker than the cap, otherwise near mint. No bladder. I'll fit a silicon bladder on request.	\$300
225	Parker/ Torelli	2009	"51" Vacumatic-fill in Black with White Ribbon made by this master penmaker. Original Parker Sterling Silver cap which Torelli has "Hand Hammered." Near mint+ Medium/fine nib.	\$800





	Parker Vacumatics			
226	Parker	1935	Vacumatic Standard Set in Silver Laminated. NPT. Highly visualated barrel. Two-toned, medium nib. Near mint+	\$300
227	Parker	1935	Twist-activated pencil for above set.	Set
228	Parker	1936	Vacumatic Standard 3-piece Doctor's Set in Silver Laminated. Very nice barrel visualation. NPT. One tone, medium, nib. Near mint+	\$850
229	Parker	1936	Twist-activated pencil for above set.	Set
230	Parker	1936	Thermometer and holder for above set.	Set
231	Parker	1937	Vacumatic Sr. Maxima in Golden Laminated. GFT. Aluminum "Speedline" filler. Double jeweled. One-tone nib. Rare "Star" clip! Just a tad of imprint wear (fully readable) and clip brassing. Medium/fine nib. Excellent+.	\$350
232	Parker	1940	Vacumatic Debutante in Silver Laminated. NPT. Medium/fine nib. Visualated barrel. Double-jeweled. Barrel imprinted "Rose M. Schofiller." Near mint.	\$125
233	Parker	1940	Slender Maxima Vacumatic in Blue Laminated. GFT. Double jeweled model. "Deluxe" model manufactured for jewelry stores, with a wide fully horizontally chased cap band. This allowed jewelry stores to have a special model not carried by the pen shop down the street. Fine nib. Near mint+ (Could be new-old-stock). Very rare!	\$600
234	Parker	1940	Vacumatic Sr. Maxima in Silver Laminated. NPT. Double-jeweled. 2-toned, medium/fine nib. Visualated barrel. Near mint.	\$450
235	Parker	1937	Vacumatic Sr. Pencil in Silver Laminated. Twist-activated. NPT. Near mint. [Buy with pen above at \$500.]	\$100





236	Parker	1941	Vacumatic Junior in Silver Laminated. NPT. Medium/fine nib. Highly visualated barrel. No date code - not worn off - never had one. Near mint. [Buy with pencil below at \$125]	\$100
237	Parker	1941	Twist-activated pencil in Silver Laminated. NPT. Near mint. [Buy with pen above @ \$125]	\$40
238	Parker	1941	Vacumatic Sr. Maxima in Silver Laminated. NPT. Double-jeweled. 2-toned, fine, extra-flexible nib. Flexible Vacumatic nibs are very rare, and this one was even made in the USA!. Highly visualated barrel. Near mint.	\$500
239	Parker	1942	Vacumatic Debutante set in Black Laminated. GFT. Wonderful barrel transparency. Extra-fine nib. Near mint.	\$200
240	Parker	1942	Cap-activated repeater pencil for above set.	Set
241	Parker	1943	Vacumatic Debutante in Golden Laminated. It's rare to find a 1943 Parker, as most plant production capacity was reserved for war materials and very few pens were being made. This pen most probably originally was ordered by the War Department or went to a military PX. GFT. 2-tone, medium nib. Very nice barrel transparency. Near mint.	\$100
242	Parker	1944 45-46	Vacumatic Major in Golden Laminated. GFT. Visualated barrel. Near mint. [Four available: (1) fine nib 1945; (1) medium/fine 1944; (1) medium nib 1946; (1) broad nib 1945 @ \$150]	\$125
243	Parker	1945	Vacumatic Junior in Blue Laminated. Canadian manufacture. GFT. A few minor surface scratches here and there noticeable with a loop, but more than made up for with it's rare medium/fine FLEXIBLE nib!. Excellent+	\$100
244	Parker	1946	Vacumatic Major in Blue Laminated. GFT. Visualated barrel. Near mint. [Two available: (1) fine nib 1946; (1) medium nib 1945]	\$150
245	Parker	1947	Vacumatic Sub-Debutante in Golden Laminated. GFT. Extra-fine nib. Very nice barrel transparency. Near mint.	\$90





246	Paul E. Wirt	1900	4-size Taper-cap eyedropper-fill in Black Hard Rubber. Sports a wonderful gold-filled barrel overlay in high relief depicting a horse's head with a young girl adoringly holding its bridal. Medium, extra-flexible nib. Near mint.	\$500
247	Paul E. Wirt	1900	#2 fully covered Taper-cap eyedropper-fill in heavy repousse "Chases" (snail) pattern on Black Hard Rubber. Medium, extra-flexible nib, with a tad of flex. One dent near the bottom of the indicia, otherwise near mint+.	\$450
248	Sheaffer	1959	PFM III Snorkel-fill Set in Blue. GFT. Fine nib. Has been filled, otherwise near mint	\$400
249	Sheaffer	1959	Twist-activated pencil for above set.	Set
250	Sheaffer	1959	PFM III Snorkel-fill in Green. GFT. Medium/broad "Ball" nib (good for both left and right handed writers). Near mint. Twist-activated pencil for above set.	\$250
251	Soennecken	1933	Rheingold No. 913 BF in Green Marble (very rare!). GFT. White filler button is revealed by counter-clockwise turning of the protective sleeve at the bottom of the barrel. GFT. Medium nib with a tad of flex. Near mint+.	\$2000
252	Soennecken	1936	Prasident BF in Black. White filler button is revealed by counter-clockwise turning of the sleeve at the bottom of the barrel. GFT. Stub, oblique nib! Visualated barrel. New-old-stock. Mint.	\$800
253	Soennecken	1949	510 PIF in Black. GFT. Visualated barrel. Medium nib. A handsome pen, with it's 3 raised rounded cap bands and matching GF clip! Medium, alloy nib. Near mint.	\$225
254	Soennecken	1952	103 PIF in Silver Pearl with Black pinstriping. GFT. Visualated barrel. Medium nib. Near mint.	\$250
255	Soennecken	1952	222 Superior in Black. GFT. Has the famous "click locking" turning knob. Visualated barrel. Extra-smooth, fine nib. Near mint.	\$450
256	Soennecken	1960	222 Superior in Black with Silver Hash Marks. GFT. Broad, right-oblique nib (shaped like the left foot). Visualated barrel. Late production, no longer with the click-locking turning knob. New-old-stock. Mint. [Two available: (1) broad, right-oblique nib (shaped like left foot); (1) double-broad, oblique, italic nib].	\$550



Blind Caps removed to  
Show Ink Tablet Storage



257	Pelikan	1937	100N PIF in Grey Marble (rare). GFT. Amber color celluloid barrel. Medium nib, with a touch of flex. Near mint.	\$425
258	Sager/Grap homatic	1944	<b>Unusual filling mechanism!</b> "Inkmaker" in Khaki, with Demonstrator shell. Makes its own ink, using "ink batteries" and water. Hooded, medium/fine nib. New-old-stock. Cap band may be Sterling Silver. Near mint+ with a red "ink battery" included.	\$90
259	Water Pen Co (NY)	1928	<b>Unusual filling mechanism!</b> #4 LF in Black. Note the brass barrel bottom. This part unscrews, revealing a plastic cylinder holding ink tubes which look like thick pencil lead. These dissolve when the pen is filled with water. Moderate quality, but uncommon. Fine/flexible nib. Excellent++	\$150
260	Waterman	1910	44 Safety eyedropper-fill in Black Chased Hard Rubber. Nickle-plate clip. Fine/flexible nib. Near mint+, except for one scratch on the barrel indicia.	\$125
261	Waterman	1910	12 ½ V. S. Safety eyedropper-fill in Black Chased Hard Rubber. Medium/fine "Manifold" nib. Near mint+ with red wax still in the model number imprints.	\$100
262	Waterman	1917	42 "Continental Safety" eyedropper-fill in 18K Solid Gold! The cap and barrel each have three raised repousse bands or vines. These are separated by a number of deeply chased bands and a panel of very finely chased horizontal bands. A combination of old world beauty and industrial age design! Adorned with a signed Waterman accommodation clip in gold-filled. Fine, flexible nib. Near mint. Restored	\$1500
263	Waterman	1923	0575 eyedropper-fill in gold-filled filigree on Black Hard Rubber. A rare model – the 7x series is screw cap and eyedropper fill. Strictly a user grade pen, with wear and brassing. But if you would like a good looking pen with a wonderful broad, italic nib, at a fantastic price, this is the one for you!	\$200
264	Waterman	1927	#7 in Red Ripple with "Red" color coded nib and corresponding color band on the cap. "Red" designated a medium, flexible nib. GFT. Near mint.	\$550
265	Waterman	1939	Model 403 (rare) LF in Sterling Silver "Basket-weave" overlay on Black Hard Rubber. Medium, italic nib. Indicia engraved in script "R.O.L." Near mint.	\$600
266	Waterman	1950	Crusader LF in Black with Fully Pinstriped Chrome-plated cap. GPT. Extra-fine nib. Has been filled, otherwise near mint+.	\$110





Vintage Pens - Vintage Ball Pens				
267	Reynolds	1945	"International" aluminum ball pen in dark Purple with ribbed top and ribbed aluminum cap. No ink, and cannot be refilled. A wonderful collectible! Near mint..	\$75
268	Reynolds	1946	"400" aluminum ball pen in "checkerboard chased" aluminum. Black ends. Gold-plated clip. No ink, and cannot be refilled. A wonderful collectible! Near mint.	\$65
269	Reynolds	1946	"Rocket" long aluminum ball pen in Blue. Nickle-plate original accommodation clip. Silver aluminum sliding nib protector. No ink, and cannot be refilled. A wonderful collectible! Near mint. .	\$45
270	Parker	1950	Parkette Hopalong Cassidy Ball Pen in Black. Original refill (dry, of course), but if you want to actually use the pen, it comes with an adapter allowing use of modern parker refills. Excellent+	\$150
271	Wearever	1955	Ball pen in Yellow with blue crown. CPT. The lever moves either left or right to propel the refill, and then back up to repel Fitted with a working refill. Near mint.	\$35
272	Wearever	1955	"Flight" ballpen in Dark Burgundy. The lever protruding from the top moves either left or right to propel the refill. Fitted with a working refill. Near mint.	\$35
273	Eversharp	1957	"Deluxe Reporter" round Ball Pen in Yellow with wide GF band and clip. Push the button to propel, then push the top of the clip to repel. New-old-stock. Mint. Fitted with a working refill. [	\$40
274	Eversharp	1957	"Deluxe Reporter" Triangular Ball Pen in Turquoise with wide GF band and clip. Push the button to propel, then push the top of the clip to repel. New-old-stock. Mint. Fitted with a working refill.	\$40
275	Eversharp	1957	"Deluxe Reporter" round Ball Pen in Baby Blue with wide GF band and clip. Push the button to propel, then push the top of the clip to repel. New-old-stock. Mint. Fitted with a working refill.	\$40
276	Eversharp	1957	"Deluxe Reporter" triangular Ball Pen in Grey with wide GF band and clip. Push the button to propel, then push the top of the clip to repel. New-old-stock. Mint. Fitted with a working refill.	\$40
277	Eversharp	1958	"Fountain Ball" Triangle shaped Ball Pen in Yelow. CPT. Push the button to propel, then push the top of the clip to repel. New-old-stock. Mint. Fitted with a working refill.	\$40
278	Eversharp	1958	"Fountain Ball" Triangle shaped Ball Pen in Blue with wide GF band and clip. Push the button to propel, then push the top of the clip to repel. New-old-stock. Mint. Fitted with a working refill.	\$40
279	Morrison	1969	Ball Pen in Black with Sterling Silver 3-leaf filigree overlay on the cap. Button activated. Fitted with a working refill. Original "Morrison" refills included for historical purposes.	\$65